

Texas Instruments and/or its licensors do not warrant the accuracy or completeness of this specification or any information contained therein. Texas Instruments and/or its licensors do not warrant that this design will meet the specifications, will be suitable for your application or fit for any particular purpose, or will operate in an implementation. Texas Instruments and/or its licensors do not warrant that the design is production worthy. You should completely validate and test your design implementation to confirm the system functionality for your application.

Designed for: Public Release		Mod. Date: 9/18/2013	
Project Title: DRV8816EVM			
Number: DRV8816EVM Rev: A		Sheet Title:	
SVN Rev: Not in version control	Assembly Variant: [No Variations]		Sheet 1 of 1
Drawn By:	File: Hardware.SchDoc		Size: B
Engineer: Nicholas Oborny	Contact: http://www.ti.com/support		http://www.ti.com
		© Texas Instruments 2013	



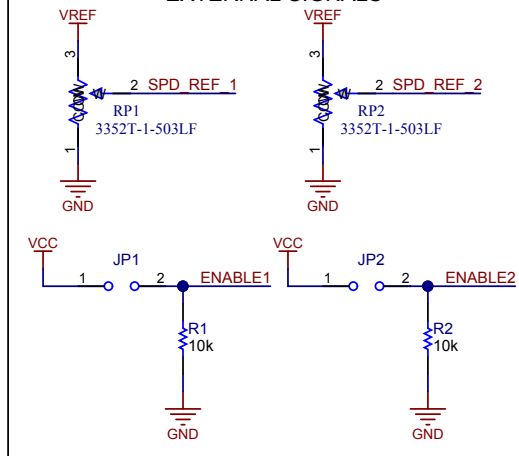
1

2

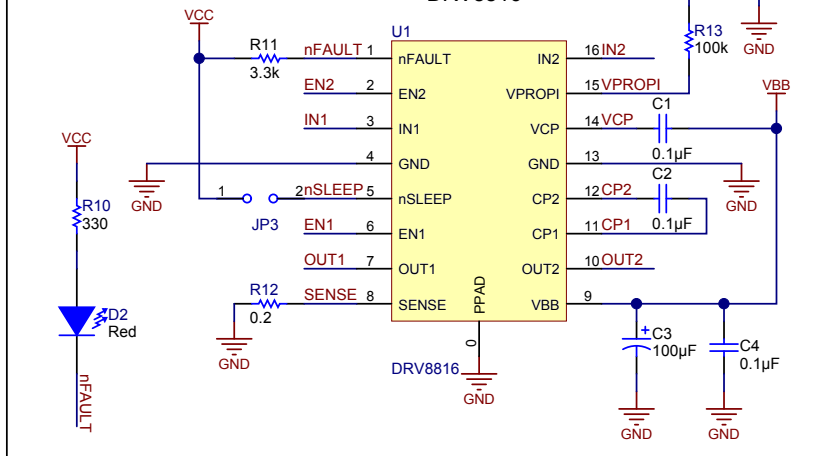
3

4

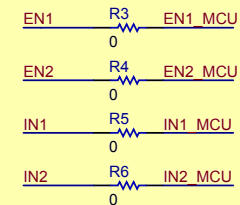
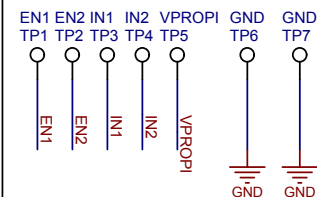
EXTERNAL SIGNALS



DRV8816

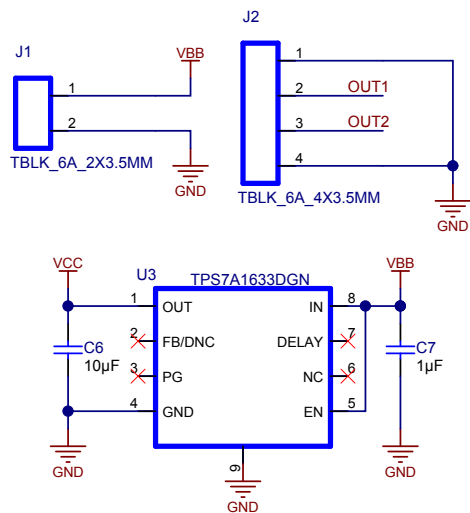


TEST POINTS

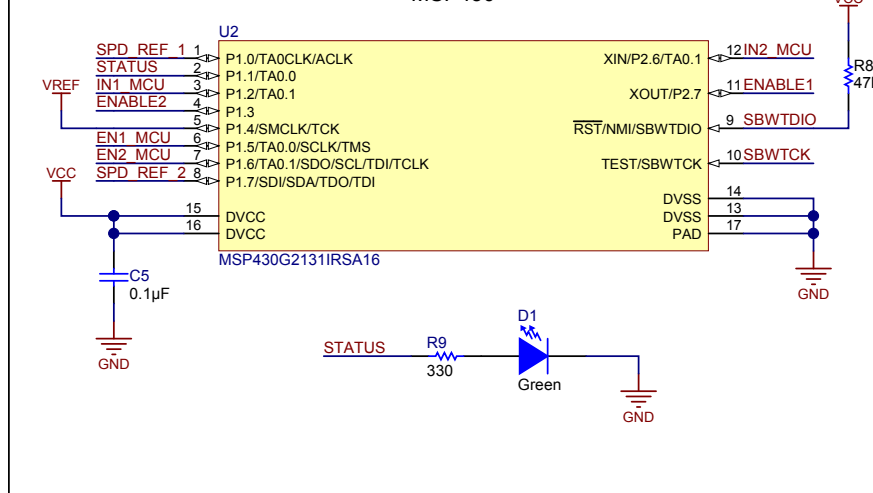


Remove These Resistors To Apply External Signals to Motor Driver

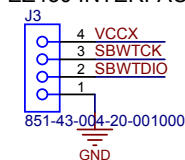
CONNECTIONS/LDO



MSP430



EZ430 INTERFACE



Remove R7 To Debug MSP430 With Motor Supply

Texas Instruments and/or its licensors do not warrant the accuracy or completeness of this specification or any information contained therein. Texas Instruments and/or its licensors do not warrant that this design will meet the specifications, will be suitable for your application or fit for any particular purpose, or will operate in an implementation. Texas Instruments and/or its licensors do not warrant that the design is production worthy. You should completely validate and test your design implementation to confirm the system functionality for your application.

Number: **DRV8816EVM** Rev: **A**
 SVN Rev: Not in version control
 Drawn By:
 Engineer: **Nicholas Oborny**

Designed for: **Public Release**
 Project Title: **DRV8816EVM**
 Sheet Title:
 Assembly Variant: **[No Variations]**
 File: **DRV8816EVM.SchDoc**
 Contact: **http://www.ti.com/support**

Mod. Date: **9/3/2013**
 Sheet: **1 of 1**
 Size: **A4**

TEXAS INSTRUMENTS
<http://www.ti.com>
 © Texas Instruments 2013

1

2

3

4

	1	2	3	4	5	6
A						
B						
C						
D						

Revision History	
Revision	Notes
E0	Draft Revision

Texas Instruments and/or its licensors do not warrant the accuracy or completeness of this specification or any information contained therein. Texas Instruments and/or its licensors do not warrant that this design will meet the specifications, will be suitable for your application or fit for any particular purpose, or will operate in an implementation. Texas Instruments and/or its licensors do not warrant that the design is production worthy. You should completely validate and test your design implementation to confirm the system functionality for your application.

Designed for Public Release		Mod. Date: 6/27/2013
Project Title: DRV8816EVM		
Number: DRV8816EVM Rev: A		Sheet Title:
SVN Rev: Not in version control	Assembly Variant: [No Variations]	Sheet: 1 of 1
Drawn By:	File: Cover Sheet_SchDoc	Size: B
Engineer: Nicholas Oborny	Contact: http://www.ti.com/support	http://www.ti.com
		© Texas Instruments 2013

