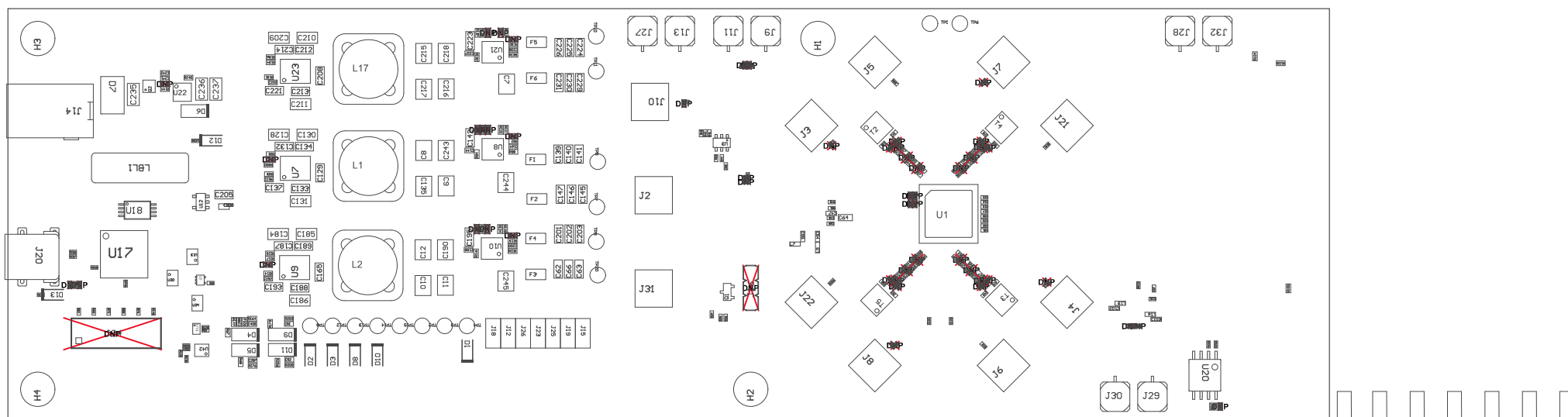


Z21 ■Install label in silkscreened box after final wash. Text shall be 8 pt font. Text shall be per the Label Table in the PDF schematic.

Z22 ■These assemblies are ESD sensitive, ESD precautions shall be observed.

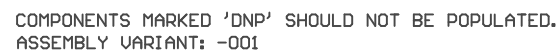
Z24 ■These assemblies must comply with workmanship standards IPC-A-610 Class 2, unless otherwise specified.

Z23 ■These assemblies must be clean and free from flux and all contaminants. Use of no clean flux is not acceptable.



COMPONENTS MARKED 'DNP' SHOULD NOT BE POPULATED.  
ASSEMBLY VARIANT: -001

PCB VIEWED FROM TOP SIDE	BOARD #: DC091	REV: A	SUN REV: Not In VersionControl
PLOT NAME = N/A	GENERATED : 2/4/2020 4:17:25 PM		TEXAS INSTRUMENTS



PCB VIEWED FROM BOTTOM SIDE	BOARD #: DC091	REV: A	SUN REMpt In VersionControl
PLOT NAME = N/A	GENERATED : 2/4/2020 4:17:26 PM	TEXAS INSTRUMENTS	