

Installation Guide For SensorAFE Drivers

The Evaluation Board for the SensorAFE product you have selected requires the use of an interface board for communications with the PC Software. This interface board, the SignalPath IO Board Gen 4 (SPIO4), requires drivers for operation that were included in the SensorAFE download.

As part of the software download, a directory titled NSC_USB_v#. # will have been included (where #.# is the version). Before plugging the SPIO4 into the PC be sure you are aware of the location of this directory.

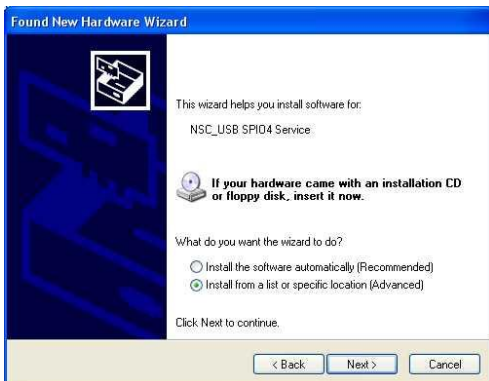
Start by plugging the USB cable from the SPIO4 into an available USB port on the PC.

Your PC should detect the attachment of a new USB device and begin the “Found New Hardware Wizard”.



On the first panel, select the “No, not this time” option because the software drivers have been provided.

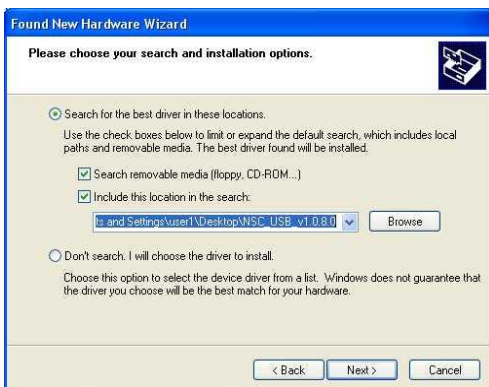
Click [Next>].



The Wizard will identify the board found (NSC_USB SPIO4 Service) and ask to choose between installing automatically or from a specific location.

Choose “Install from a list or specific location (Advanced)”.

Click [Next>].



When asked to choose a location for finding the drivers, you need to provide the location of the downloaded directory.

Select “Include this location in the search.”

Use the [Browse] to select the location for the directory with the drivers.

Click [Next]



The Wizard will now begin installing the drivers from the identified directory for the SPI04 board.

When it completes, click [Next].



You should now see the Completion screen, which identifies the successful installation of software for the NSC_USB SPI04 Service.

Click [Finish].

You may now proceed with the installation of the Sensor AFE software for the Evaluation Board, or simply run the software if it was previously installed.