

# MMWAVE MCUPLUS SDK Release Notes



**Product Release 4.2**

**Release Date: March 28, 2022**

**Release Notes Version: 2.2**

# CONTENTS

---

---

---

- 1. Introduction
  - 2. Release overview
    - 2.1. What is new
    - 2.2. Platform and Device Support
    - 2.3. Component versions
    - 2.4. Tools dependency
    - 2.5. Licensing
  - 3. Release content
    - 3.1. New Features
    - 3.2. Migration notes from Previous SDK versions
    - 3.3. Known Issues
      - 3.3.1. mmWave Suite/Demos Known Issues
      - 3.3.2. Limitations
        - 3.3.2.1. mmWave Suite/Demos Limitations
  - 4. Test reports
  - 5. Installation instructions
    - 5.1. Installation in GUI mode
    - 5.2. Installation in unattended command line mode
    - 5.3. Post Installation
  - 6. Device-Specific Support
  - 7. Package Contents
    - 7.1. Control
    - 7.2. Datapath
    - 7.3. Demos
    - 7.4. Scripts
    - 7.5. Tools
    - 7.6. Docs
  - 8. Related documentation/links
- 



## 1. Introduction

The mmWave mcuplus SDK enables the development of millimeter wave (mmWave) radar applications using TI mmWave sensors (see [list of supported Platform/Devices](#)). The SDK provides foundational components which will facilitate end users to focus on their applications. In addition, it provides few demo applications which will serve as a guide for integrating the SDK into end-user mmWave application. See what SDK components are supported by each device in the [Device-Specific Support](#) section.

Key mmWave SDK features:

- Building blocks
  - Layered approach to programming analog front end
- Demonstrations and examples
  - FreeRTOS based
  - Out of box demo with easy configurability via TI cloud based GUI
  - Representation of "point cloud" and benchmarking data from demo via GUI
  - Profiles tuned to common end user scenarios such as Range, Range resolution, Velocity, Velocity resolution.
- Documentation

mmWave SDK works along with the following external tools:

- Host tools including Pin Mux, Flashing utilities
- Code Composer Studio™ IDE for RTOS development



**NOTICE:** This software product is used to configure TI's mmWave devices, including RF emissions parameters for such devices. Note that many countries or regions impose regulations governing RF emissions. Users are responsible for understanding local RF emission regulations and operating the product within those regulations.

## 2. Release overview

### 2.1. What is new

- Support for devices mentioned in the [Platform and Device Support](#) section
- See what SDK components are supported by each device in the [Device-Specific Support](#) section
- New features can be found in [New Features](#) section.
- Tools update

### 2.2. Platform and Device Support

The devices and platforms supported with this release include:

Supported Devices	Supported EVM
AM273X ES1.0	AM273X EVM
AWR2243 ES1.1	AWR2243BOOST
AWR294X ES1.0	AWR294X EVM



**Silicon versions other than the ones in the table above are not supported**



This release of mmWave mcuplus SDK supports the foundation components for the devices mentioned in the table above. At system level, the mmWave SOC/EVM may interface with other TI ecosystem SOCs/Launchpads/EVMs and software for these other devices will not be a part of the mmWave mcuplus SDK foundation components.

### 2.3. Component versions

Components inside mmwave\_mcuplus\_sdk that have their own versions are shown below.

Component	Version	Type	Comment
mmwave sdk	4.2	Source and Binary	Overall package release version

### 2.4. Tools dependency

For building and using mmwave sdk the following tool versions are needed.



Tool	Version	Download link
CCS	11.0 or later	<a href="#">download link</a> (Contact TI Representative for latest version)
MCU PLUS SDK (AM273X)	08.02.00.26	Included in mmwave mcuplus sdk installer
MCU PLUS SDK (AWR294X)	08.02.00.25	Included in mmwave mcuplus sdk installer
SYSCONFIG	1.11.0	Included in mmwave mcuplus sdk installer
TI ARM CLANG	1.3.0.LTS	Installed with CCS11.0 installer
TI CGT compiler	8.3.11	Installed with CCS11.0 installer
XDC	3.62.01.16	Installed with CCS11.0 installer
C66x DSPLIB	3.4.0.0	Included in mmwave mcuplus sdk installer
C66x MATHLIB (little-endian, elf/coff format)	3.1.2.1	Included in mmwave mcuplus sdk installer
mmWave Device Firmware Package (DFP - AWR2243 ES1.1)	02.02.03.01	Included in mmwave mcuplus sdk installer (includes RSS firmware and mmwavelink library)
mmWave Device Firmware Package (DFP - AWR294X ES1.0)	02.04.03.01	Included in mmwave mcuplus sdk installer (includes RSS firmware and mmwavelink library)
OpenSSL (optional)	1.1.1 or above	Needed for signing secondary bootloader image, required only if you want to build the SBL dependency images from scratch
TI Emulators package	Latest	Upgrade to the latest using CCS update process (Contact TI Representative for latest version)
Pinmux tool (optional)	Latest	Contact TI Representative for latest tool
Doxygen (optional)	1.8.11	Only needed if regenerating doxygen docs
Graphviz (optional)	2.36.0 (20140111.2315)	Only needed if regenerating doxygen docs

The following tools are needed at runtime

Runtime tool	Version	Link
mmWave Demo Visualizer	Latest	TI Gallery APP for configuring mmWave sensors and visualizing the point cloud objects generated by the mmWave SDK demo  <a href="https://dev.ti.com/gallery/view/mmwave/mmWave_Demo_Visualizer/ver/4.2.0/">https://dev.ti.com/gallery/view/mmwave/mmWave_Demo_Visualizer/ver/4.2.0/</a>

## 2.5. Licensing

Please refer to the [mmwave\\_mcuplus\\_sdk\\_software\\_manifest.html](#), which outlines the licensing status for mmwave\_mcuplus\_sdk package.

## 3. Release content

### 3.1. New Features

- Provided new CLI command to enable 2-lane/4-lane LVDS streaming for AM273x Demo.
- SDK integrated with MCU PLUS SDK updated with ethernet optimization.
- Below captured bug fixes:
  - MMWSDK-2564: Corrected TCMA, TCMB RAM sizes in linker files
  - MMWSDK-2604: Cascade application reports debug assert failure after completion of execution
  - MMWSDK-2600: CCS install path is broken in linux environment for different version
  - MMWSDK-2590: DDMA detects positive velocities above a limit incorrectly
  - MMWSDK-2569: AoA estimation in DDMA chain is not as represented in doxygen
  - MMWSDK-2608: Diagrams update to DPU rangeProcDDMA document
  - MCUSDK-2183: Ethernet Streaming OOB application is not stable. Instability of the OOB is seen when ethernet streaming is enabled.
  - MCUSDK-2037: 2chip Cascade control application: mmwaveclose API doesn't end the SPI communication with Frontend.
  - MMWSDK-2580: Demo visualizer "send config to Device" doesn't work for AM273x

### 3.2. Migration notes from Previous SDK versions



This section describes the changes that are relevant for users migrating to the mmWave mcuplus SDK 4.2.0 release from previous release.

Summary	Component (s)	Sub-component (s)	Affects SoC	Behavior of impact
numLvdsLanesCfg	OOB	Source files	AM273X	numLvdsLanesCfg CLI command accepts one argument to configure number of LVDS lanes.  <numLvdsLanes> 3 - Enables 2-Lanes for Streaming Raw ADC Data 15 - Enable 4-Lanes for Streaming Raw ADC Data

### 3.3. Known Issues

#### 3.3.1. mmWave Suite/Demos Known Issues

For issues related to DDMA processing chain please refer DDMA documentation in [mmwave\\_sdk\\_<ver>/docs/mmwave\\_sdk\\_module\\_documentation.html](#).

The following issues are known at the time of this release.

Issue Type	Key	Summary	Comments
Bug	MMWSDK-2473	Static clutter removal command in the GUI Visualizer does not work as expected	
Bug	MMWSDK-2474	Max range/resolution selection in the Visualizer might not give the same in the plots	
Bug	MMWSDK-2475	minmaxFlag in aoaprocs test case is not enabled for AWR294X	The same functionality has been tested in the objectdetection test case
Bug	MMWSDK-2560	sensorStart does not work immediately after issuing sensorStop	Workaround: The profile can be loaded again from the "Load Config from PC and Send" button of the visualizer without having to restart the demo.
Bug	MMWSDK-2587	OOB demo doesn't support Advance Frame Configuration	
		IPC communication between the MCAL CDD IPC (R5F) and MCU+SDK IPC (DSP) does not work due to the differences IPC messaging.	PDK uses mailbox driver which is compatible with MCAL CDD IPC.  As part of the migration to MCU Plus SDK mailbox driver is merged to IPC driver which is not compatible with MCAL CDD IPC driver.

### 3.3.2. Limitations

#### 3.3.2.1. mmWave Suite/Demos Limitations

Some of these limitations are captured in the "known issues" list shown in previous section.

1	Limited test cases are provide for DDMA libraries
2	Ethernet Streaming for DDM demo is not available.
3	CQ Data streaming for AWR294x is not tested as the OOB doesn't support continuous mode.

## 4. Test reports

Results of the unit tests can be found in the mmwave\_mcuplus\_sdk\_<ver>/ti/docs/testlogs folder.

## 5. Installation instructions

mmwave\_sdk installer is available as a Windows Installer and a Linux installer.

- mmwave\_mcu\_plus\_sdk\_<version>-Windows-x86-Install.exe: Windows installer verified on Windows 10 machines
- mmwave\_mcu\_plus\_sdk\_<version>-Linux-x86-Install.bin: Linux installer verified on Ubuntu 18.04 64 bit machines.

### 5.1. Installation in GUI mode

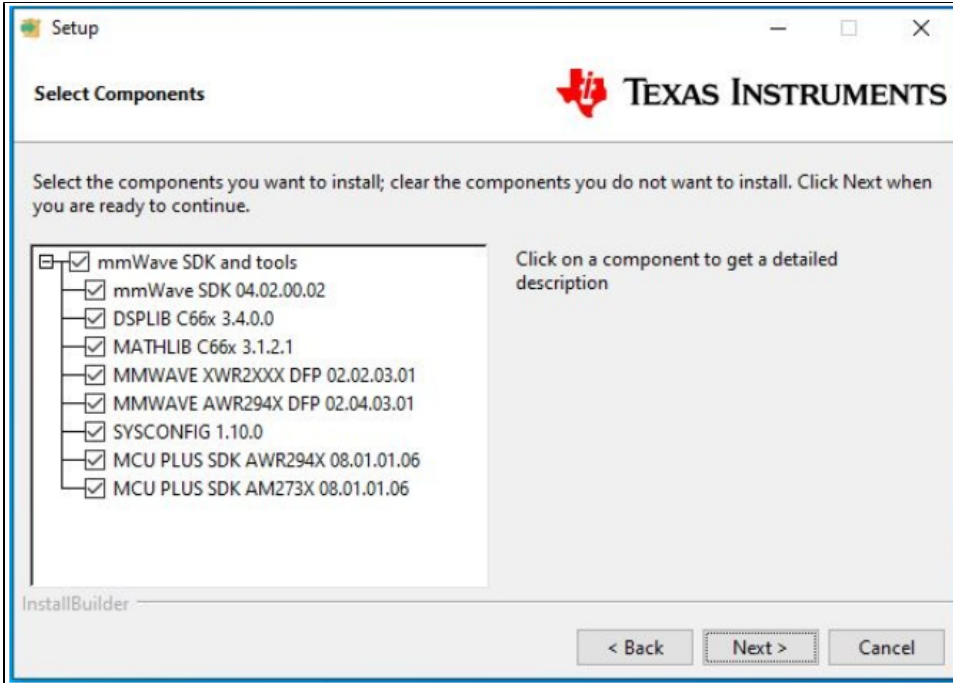
Depending on your development environment run the appropriate installer



- In Windows environment, double clicking the Windows installer from Windows explorer should start the installation process
- If in Linux environment,
  - On 64-bit machines: Since mmwave\_mcu\_plus\_sdk\_<version>-Linux-x86-Install.bin is a 32-bit executable, install modules that allows Linux 32bit binaries to execute: "sudo dpkg --add-architecture i386"
  - Enable execute permission for the Linux installer by running "chmod +x mmwave\_mcu\_plus\_sdk\_<version>-Linux-x86-Install.bin" command
  - Run the installer using "./mmwave\_mcu\_plus\_sdk\_<version>-Linux-x86-Install.bin" command
  - On 64-bit machines if the GUI does not show up you may need to install additional packages: "sudo apt-get install libc6:i386 libgtk2.0-0:i386 libxst6:i386"

Installation steps:

- Setup
- Choose Destination Location: Select the folder to install (default is c:\ti\mmwave\_mcu\_plus\_sdk\_<version> on windows and ~/ti/mmwave\_mcu\_plus\_sdk\_<version> on linux). **The installation folder selected should not have spaces in its full path.**
- Select Components: The installer includes all the tools needed for building the mmWave SDK. You should see a screen like below (except that each component will also have version information appended). The only reason to deselect a tool is if the exact tool version is already installed in the destination folder.



- Review installation decisions
- Ready to install
- Once installation starts all the selected components will be installed (if a component with the same version exists in the destination folder it will be overwritten)
- Installation complete

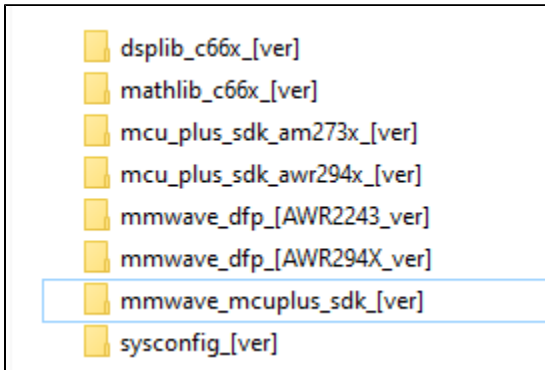
## 5.2. Installation in unattended command line mode

The installers can be run in command line mode without user intervention

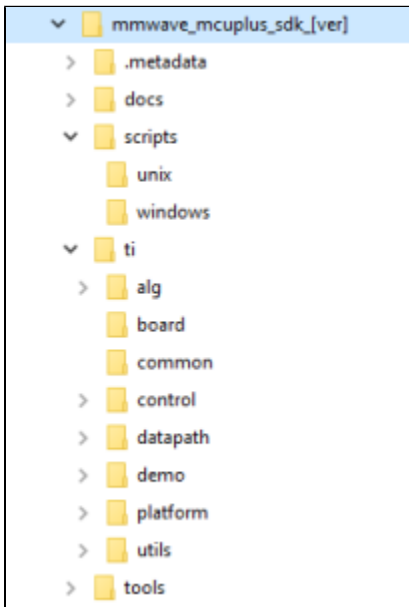
- In Windows environment
  - Run the installer using "mmwave\_mcuplus\_sdk\_<version>-Windows-x86-Install.exe --prefix <installation folder> --mode unattended" command. This will install all the components in the installer.
    - Please note that even though the command may finish immediately it takes sometime for all the folders to show up in the destination folder (double check if you have the folder structure in "Post Installation" section before proceeding)
    - For command line help including information about selective installation of components run the following command "mmwave\_mcu\_plus\_sdk\_<version>-Windows-x86-Install.exe --help"
- In Linux environment:
  - On 64-bit machines: Since mmwave\_mcuplus\_sdk\_<version>-Linux-x86-Install.bin is a 32-bit executable, install modules that allows Linux 32bit binaries to execute: "sudo dpkg --add-architecture i386"
  - Enable execute permission for the Linux installer by running "chmod +x mmwave\_mcuplus\_sdk\_<version>-Linux-x86-Install.bin" command
  - Run the installer using "./mmwave\_mcuplus\_sdk\_<version>-Linux-x86-Install.bin --prefix <installation folder> --mode unattended" command. This will install all the components in the installer.
    - For command line help including information about selective installation of components run the following command ". /mmwave\_mcuplus\_sdk\_<version>-Linux-x86-Install.bin --help"

## 5.3. Post Installation

After the installation is complete the following folder structure is expected in the installation folder (except that each component will have appropriate version number in place of the VERSION placeholder shown below)



Under the mmwave\_mcuplus\_sdk <ver> folder you should have the following directory structure.



## 6. Device-Specific Support

The current release of mmwave SDK contains support for the following components

Component		AM273X EVM + AWR2243BOOST	AWR294X EVM
Control	Datapath Manager (dpm)	X	X
	mmwave High Level API (mmwave)	X	X
Datapath	RangeProc DPU	X	X
	RangeProc DDMA DPU	X (C66 Only)	X (C66 Only)
	Doppler DPU	X	X
	Doppler DDMA DPU	X (C66 Only)	X (C66 Only)
	CFAR DPU	X	X
	RangeCFARProc DDMA DPU	X (C66 Only)	X (C66 Only)
	AoA DPU	X	X

	Datapath EDMA	X	X
	Object Detection DPC	X	X
	Object Detection DDMA DPC	X (C66 Only)	X (C66 Only)
Alg	mmwavelib	X	X
	Group Tracking (gtrack)	X	X
Utilities	Command Line Interface (CLI)	X	X
	CBUFF Streaming + HSI header		X
	Mailbox driver test		X
	MSS VMON self-test		X
	Math Utilities (mathutils)	X	X
	Test Logger (testlogger)	X	X
	CCS Debug Utility (ccsdebug)	X	X
Tools	Binaries for appimage flashing	X	X
Demo	OOB Demo TDM	X	X
	OOB Demo DDM	X	X
	Ethernet-based streaming DDM		
	Ethernet-based streaming TDM	X	X
	LVDS streaming	X	X

## 7. Package Contents

The mmwave mcuplus sdk release package contains the following major components/folders.

### 7.1. Control

Control modules can be found under mmwave\_mcuplus\_sdk\_<ver>/ti/control folder. Content of each of the control module is shown below

Component	Source & Prebuilt Library	API Document (doxygen)	Unittest (source & prebuilt binary)
datapath manager (dpm)	X	X	X
mmwave high level api	X	X	X

### 7.2. Datapath

Datapath modules can be found under mmwave\_mcuplus\_sdk\_<ver>/ti/datapath folder. Content of each of the control module is shown below

Component	Source & Prebuilt Library	API Document (doxygen)	Unittest (source & prebuilt binary)
RangeProc DPU	X	X	X
RangeProc DDMA DPU	X (C66 Only)	X	X (C66 Only)
Doppler DPU	X	X	X





Doppler DDMA DPU	X (C66 Only)	X	X (C66 Only)
CFAR DPU	X	X	X
RangeFarProc DDMA DPU	X (C66 Only)	X	
AoA DPU	X	X	X
Datapath EDMA	X	X	
Object Detection DPC <sup>1</sup>	X	X	X
Object Detection DDMA DPC <sup>1</sup>	X (C66 Only)	X	

<sup>1</sup> No pre-built library for Object Detection DPC

### 7.3. Demos

Demos can be found under `mmwave_mcuplus_sdk_<ver>/ti/demo/<platform>`. The following demos are included in the mmwave sdk package. Details on running demos can be found in the `mmwave_mcuplus_sdk_user_guide`.

Component	Source & Prebuilt Binary	Demo document (doxygen)	Demo GUI
mmw	X	X	X

### Misc folders

Following folders are also part of `mmwave_mcuplus_sdk_<ver>/ti` folder.

- `common`: Common header files needed across all components
- `platform`: platform specific files
- `utility`: Contains
  - `cli` which is the cli helper utility used by the demos
  - `mathutils` is used to perform some common operations such as log2, rounding, saturation based on the core they need to run on (R5F, C66x)
  - `testlogger` which is the helper utility for driver unit tests
  - `ccsdebug` which is a utility that can be flashed on QSPI, and will loop forever. Meanwhile, CCS can be attached and developers can download the application which needs to be debugged
  - `test` contains below utilities :
    - `cbuff_stream` application streams raw ADC data over LVDS interface (applicable for only AWR294X SOC)
    - `mailbox driver test` application issues version command to BSS (applicable for only AWR294X SOC)
    - `MSS VMON self-test` application preforms voltage monitor self-tests and verifies the ESM interrupt
    - `Cascade` application communicates with two AWR2243 front ends (Application for only AM273x SOC and should only be tested on 2-chip Cascade EVM)

### 7.4. Scripts

Build scripts can be found in `mmwave_mcuplus_sdk_<ver>/scripts` folder. Build instructions can be found in `mmwave_mcuplus_sdk_user_guide`.

### 7.5. Tools

Dependencies needed for a successful flashing of binary images are located in `mmwave_mcuplus_sdk_<ver>/tools`. The User Guide details the steps for flashing the metaimages.

### 7.6. Docs

`mmwave_mcuplus_sdk_<ver>/docs` folder contains important documents related to the release such as

- `mmwave_mcuplus_sdk_software_manifest.html`: Software Manifest
- `mmwave_mcuplus_sdk_release_notes.pdf`: Release Notes (this document)
- `mmwave_mcuplus_sdk_user_guide.pdf`: User guide
- `mmwave_sdk_module_documentation.html`: Links to individual module's documentation
- `testlogs`: Unit test logs for mmWave SDK unit tests

`mmwave_mcuplus_sdk_<ver>/docs/testlogs` folder contains test results for each components in the package.



## 8. Related documentation/links

Other than the documents included in the mmwave\_sdk package the following documents/links are important references.

- SoC links:
  - [Automotive mmWave Sensors](#)
  - [Industrial mmWave Sensors](#)
- Evaluation Modules (EVM) links:
  - [Automotive Evaluation modules](#) (Booster Pack, DEVPACK)
  - [Industrial Evaluation modules](#) (Booster Pack, ISK)

