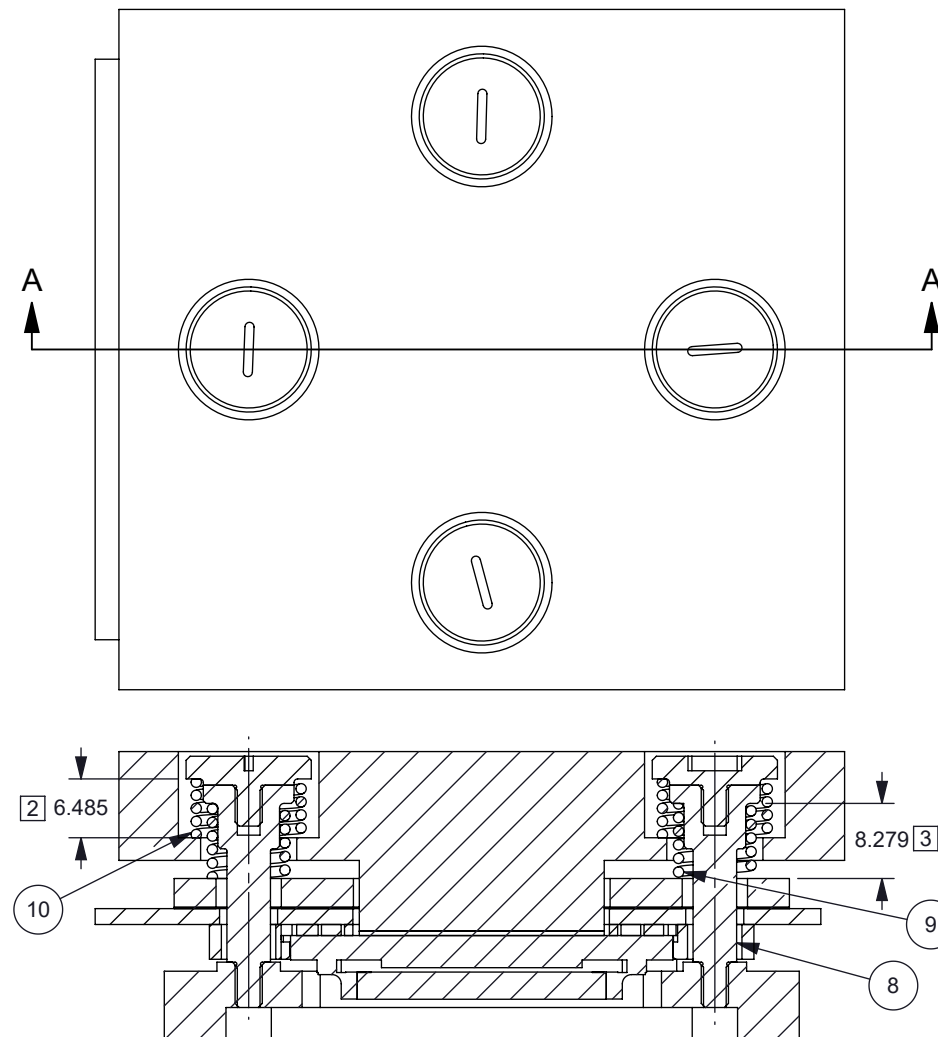
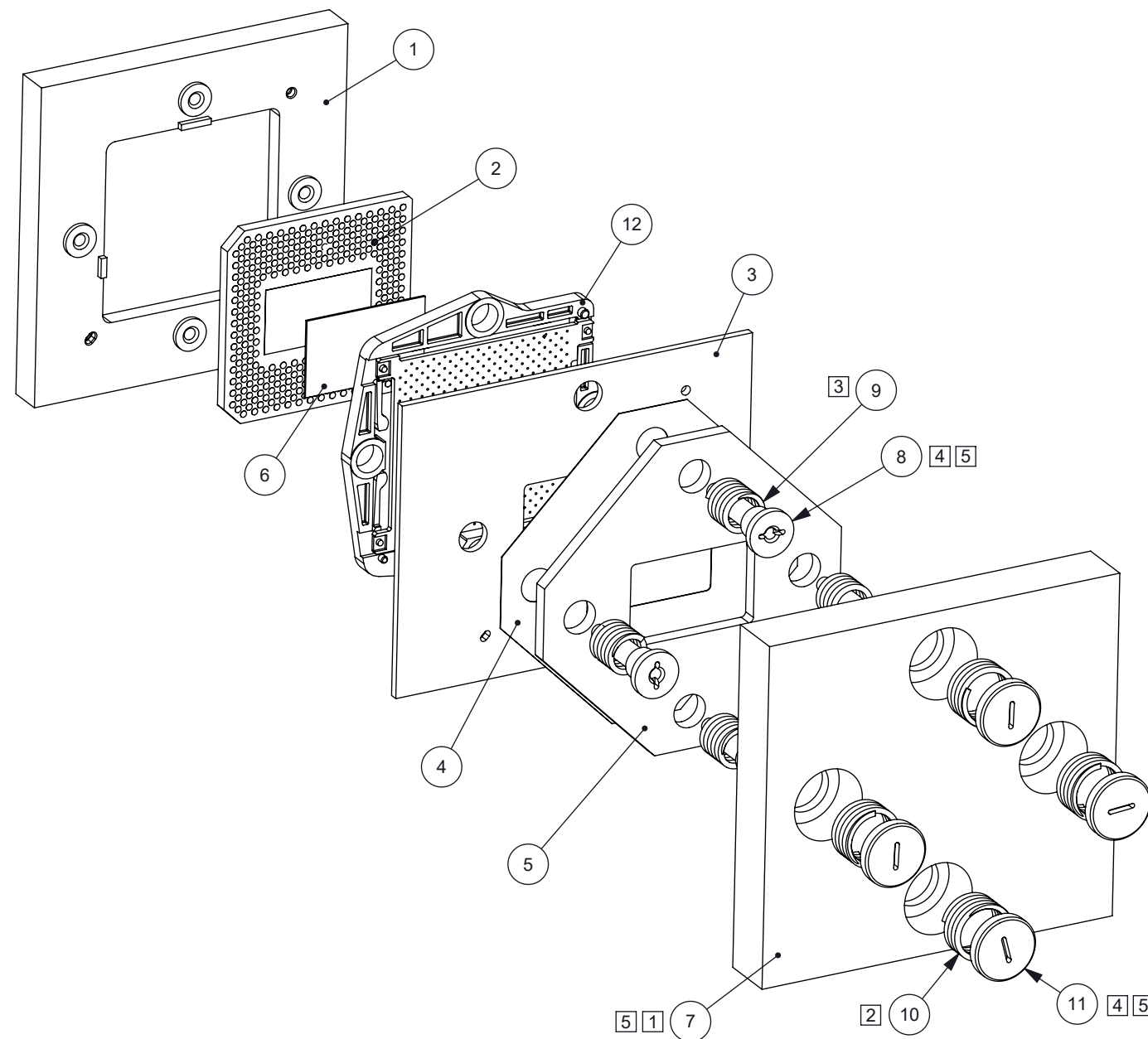



- 1 ITEM 7 ILLUSTRATES THE MOUNTING FEATURES FOR A HEAT EXCHANGER THAT COOLS THE DMD. THE FINS AND HEAT EXCHANGER COOLING FEATURES AND SIZE NEED TO BE DESIGNED AS PART OF THE SYSTEM LEVEL COOLING SOLUTION TO ENSURE THE DMD SPECIFICATIONS ARE MAINTAINED AT ALL TIMES
- 2 CRITICAL GAP FOR COIL SPRING DESIGN TO CONTROL LOADS ON THE DMD THERMAL INTERFACE AREA. THE SIZE OF THE GAP WILL VARY DEPENDING ON PART TOLERANCES AND SPRING PROPERTIES. GAP SIZE SHOULD BE EVALUATED FURTHER IF NOMINAL SIZE OF GAP, TOLERANCES OF THE PARTS, OR SPRING PROPERTIES CHANGE TO ENSURE MOUNTING LOADS ON THE DMD ARE WITHIN SPECIFICATIONS.
- 3 CRITICAL GAP FOR COIL SPRING DESIGN TO CONTROL LOADS ON THE DMD ELECTRICAL INTERFACE AREA. THE SIZE OF THE GAP WILL VARY DEPENDING ON PART TOLERANCES AND SPRING PROPERTIES. GAP SIZE SHOULD BE EVALUATED FURTHER IF NOMINAL SIZE OF GAP, TOLERANCES OF THE PARTS, OR SPRING PROPERTIES CHANGE TO ENSURE MOUNTING LOADS ON THE DMD ARE WITHIN SPECIFICATIONS.
- 4 WHEN TIGHTENING SCREWS (ITEMS 8 AND 11) ENSURE CLAMPING FORCES ARE UNIFORMLY APPLIED TO THE DMD. TO PREVENT NON-UNIFORM FORCES BEING APPLIED TO THE DMD AND TILTING OF THE DMD DURING ASSEMBLY IT IS RECOMMENDED A FIXTURE BE USED TO CLAMP THE PARTS TOGETHER WHILE THE SCREWS ARE TIGHTENED, OR TORQUE SEQUENCE AND PARTIAL TIGHTENING OF THE SCREWS (MULTIPLE TIMES) BE DONE.
- 5 DESIGN ALLOWS FOR ELECTRICAL CONNECTION TO BE SECURED BEFORE AND INDEPENDANT OF HEAT EXCHANGER ATTACHMENT.



SECTION A-A

1	12	2515700	INTERPOSER, 305 POSITION	
4	11	2517976	SCREW, SHOULDER, CAP	
4	10		COIL SPRING (LEE MS24585-355)	
4	9		COIL SPRING (LEE MS24585-1272)	
4	8	2517999	SCREW, SHOULDER, BASE	
1	7	2517998	HEAT EXCHANGER CONCEPT, 305	
1	6	2518002	THERMAL PAD	
1	5	2518000	CLAMP, PCB, .9 TYPE-A DMD 305	
1	4	2518001	INSULATOR, PCB, .9 TYPE-A DMD 305	
1	3	2516867	PCB, 305 PAD .9 TYPE-A DMD	
1	2		DMD, .9 TYPE-A 305	
1	1	2516868	INTERFACE, .9 TYPE-A DMD, 305 SPRING	
QTY	ITEM	PART NUMBER	DESCRIPTION	Notes

		<div>UNLESS OTHERWISE SPECIFIED</div> <ul style="list-style-type: none"><li>DIMENSIONS ARE IN MILLIMETERS</li><li>TOLERANCES: ANGLES <math>\pm 1^\circ</math> 2 PLACE DECIMALS <math>\pm 0.25</math> 1 PLACE DECIMALS <math>\pm 0.50</math></li><li>DIMENSIONAL LIMITS APPLY BEFORE PROCESSES</li><li>INTERPRET DIMENSIONS IN ACCORDANCE WITH ASME Y14.5M-1994</li><li>REMOVE ALL BURRS AND SHARP EDGES</li><li>PARENTHETICAL INFO FOR REF ONLY</li></ul>	DWN J. McKINLEY	DATE 10/9/2023	<div>TEXAS INSTRUMENTS</div> <div>ASSEMBLY, MOUNTING CONCEPT, .98 TYPE-A SST DMD 305</div>			
			Engr					
			CQE/QA					
			CM					
NONE	0314RD				SIZE B		DWG NO 2519049	RE A
NEXT ASSY	USED ON		Apprvd		SCALE 1:5		SHEET 1 OF 2	
APPLICATION								

D

C

B

A

D

C

B

A

**TECHNICAL INFORMATION USAGE**

**BEFORE USING TECHNICAL INFORMATION, THE USER SHOULD CAREFULLY READ THE FOLLOWING TERMS.**

The term "Technical Information" includes reference designs, drawings, specifications, and other information relating to TI DLP(R) products or applications contained herein or provided separately in any format or via any medium.

TI is providing Technical Information for the convenience of purchasers of DLP(R) products ("Users"), and will not accept any responsibility or liability arising from providing the Technical Information or its use. Any use or reliance on Technical Information is strictly the responsibility of the User.

1. **No Warranty.** ***THE TECHNICAL INFORMATION IS PROVIDED "AS IS".*** TI MAKES NO WARRANTIES OR REPRESENTATIONS, EXPRESS, IMPLIED OR STATUTORY, INCLUDING LACK OF VIRUSES, ACCURACY, OR COMPLETENESS. TI DISCLAIMS ANY WARRANTY OF TITLE, ANY IMPLIED WARRANTIES OF MERCHANTABILITY, FITNESS FOR A PARTICULAR PURPOSE, QUIET ENJOYMENT, QUIET POSSESSION, AND NON-INFRINGEMENT OF ANY THIRD PARTY INTELLECTUAL PROPERTY RIGHTS WITH REGARD TO THE TECHNICAL INFORMATION OR THE USE OF THOSE MATERIALS.
2. **Warranty for Products Not Affected.** The foregoing exclusion and disclaimer of warranty does not affect or diminish any warranty rights with regard to DLP(R) products. Such rights are governed exclusively by the terms of a written and signed purchase agreement with TI.
3. **Limitations and Exclusion of Damages.** IN NO EVENT SHALL TI BE LIABLE FOR ANY ACTUAL, SPECIAL, INCIDENTAL, CONSEQUENTIAL OR INDIRECT DAMAGES, HOWEVER CAUSED, ON ANY THEORY OF LIABILITY AND WHETHER OR NOT TI HAS BEEN ADVISED OF THE POSSIBILITY OF SUCH DAMAGES, ARISING IN ANY WAY OUT OF THE TECHNICAL INFORMATION OR THE USE OF THE TECHNICAL INFORMATION.
4. **No Engineering Services.** User is fully responsible for all design decisions and engineering with regard to its products, including decisions relating to application of DLP(R) products. By providing Technical Information TI does not intend to offer or provide engineering services or advice concerning User's design. If User desires engineering services, then User should rely on its retained employees and consultants and/or procure engineering services from a licensed professional engineer ("LPE").
5. **Compliance with Export Control Laws.** Unless prior authorization is obtained from the U.S. Department of Commerce, User may not export, re-export, or release, directly or indirectly, any Technical Information, or export, directly or indirectly, any direct product of such Technical Information to any destination or country to which the export, re-export or release of the Technical Information or direct product is prohibited by the Export Administration Regulations of the U.S. Department of Commerce ("EAR").