

NOTES UNLESS OTHERWISE SPECIFIED:

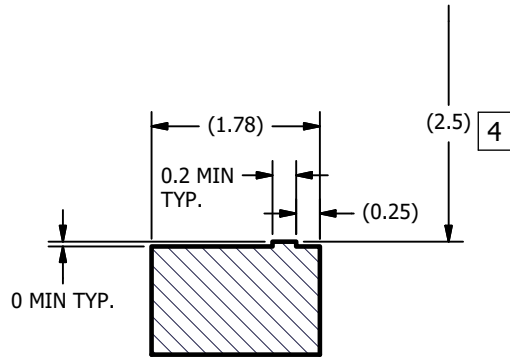
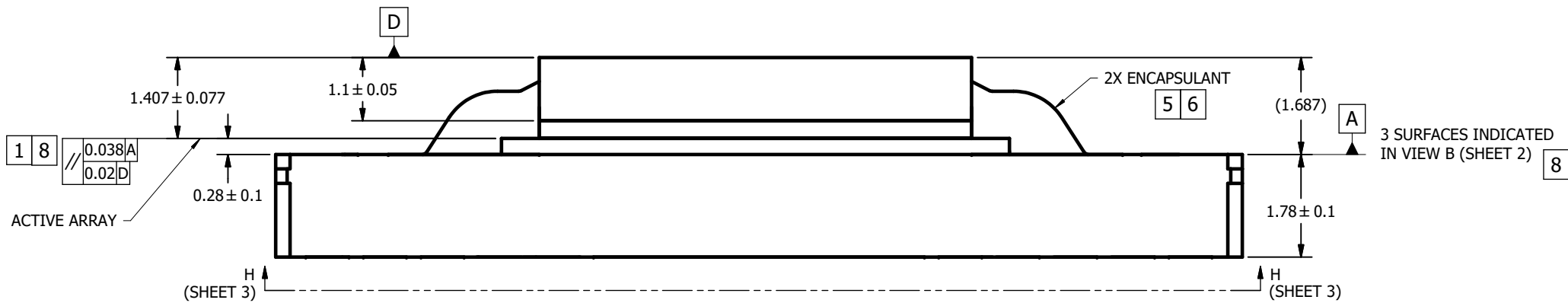
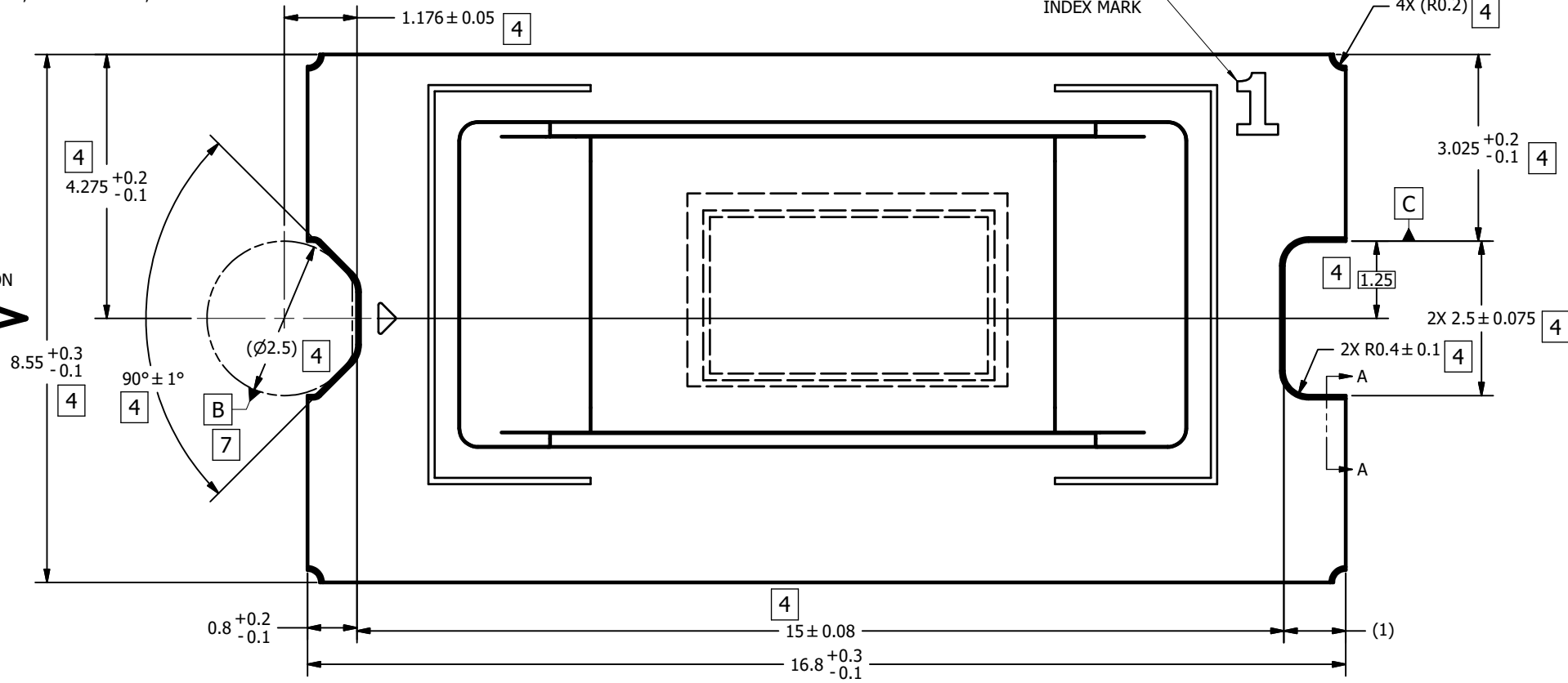
- 1 DIE PARALLELISM TOLERANCE APPLIES TO DMD ACTIVE ARRAY ONLY.
- 2 ROTATION ANGLE OF DMD ACTIVE ARRAY IS A REFINEMENT OF THE LOCATION TOLERANCE AND HAS A MAXIMUM ALLOWED VALUE OF 0.6 DEGREES.
- 3 BOUNDARY MIRRORS SURROUNDING THE DMD ACTIVE ARRAY.
- 4 NOTCH DIMENSIONS ARE DEFINED BY UPPERMOST LAYERS OF CERAMIC, AS SHOWN IN SECTION A-A.
- 5 ENCAPSULANT TO BE CONTAINED WITHIN DIMENSIONS SHOWN IN VIEW C (SHEET 2). NO ENCAPSULANT IS ALLOWED ON TOP OF THE WINDOW.
- 6 ENCAPSULANT NOT TO EXCEED THE HEIGHT OF THE WINDOW.
- 7 DATUM B IS DEFINED BY A DIA. 2.5 PIN, WITH A FLAT ON THE SIDE FACING TOWARD THE CENTER OF THE ACTIVE ARRAY, AS SHOWN IN VIEW B (SHEET 2).
- 8 WHILE ONLY THE THREE DATUM A TARGET AREAS A1, A2, AND A3 ARE USED FOR MEASUREMENT, ALL 4 CORNERS SHOULD BE CONTACTED, INCLUDING E1, TO SUPPORT MECHANICAL LOADS.

© COPYRIGHT 2021 TEXAS INSTRUMENTS
UN-PUBLISHED. ALL RIGHTS RESERVED.

| REV | | DESCRIPTION | DATE | BY |
|-----|--|------------------------------|-----------|-----|
| A | | ECO 2196032: INITIAL RELEASE | 7/26/2021 | BMH |

FRONT SIDE
INDEX MARK

(ILLUMINATION
DIRECTION)



SECTION A-A
NOTCH OFFSETS
SCALE 25:1

- UNLESS OTHERWISE SPECIFIED
- DIMENSIONS ARE IN MILLIMETERS
 - TOLERANCES:
 - ANGLES $\pm 1^\circ$
 - 2 PLACE DECIMALS ± 0.25
 - 1 PLACE DECIMALS ± 0.50
 - ~~DIMENSIONAL LIMITS APPLY BEFORE PROCESSING~~
 - INTERPRET DIMENSIONS IN ACCORDANCE WITH ASME Y14.5M-1994
 - ~~REMOVE ALL BURRS AND SHARP EDGES~~
 - PARENTHETICAL INFORMATION FOR REFERENCE ONLY

DRAWN
B. HASKETT
ENGINEER
P. CREERY
QA/CE
M. DOUGLASS
CM
B. MENDOZA
B. RAY
APPROVED
J. MCKINLEY

DATE
7/26/2021
7/26/2021
7/29/2021
7/26/2021
7/26/2021
7/26/2021

TEXAS
INSTRUMENTS
Dallas, Texas

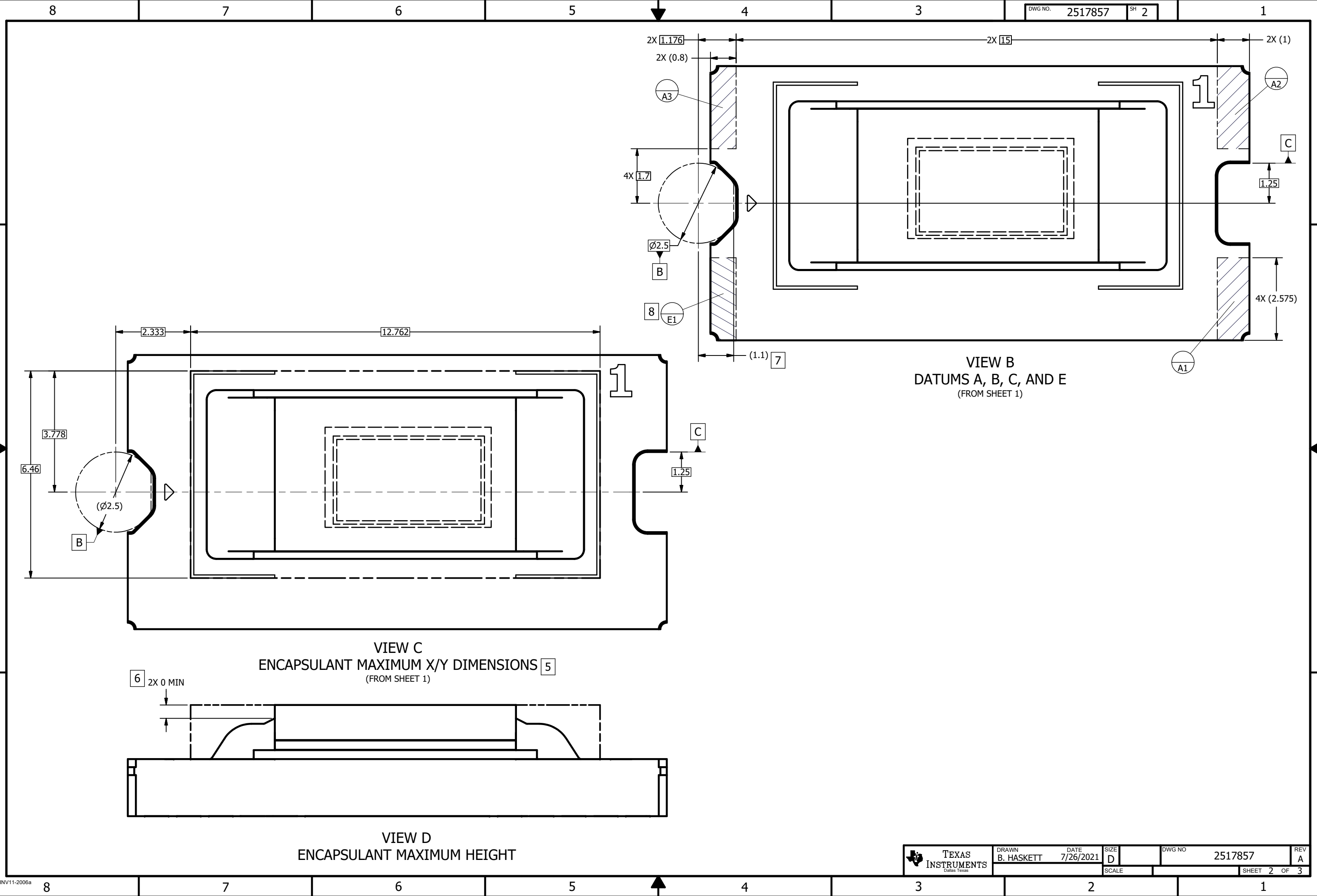
TITLE
ICD, MECHANICAL, DMD,
.2 AUTO 16:9 SERIES 249
(FQU PACKAGE)

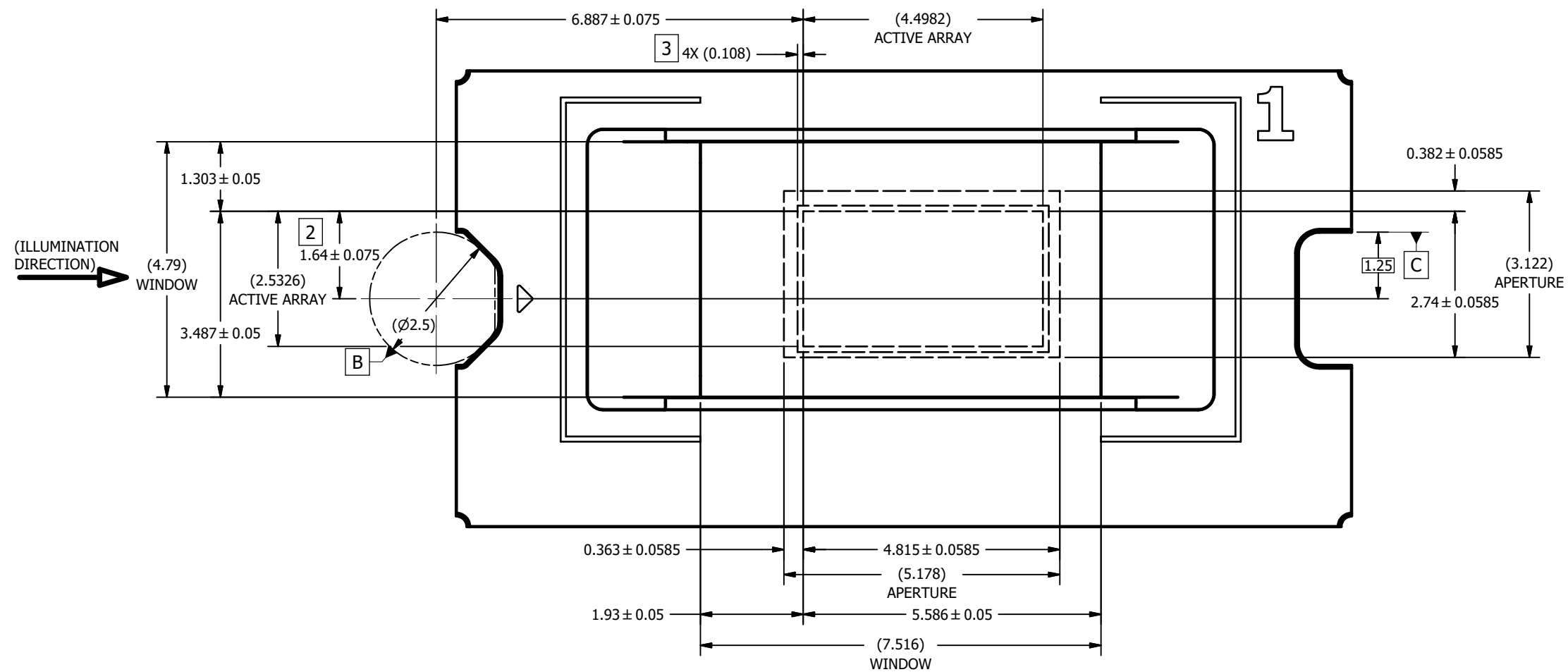
SIZE
D
SCALE
20:1

DWG NO
2517857

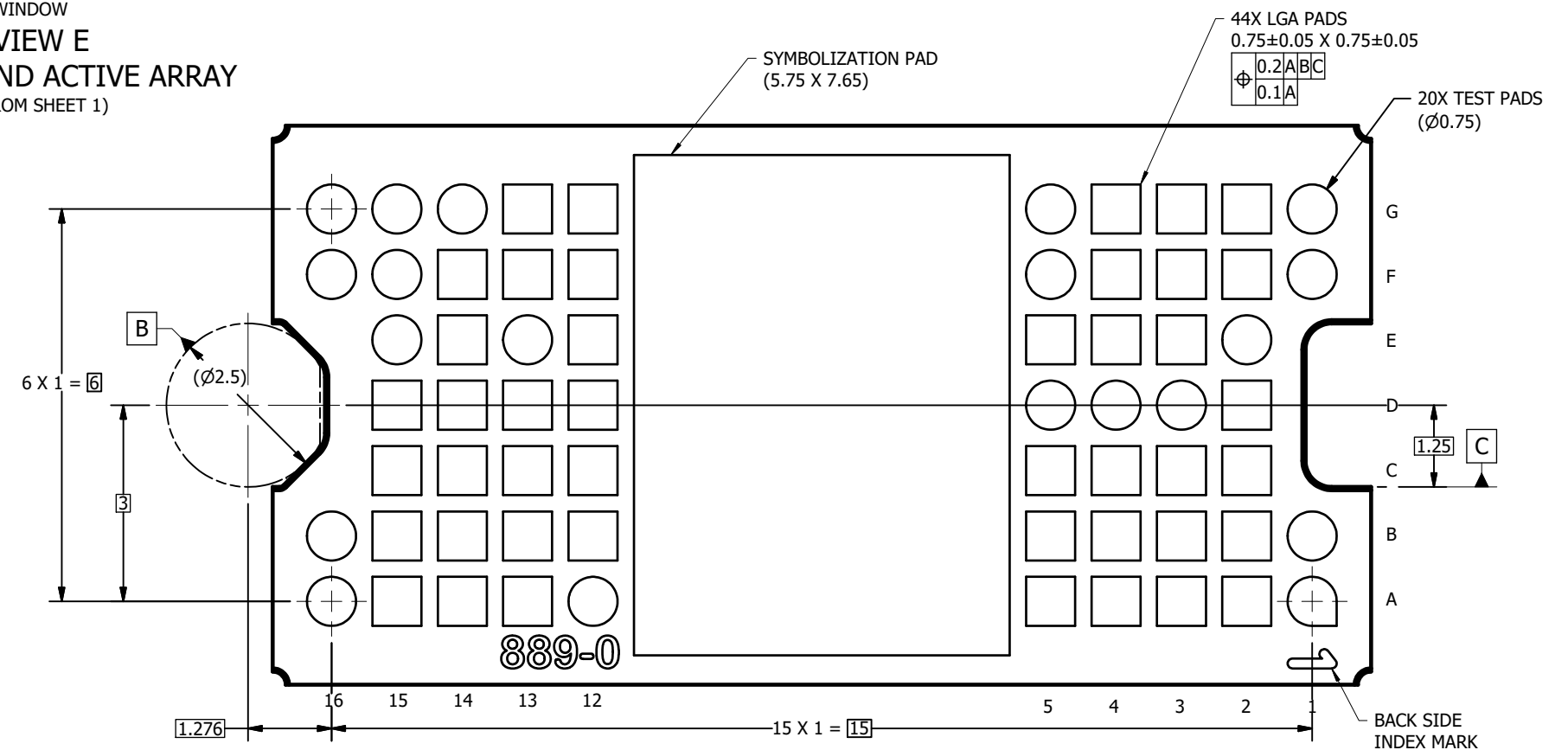
REV
A

SHEET 1 OF 3





VIEW E
WINDOW AND ACTIVE ARRAY
(FROM SHEET 1)



VIEW H-H
BACK SIDE METALLIZATION
(FROM SHEET 1)