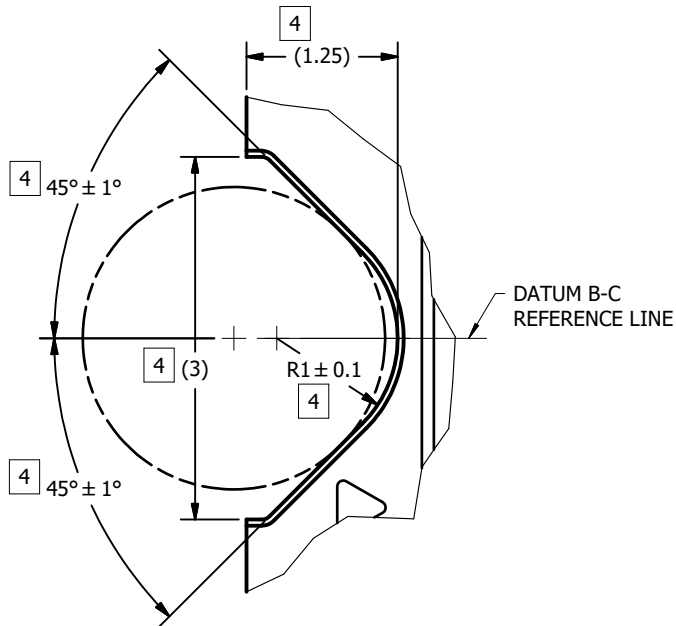


NOTES UNLESS OTHERWISE SPECIFIED:

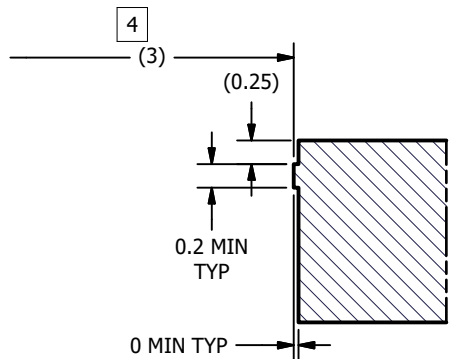
- 1 DIE PARALLELISM TOLERANCE APPLIES TO DMD ACTIVE ARRAY ONLY.
- 2 ROTATION ANGLE OF DMD ACTIVE ARRAY IS A REFINEMENT OF THE LOCATION TOLERANCE AND HAS A MAXIMUM ALLOWED VALUE OF 0.6 DEGREES.
- 3 BOUNDARY MIRRORS SURROUNDING THE DMD ACTIVE ARRAY.
- 4 NOTCH DIMENSIONS ARE DEFINED BY SECOND LAYER OF CERAMIC, AS SHOWN IN SECTION A-A.
- 5 ENCAPSULANT TO BE CONTAINED WITHIN DIMENSIONS SHOWN IN VIEW D (SHEET 3). NO ENCAPSULANT IS ALLOWED ON TOP OF THE WINDOW.
- 6 ENCAPSULANT NOT TO EXCEED THE HEIGHT OF THE WINDOW.
- 7 SEE DETAIL B FOR "V-NOTCH" DIMENSIONS.
- 8 WHILE ONLY THE THREE DATUM A TARGET AREAS A1, A2, AND A3 ARE USED FOR MEASUREMENT, ALL 4 CORNERS SHOULD BE CONTACTED, INCLUDING E1, TO SUPPORT MECHANICAL LOADS.
- 9 SHORTING TEST PADS AND SYMBOLIZATION PAD TO EACH OTHER AND/OR TO VSS IS ACCEPTABLE.

© COPYRIGHT 2025 TEXAS INSTRUMENTS
UN-PUBLISHED. ALL RIGHTS RESERVED.

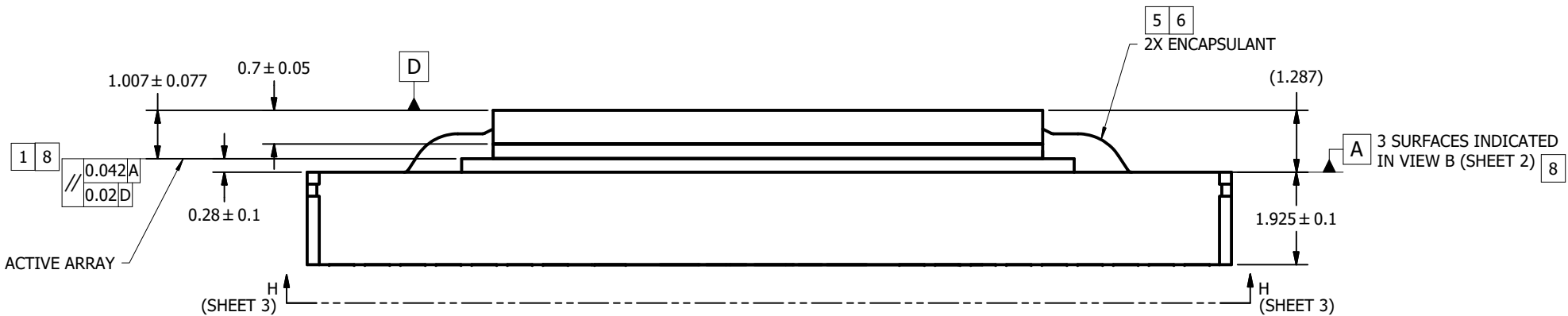
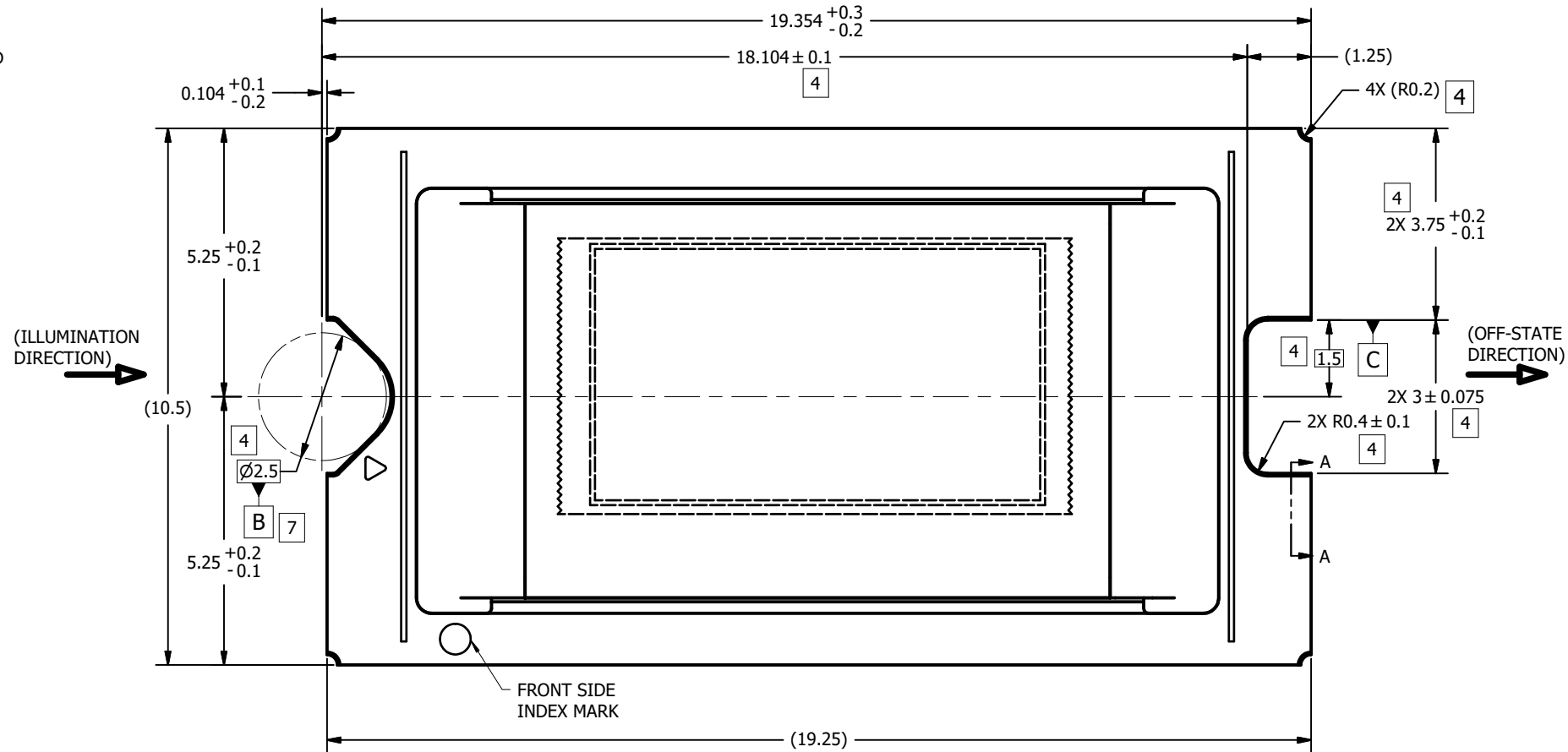
REV		DESCRIPTION	DATE	BY
A	ECO 2212785: INITIAL RELEASE		4/28/2025	JER



DETAIL B
V-NOTCH
SCALE 32 : 1



SECTION A-A
NOTCH OFFSETS
SCALE 25 : 1
(ROTATED 90°)

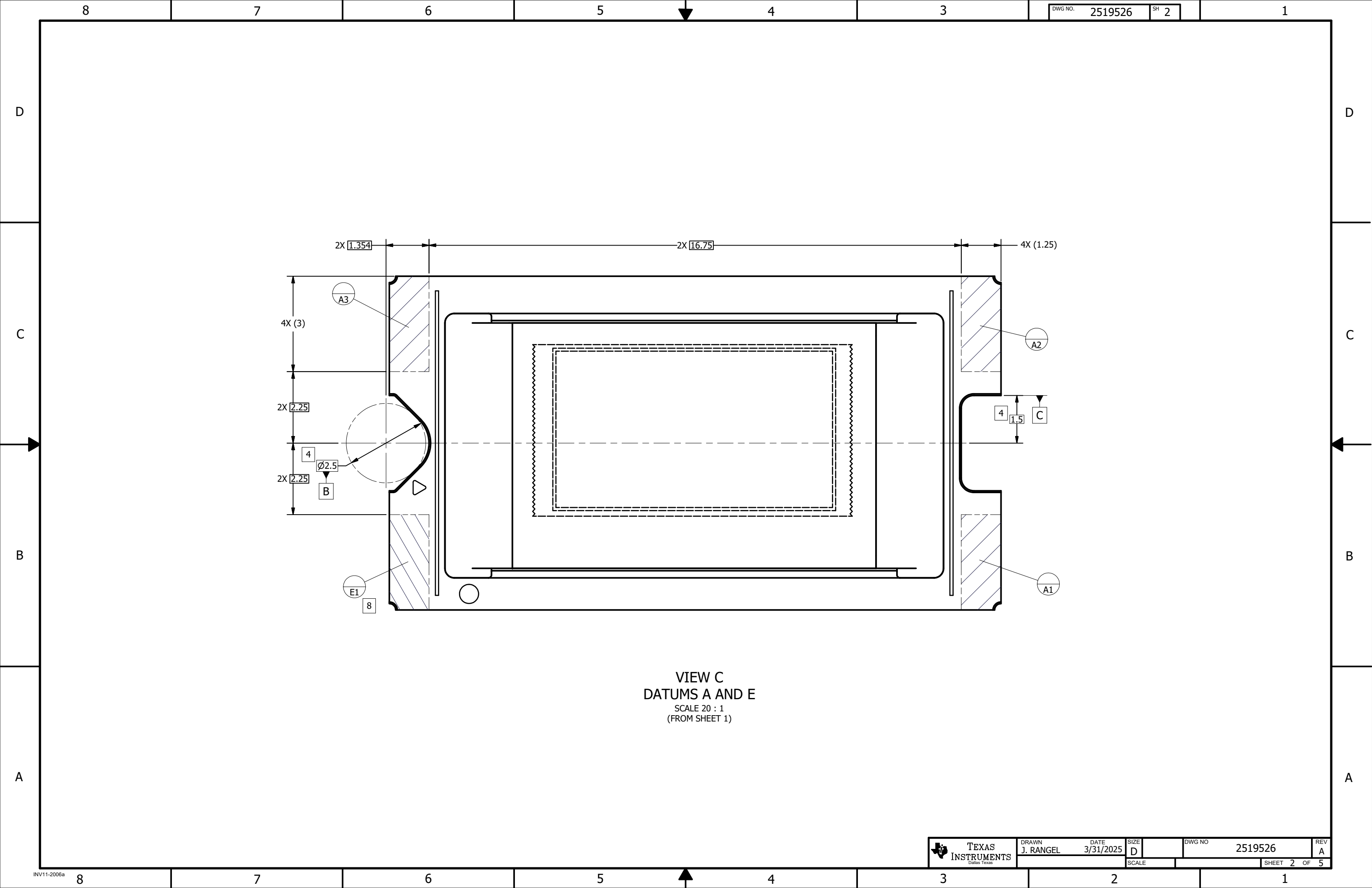


0314DA	USED ON
NEXT ASSY	APPLICATION

UNLESS OTHERWISE SPECIFIED
• DIMENSIONS ARE IN MILLIMETERS
• TOLERANCES:
ANGLES ± 1°
2 PLACE DECIMALS ± 0.25
1 PLACE DECIMALS ± 0.50
• ~~DIMENSIONAL LIMITS APPLY BEFORE PROCESSING~~
• INTERPRET DIMENSIONS IN ACCORDANCE WITH ASME Y14.5M-1994
• ~~REMOVE ALL BURRS AND SHARP EDGES~~
• PARENTHETICAL INFORMATION FOR REFERENCE ONLY

DRAWN J. RANGEL ENGINEER J. RANGEL QA/CE P. KONRAD CM J. MCKINLEY	DATE 3/31/2025 3/31/2025 4/22/2025 4/21/2025
APPROVED P. BOWLING	4/21/2025

TEXAS INSTRUMENTS Dallas, Texas		TITLE ICD, MECHANICAL, DMD, .39 AUTO SERIES 322 (FSD PACKAGE)	
SIZE D	SCALE 16:1	DWG NO 2519526	REV A
SHEET 1 OF 5			



VIEW C
DATUMS A AND E
SCALE 20 : 1
(FROM SHEET 1)

8

7

6

5

4

3

DWG NO. 2519526

SH 3

1

D

D

C

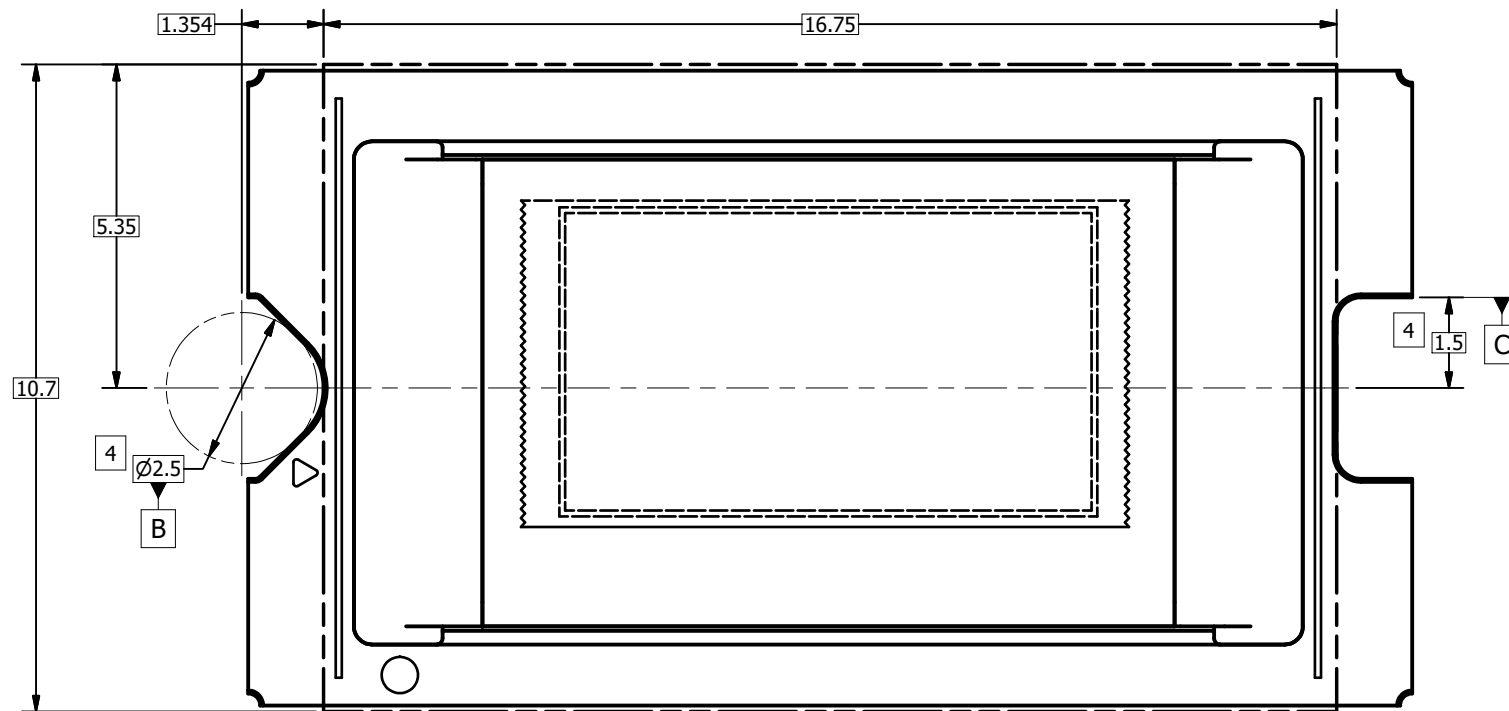
C

B

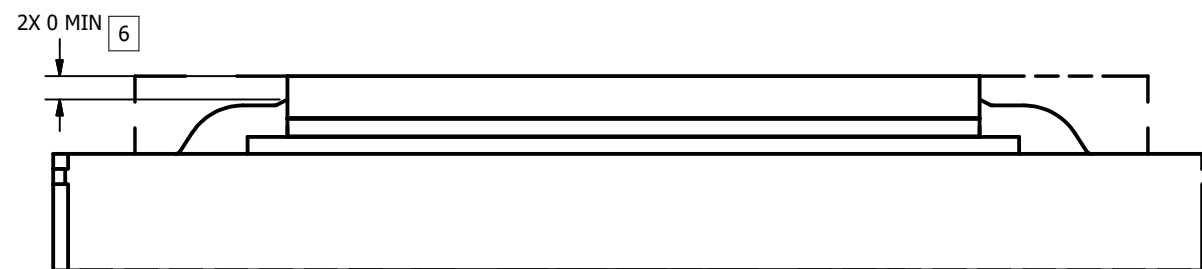
B

A

A



VIEW D
ENCAPSULANT MAXIMUM X/Y DIMENSIONS
(FROM SHEET 1)



VIEW E
ENCAPSULANT MAXIMUM HEIGHT



DRAWN
J. RANGEL

DATE
3/31/2025

SIZE
D

DWG NO.

2519526

REV
A

SCALE

SHEET 3 OF 5

8

7

6

5

4

3

DWG NO. 2519526

SH 4

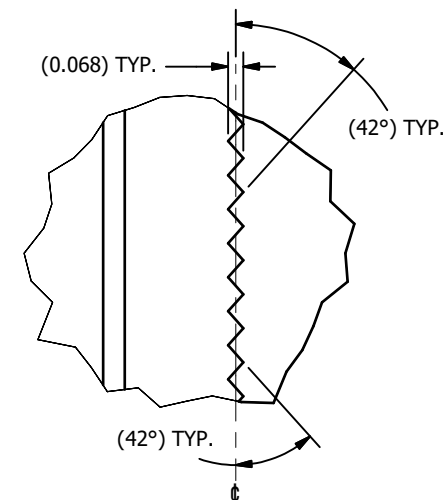
1

D

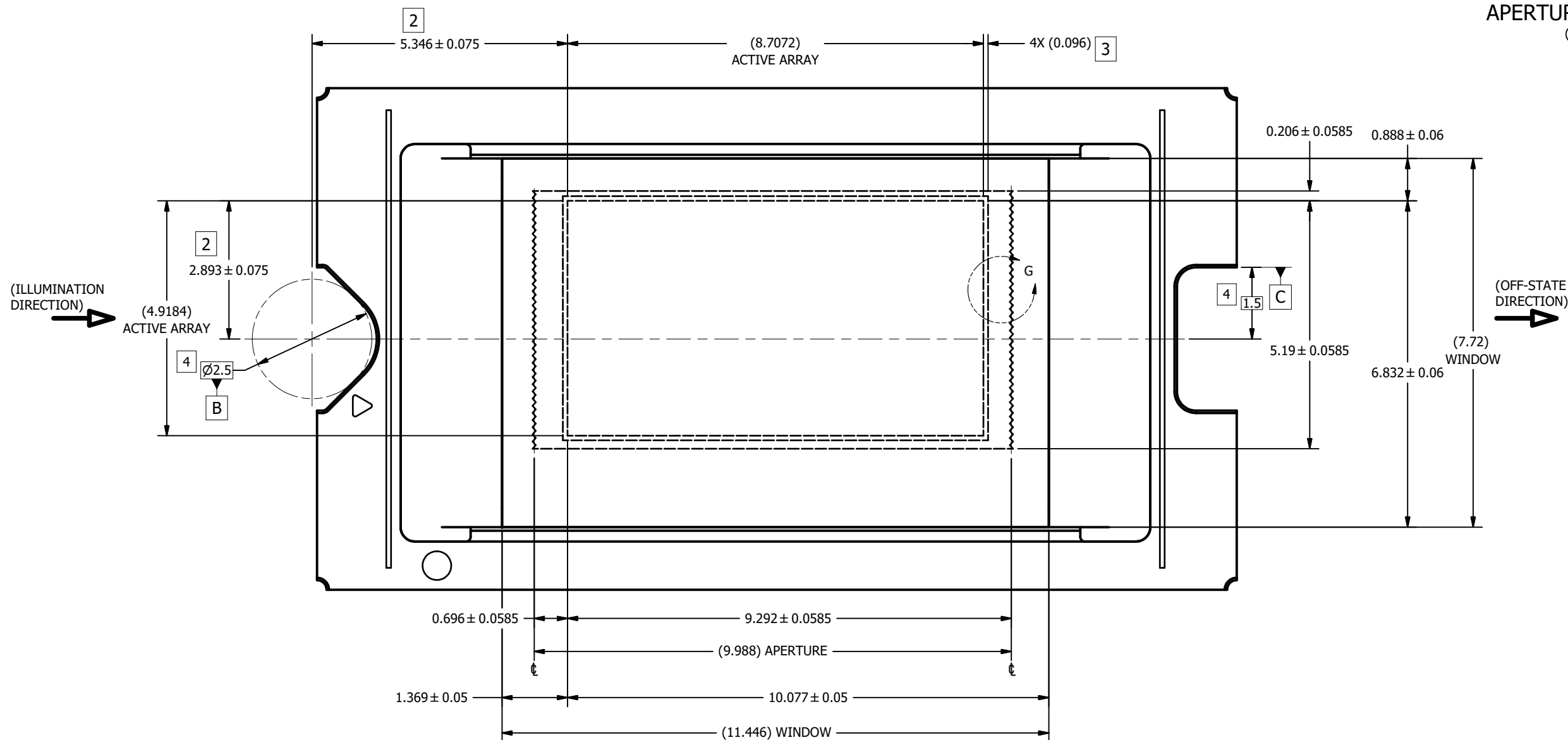
C

B

A



DETAIL G
APERTURE LEFT AND RIGHT EDGES
(GLASS OMITTED FOR CLARITY)
SCALE 60 : 1



VIEW F
WINDOW AND ACTIVE ARRAY
SCALE 20 : 1
(FROM SHEET 1)



DRAWN
J. RANGEL
DATE
3/31/2025

SIZE
D

DWG NO.
2519526

REV
A

SCALE

SHEET 4 OF 5

8

7

6

5

4

3

2

1

