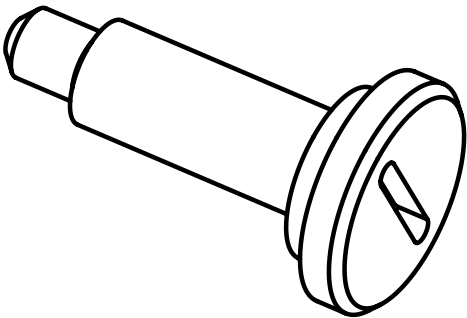
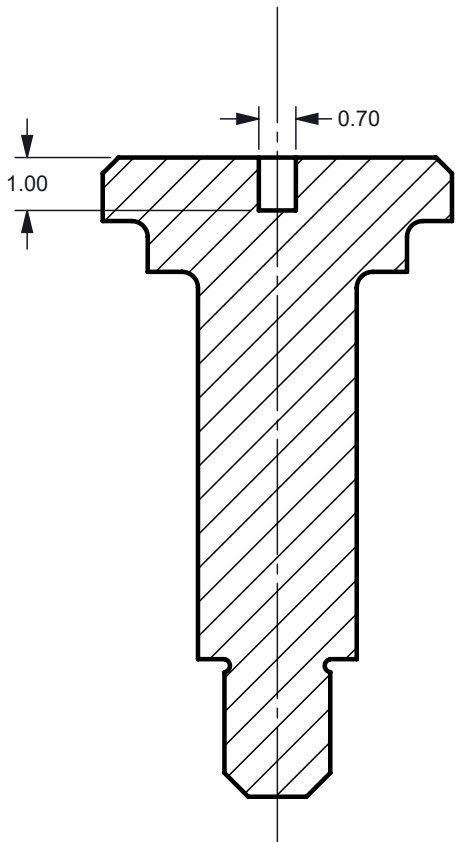
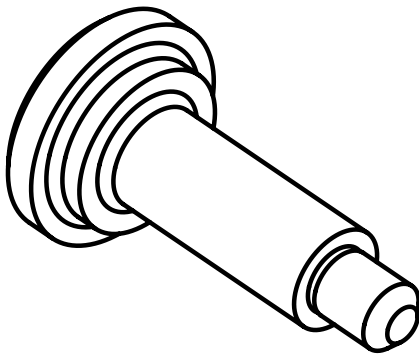
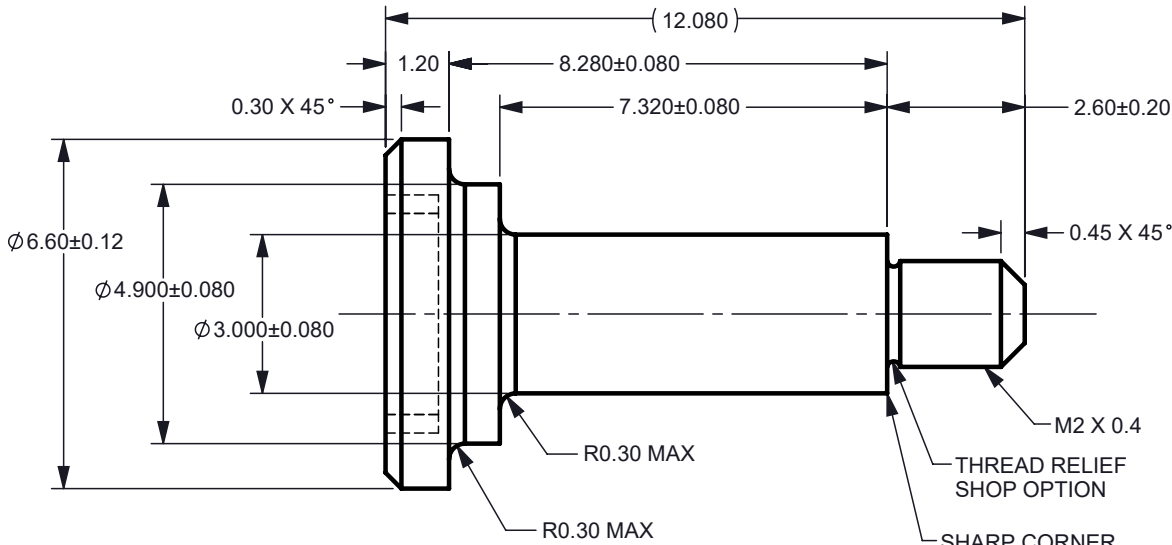
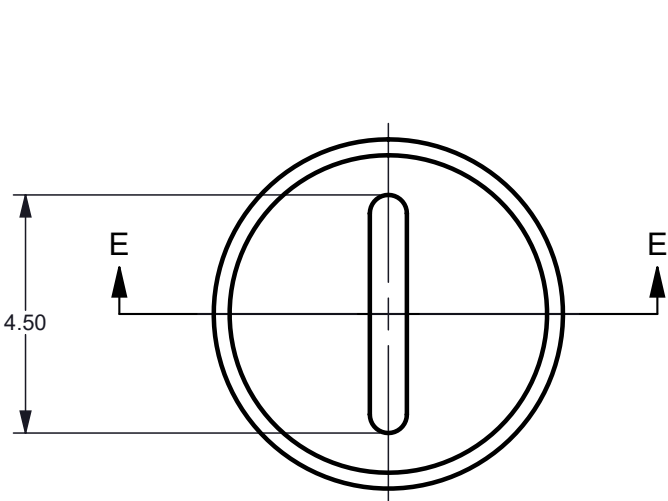



NOTES: UNLESS OTHERWISE SPECIFIED:
1. PARTS TO BE CLEAN AND OIL FREE

© COPYRIGHT 2023 TEXAS INSTRUMENTS
UNPUBLISHED, ALL RIGHTS RESERVED

REVISIONS			
REV	DESCRIPTION	DATE	BY
A	INITIAL RELEASE	05/17/2023	JTM



AR	1	f	STAINLESS STEEL ALY 303			
QTY	ITEM	PART NUMBER		DESCRIPTION		Notes
Part List						
	UNLESS OTHERWISE SPECIFIED			DWN J. McKINLEY	DATE	
	<ul style="list-style-type: none">● DIMENSIONS ARE IN MILLIMETERS● TOLERANCES: ANGLES ±1° 2 PLACE DECIMALS ±0.25 1 PLACE DECIMALS ±0.50● DIMENSIONAL LIMITS APPLY BEFORE PROCESSES● INTERPRET DIMENSIONS IN ACCORDANCE WITH ASME Y14.5M-1994● REMOVE ALL BURRS AND SHARP EDGES● PARENTHETICAL INFO FOR REF ONLY			Engr	<div> TEXAS INSTRUMENTS</div> <div>SCREW, SHOULDER</div>	
				CQE/QA		
				CM		
0314RD						
0314RD					SIZE B	
USED ON					DWG NO 2518814	REV A
APPLICATION				SCALE 2:1		SHEET 1 OF 1

