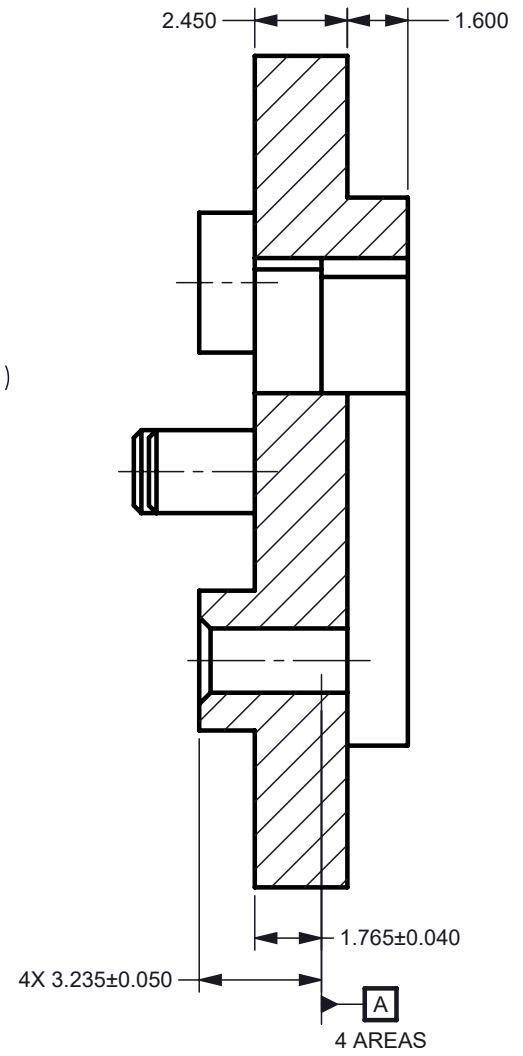
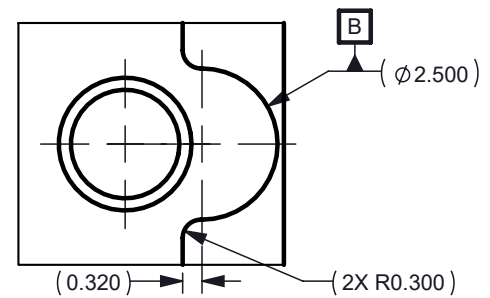


REV	DESCRIPTION	DATE	BY
A	FORMAL RELEASE	05/16/2023	JTM




A line drawing of a rectangular plate with a central rectangular frame and four circular components at the corners. The plate is shown at an angle, with the top-left corner being the closest to the viewer. The central frame is defined by two parallel lines. At each of the four corners of the plate, there is a circular component. Each circular component has a central dot and concentric circles, resembling a bolt or a sensor. The entire drawing is composed of simple black lines on a white background.



THIRD ANGLE PROJECTION

The diagram illustrates the third angle projection of a truncated cone. On the left is the top view, represented by a circle with a crosshair indicating the center. On the right is the front view, represented by a truncated cone. A horizontal centerline passes through both views. Vertical projection lines extend from the top view to the front view, and a hidden line is shown in the front view to indicate the back edge of the object.

AR	1			ALUMINUM PLATE, 6061-T6			
QTY	ITEM	PART NUMBER		DESCRIPTION		Notes	
Part List							
		UNLESS OTHERWISE SPECIFIED		<div> <div>DWN J. McKINLEY</div> <div>DATE</div> </div>		<div>  <div>TEXAS INSTRUMENTS</div> </div>	
		<ul style="list-style-type: none"> DIMENSIONS ARE IN MILLIMETERS TOLERANCES: ANGLES $\pm 1^\circ$ <ul style="list-style-type: none"> 2 PLACE DECIMALS ± 0.25 1 PLACE DECIMALS ± 0.50 DIMENSIONAL LIMITS APPLY BEFORE PROCESSES INTERPRET DIMENSIONS IN ACCORDANCE WITH ASME Y14.5M-1994 REMOVE ALL BURRS AND SHARP EDGES PARENTHETICAL INFO FOR REF ONLY 		<div>Engr</div> <div>COE/QA</div> <div>CM</div>		<div>INTERFACE, SERIES 322 MOUNTING CONCEPT 8809</div>	
0314RD				<div> <div>SIZE B</div> <div></div> </div>		<div> <div>DWG NO</div> <div>2518810</div> </div>	
USED ON				<div> <div>Apprvd</div> <div></div> </div>		<div> <div>SCALE 5:1</div> <div></div> </div>	
LOCATION						<div> <div>SHEET</div> <div>1 OF 2</div> </div>	

