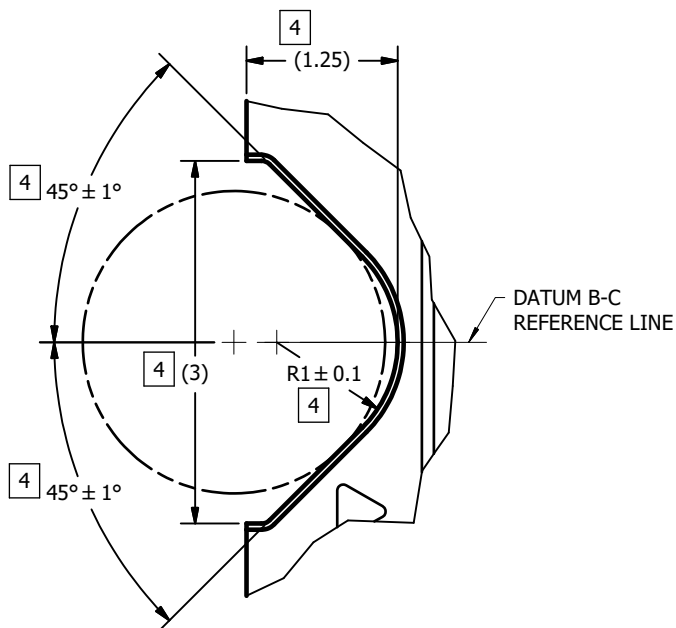


NOTES UNLESS OTHERWISE SPECIFIED:

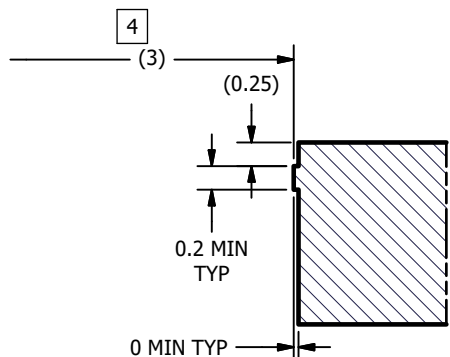
- 1 DIE PARALLELISM TOLERANCE APPLIES TO DMD ACTIVE ARRAY ONLY.
- 2 ROTATION ANGLE OF DMD ACTIVE ARRAY IS A REFINEMENT OF THE LOCATION TOLERANCE AND HAS A MAXIMUM ALLOWED VALUE OF 0.6 DEGREES.
- 3 BOUNDARY MIRRORS SURROUNDING THE DMD ACTIVE ARRAY.
- 4 NOTCH DIMENSIONS ARE DEFINED BY SECOND LAYER OF CERAMIC, AS SHOWN IN SECTION A-A.
- 5 ENCAPSULANT TO BE CONTAINED WITHIN DIMENSIONS SHOWN IN VIEW D (SHEET 3). NO ENCAPSULANT IS ALLOWED ON TOP OF THE WINDOW.
- 6 ENCAPSULANT NOT TO EXCEED THE HEIGHT OF THE WINDOW.
- 7 SEE DETAIL B FOR "V-NOTCH" DIMENSIONS.
- 8 WHILE ONLY THE THREE DATUM A TARGET AREAS A1, A2, AND A3 ARE USED FOR MEASUREMENT, ALL 4 CORNERS SHOULD BE CONTACTED, INCLUDING E1, TO SUPPORT MECHANICAL LOADS.
- 9 SHORTING TEST PADS AND SYMBOLIZATION PAD TO EACH OTHER AND/OR TO VSS IS ACCEPTABLE.

© COPYRIGHT 2023 TEXAS INSTRUMENTS  
UN-PUBLISHED. ALL RIGHTS RESERVED.

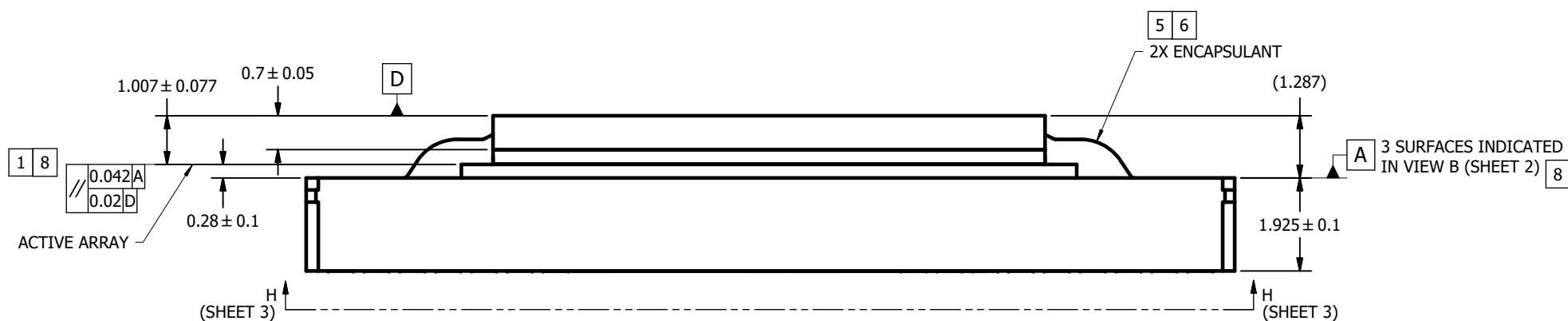
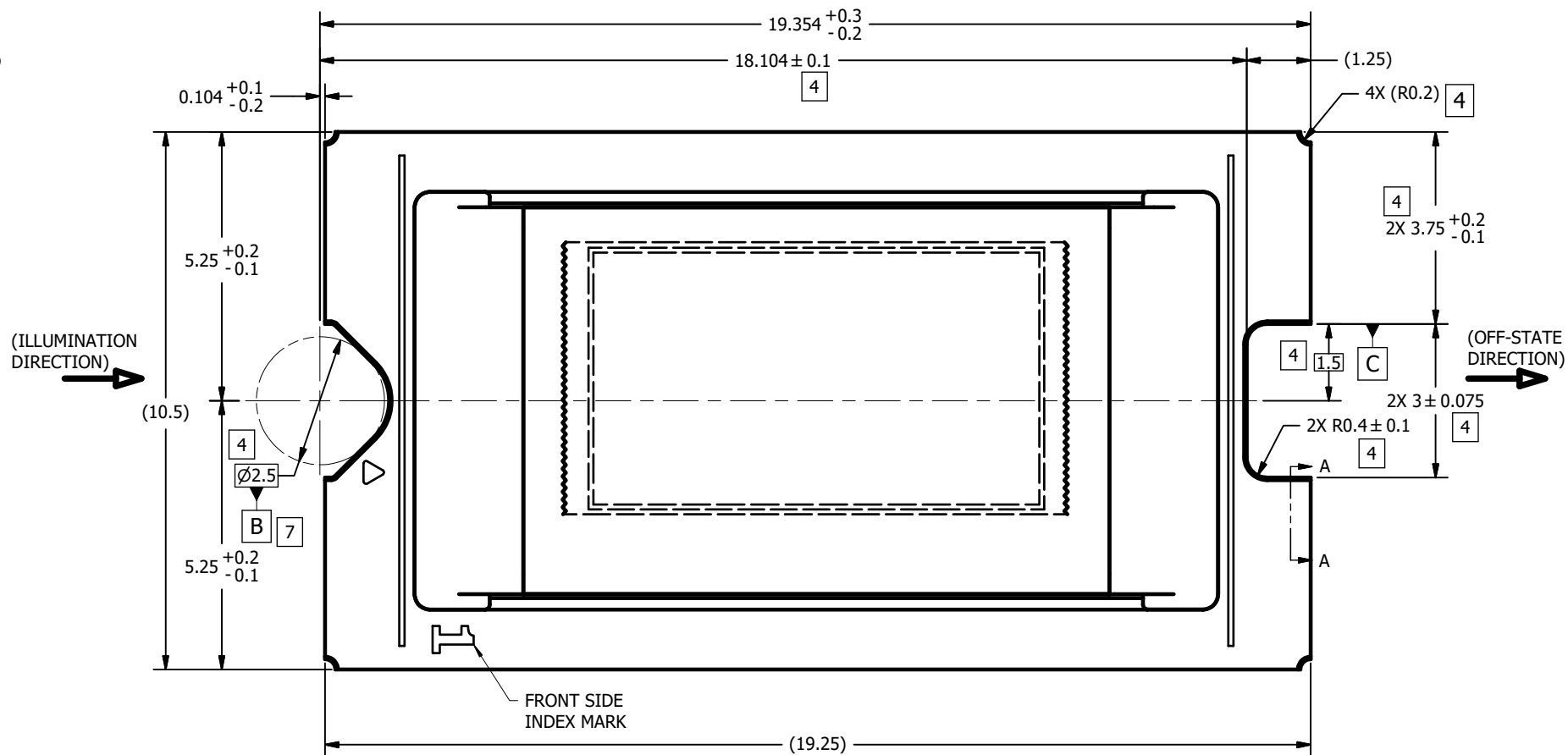
REV		DESCRIPTION	DATE	BY
A	ECO 2204226:	INITIAL RELEASE	5/1/2023	BMH



DETAIL B  
V-NOTCH  
SCALE 32 : 1



SECTION A-A  
NOTCH OFFSETS  
SCALE 25 : 1  
(ROTATED 90°)

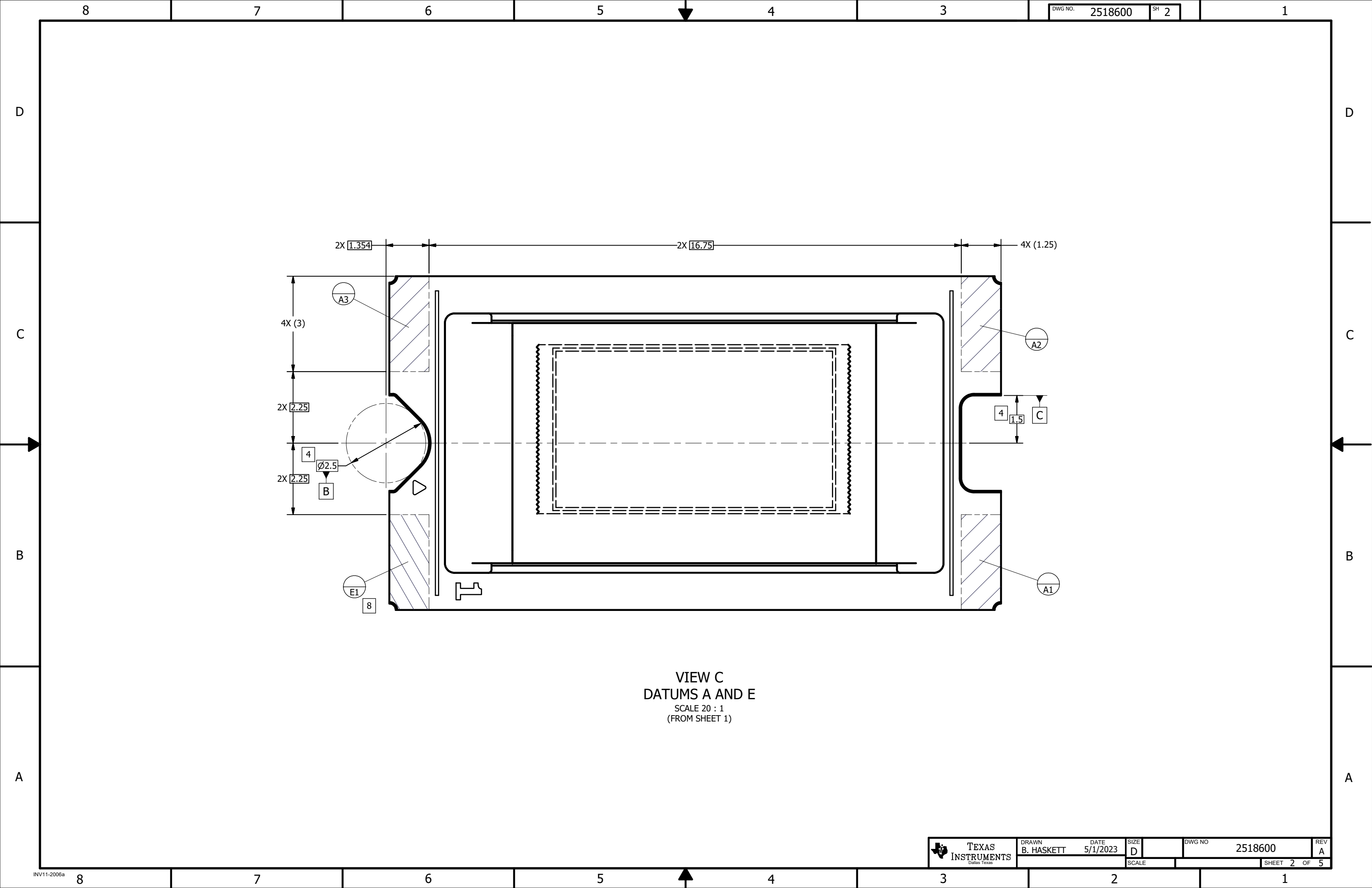


0314DA	USED ON
NEXT ASSY	APPLICATION

UNLESS OTHERWISE SPECIFIED  
● DIMENSIONS ARE IN MILLIMETERS  
● TOLERANCES:  
ANGLES ± 1°  
2 PLACE DECIMALS ± 0.25  
1 PLACE DECIMALS ± 0.50  
~~● DIMENSIONAL LIMITS APPLY BEFORE PROCESSING~~  
● INTERPRET DIMENSIONS IN ACCORDANCE WITH ASME Y14.5M-1994  
~~● REMOVE ALL BURRS AND SHARP EDGES~~  
● PARENTHEetical INFORMATION FOR REFERENCE ONLY

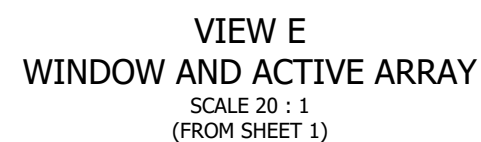
DRAWN B. HASKETT	DATE 5/1/2023
ENGINEER B. HASKETT	5/1/2023
QA/CE P. KONRAD	5/2/2023
CM J. MCKINLEY	5/1/2023
APPROVED HERMOSILLO	5/1/2023

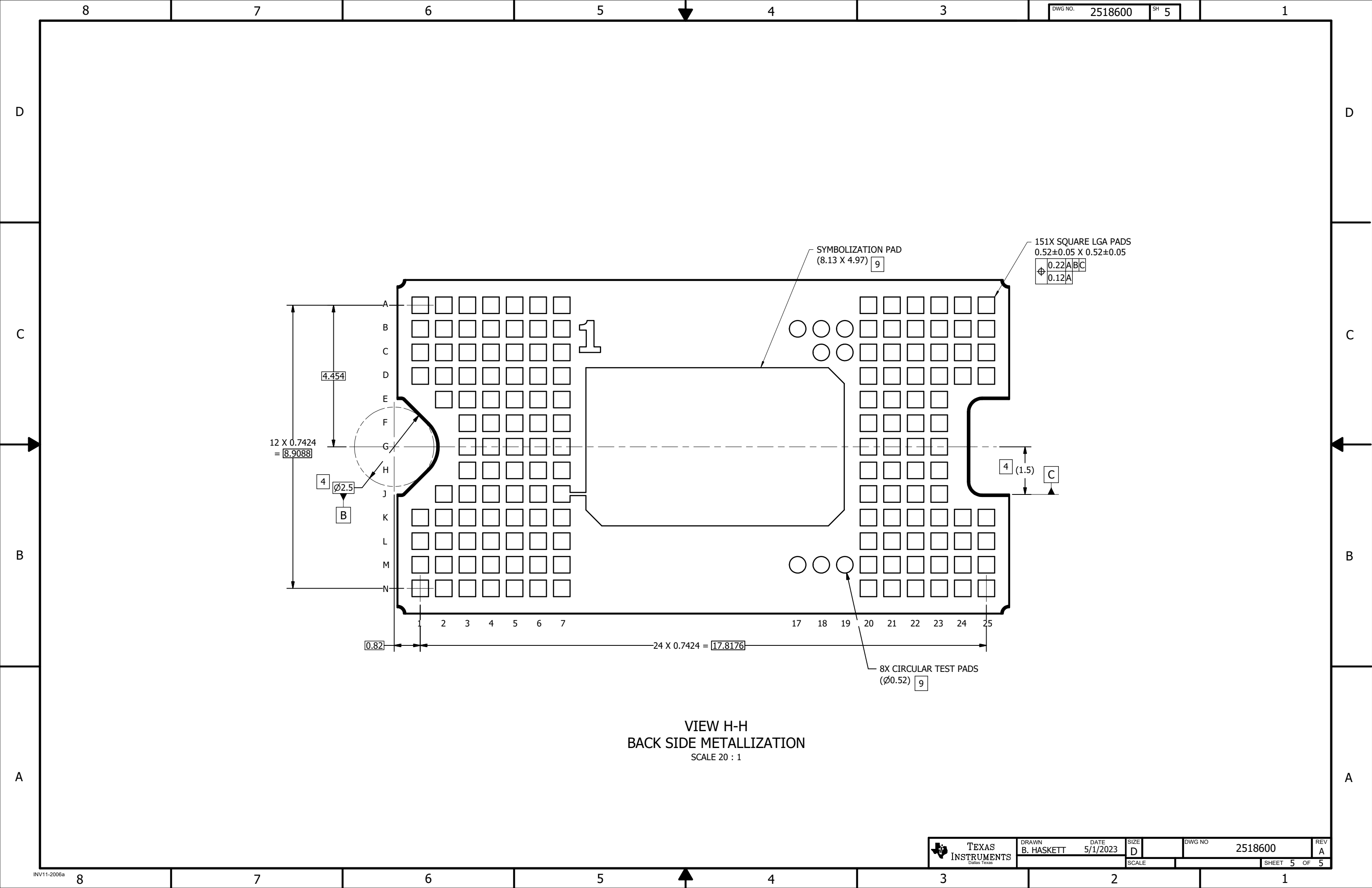
TEXAS INSTRUMENTS Dallas, Texas		TITLE ICD, MECHANICAL, DMD, .39 4K SERIES 322 (FQZ PACKAGE)	
SIZE D	DWG NO 2518600	REV A	
SCALE 16:1	SHEET 1 OF 5		



VIEW C  
DATUMS A AND E  
SCALE 20 : 1  
(FROM SHEET 1)







VIEW H-H  
BACK SIDE METALLIZATION  
SCALE 20 : 1