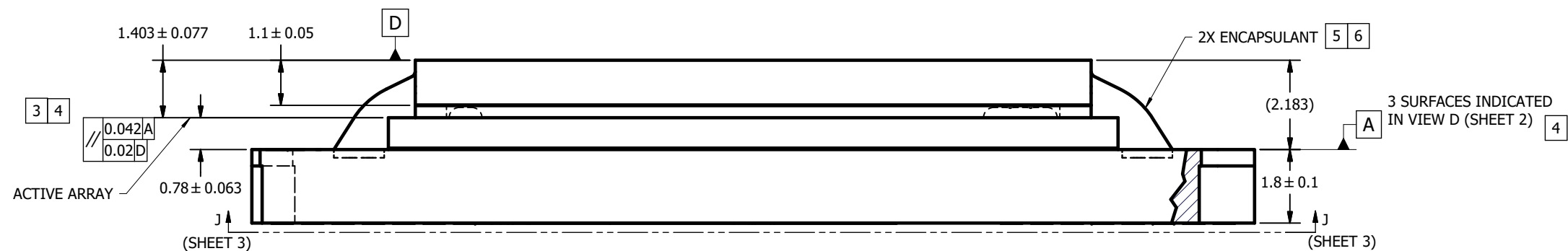
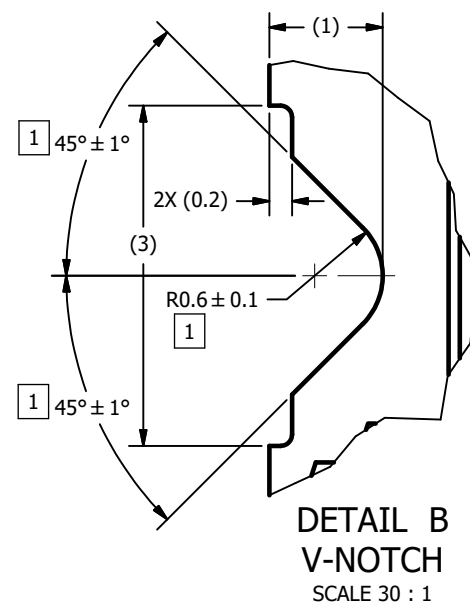
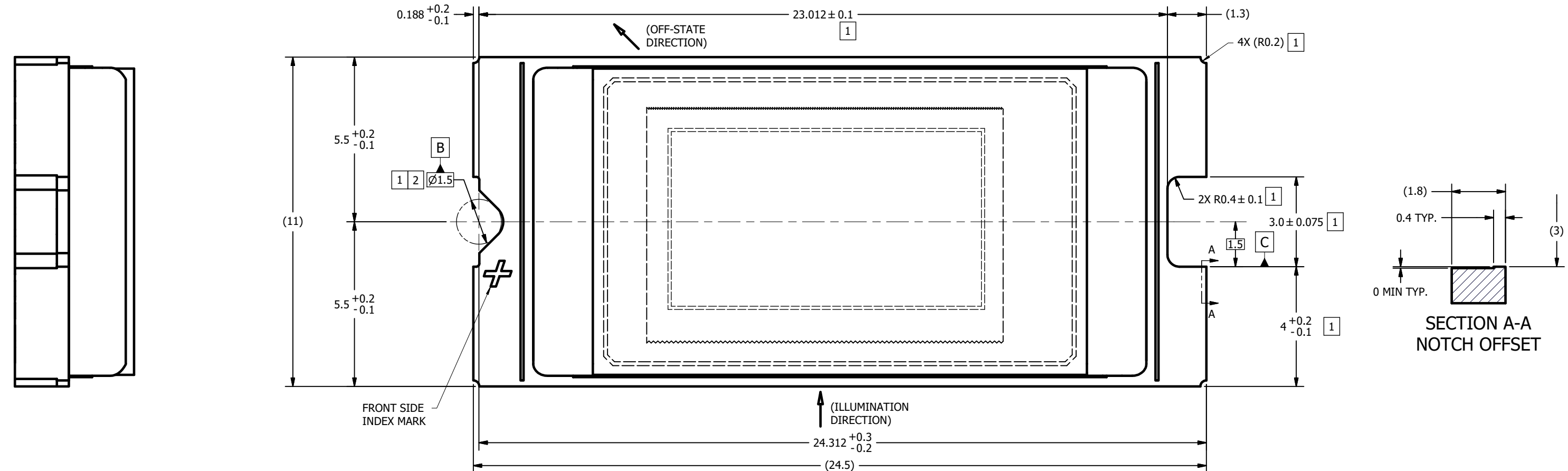


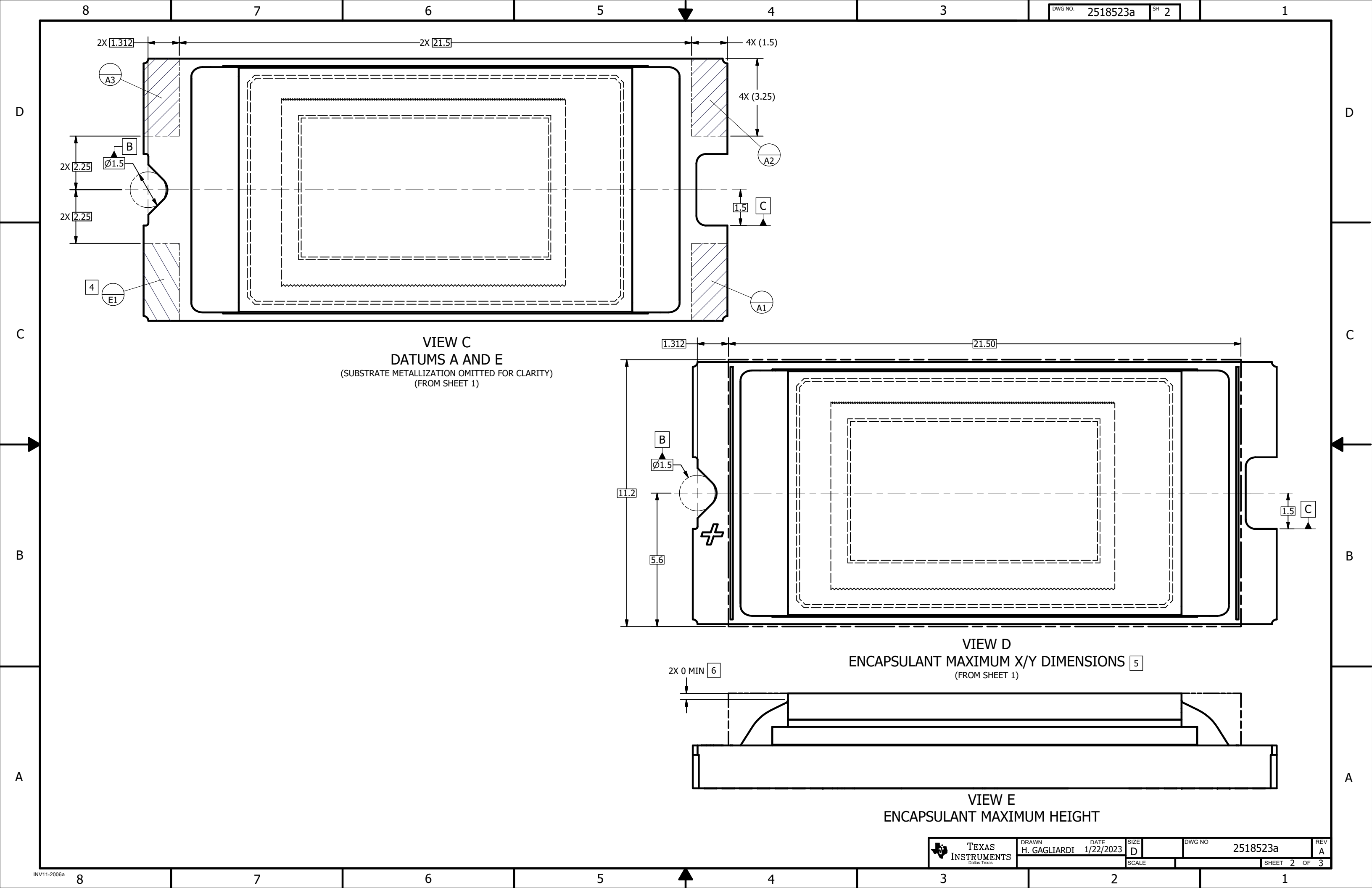
NOTES UNLESS OTHERWISE SPECIFIED:

- | | |
|---|--|
| 1 | NOTCH DIMENSIONS ARE DEFINED BY UPPERMOST LAYERS OF CERAMIC, AS SHOWN IN SECTION A-A. |
| 2 | SEE DETAIL B FOR "V-NOTCH" DIMENSIONS. |
| 3 | DIE PARALLELISM TOLERANCE APPLIES TO DMD ACTIVE ARRAY ONLY. |
| 4 | WHILE ONLY THE THREE DATUM A TARGET AREAS A1, A2, AND A3 ARE USED FOR MEASUREMENT, ALL 4 CORNERS SHOULD BE CONTACTED, INCLUDING E1, TO SUPPORT MECHANICAL LOADS. |
| 5 | ENCAPSULANT TO BE CONTAINED WITHIN DIMENSIONS SHOWN IN VIEW D (SHEET 2). NO ENCAPSULANT IS ALLOWED ON TOP OF THE WINDOW. |
| 6 | ENCAPSULANT NOT TO EXCEED THE HEIGHT OF THE WINDOW. |
| 7 | ROTATION ANGLE OF DMD ACTIVE ARRAY IS A REFINEMENT OF THE LOCATION TOLERANCE AND HAS A MAXIMUM ALLOWED VALUE OF 0.6 DEGREES. |
| 8 | BOUNDARY MIRRORS SURROUNDING THE DMD ACTIVE ARRAY. |

© COPYRIGHT 2022 TEXAS INSTRUMENTS
UN-PUBLISHED, ALL RIGHTS RESERVED

REVISIONS			
REV	DESCRIPTION	DATE	BY
A	ECO 2202674: INITIAL RELEASE	12/22/22	HG





D

C

B

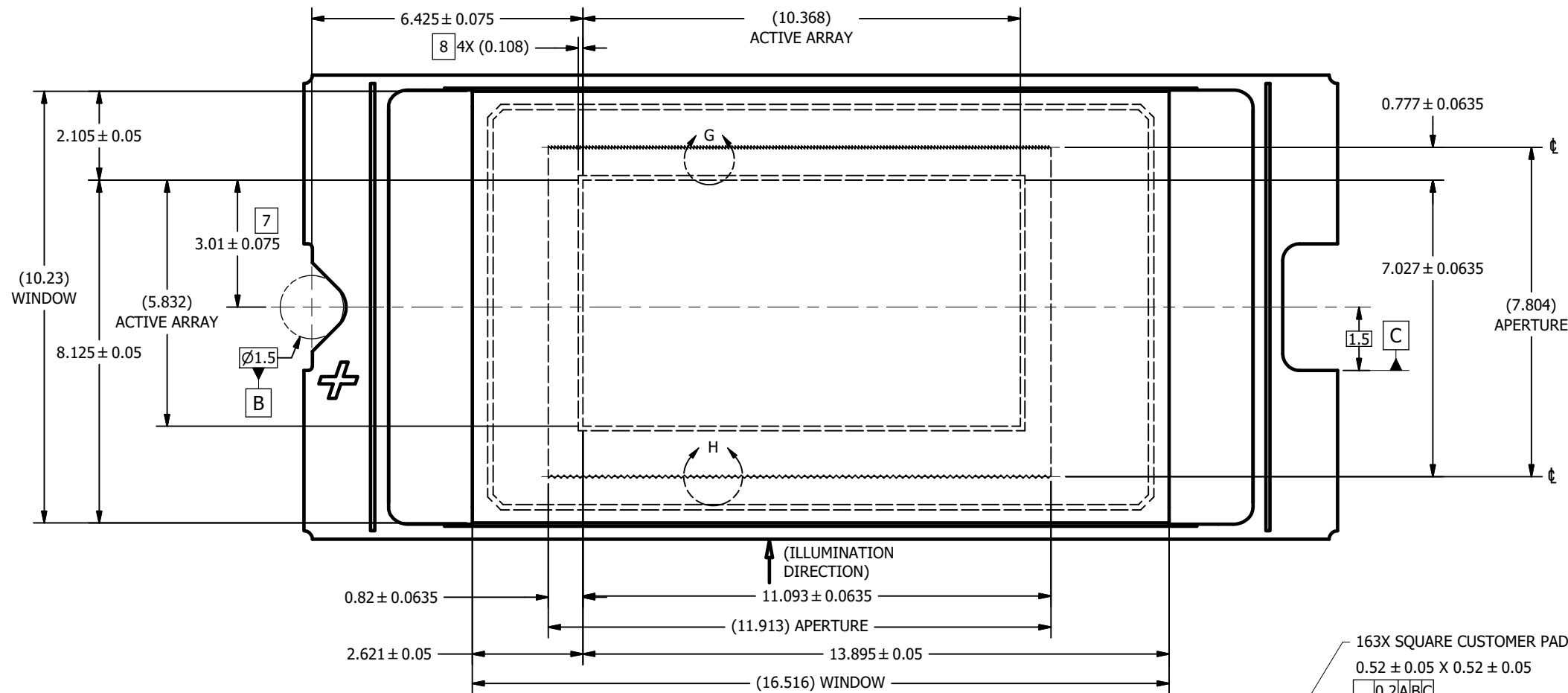
A

D

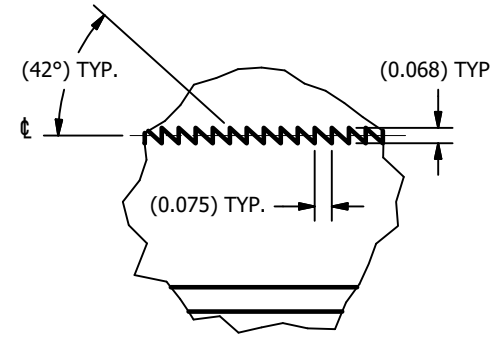
C

B

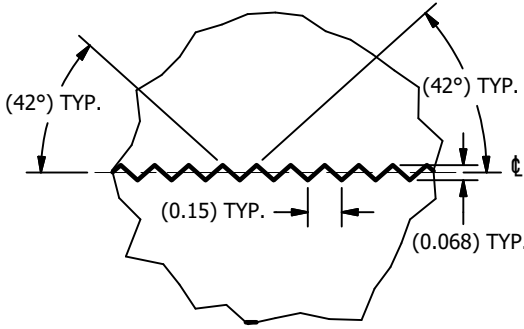
A



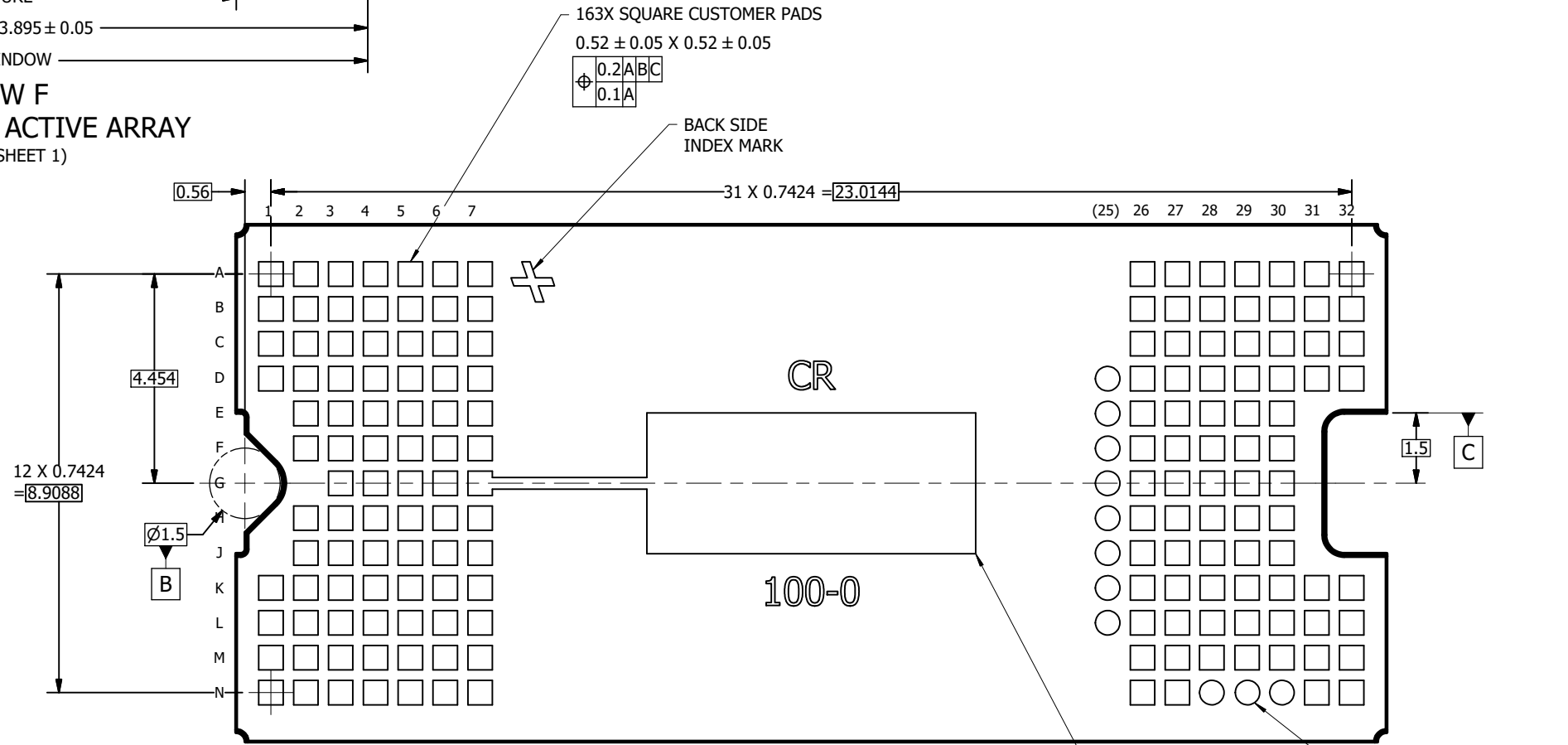
VIEW F
WINDOW AND ACTIVE ARRAY
(FROM SHEET 1)



DETAIL G
APERTURE TOP EDGE
SCALE 60 : 1



DETAIL H
APERTURE BOTTOM EDGE
SCALE 60 : 1



VIEW J-J
BACK SIDE METALLIZATION
(FROM SHEET 1)