

8

7

6

5

4

3

DWG NO 2514366

SH 1

1

NOTES: UNLESS OTHERWISE SPECIFIED:

- 1 DIE PARALLELISM TOLERANCE APPLIES TO DMD ACTIVE ARRAY ONLY
- 2 ROTATION ANGLE OF DMD ACTIVE ARRAY IS A REFINEMENT OF THE LOCATION TOLERANCE AND HAS A MAXIMUM ALLOWED VALUE OF 0.8 DEGREES
- 3 SUBSTRATE SYMBOLIZATION PAD AND PLATING AT BOTTOM OF DATUMS B AND C HOLES ARE ELECTRICALLY CONNECTED TO VSS PLANE WITHIN THE SUBSTRATE
- 4 BOUNDARY MIRRORS SURROUNDING THE DMD ACTIVE AREA
- 5 MAXIMUM ENCAPSULANT PROFILE SHOWN
- 6 ENCAPSULANT ALLOWED ON THE SURFACE OF THE CERAMIC IN THE AREA SHOWN IN VIEW B (SHEET 2). ENCAPSULANT SHALL NOT EXCEED 0.200 THICKNESS MAXIMUM.
- 7 SUBSTRATES PLATED WITH Ni/Au SHALL HAVE THE THREE-DIGIT NUMERICAL MARKING IN THE AREA ABOVE THE SYMBOLIZATION PAD. SUBSTRATES PLATED WITH Ni/Pd/Au SHALL HAVE THE MARKING IN THE AREA BELOW THE SYMBOLIZATION PAD.

© COPYRIGHT 2014 TEXAS INSTRUMENTS UN-
PUBLISHED, ALL RIGHTS RESERVED.

REVISIONS

REV	DESCRIPTION	DATE	APPROVED
A	ECO 2146754, INITIAL RELEASE	11/18/2014	M. AVERY
B	ECO 2147303, ADD GLASS DIMS	12/18/2014	F.ARMSTRONG
C	ECO 2149265, CHG ARRAY TO 1528 ROWS	03/17/2015	F.ARMSTRONG
D	ECO 2156970, CHG NUMERICAL IDENTIFIER TO 317	03/17/2016	F. ARMSTRONG

3 PLACES INDICATED

DATUM PLANE 'F'

SEE VIEW E (SHEET 3)
FOR WINDOW AND ACTIVE
ARRAY DIMENSIONS

DATUM PLANE 'E'

F - SHT. 4

E

C

F - SHT. 4

2.014±0.150

(φ3.065) B

4.108±0.150

(14.900)

28.916±0.150

35.000±0.250

INCIDENT LIGHT

SUBSTRATE

ENCAPSULANT

0.800 MAX

WINDOW

WINDOW APERTURE

1.100±0.050

1.803±0.077

1.050±0.080

ACTIVE ARRAY

3 PLACES
INDICATED
(SHEET 2)

(0.753)

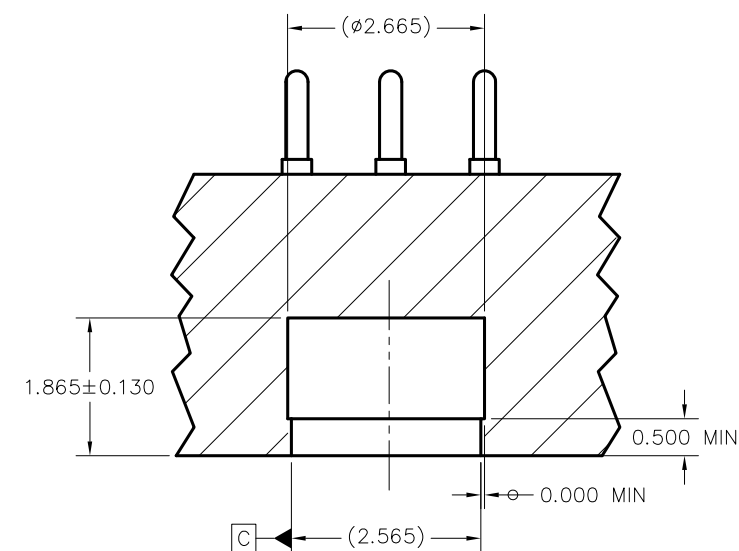
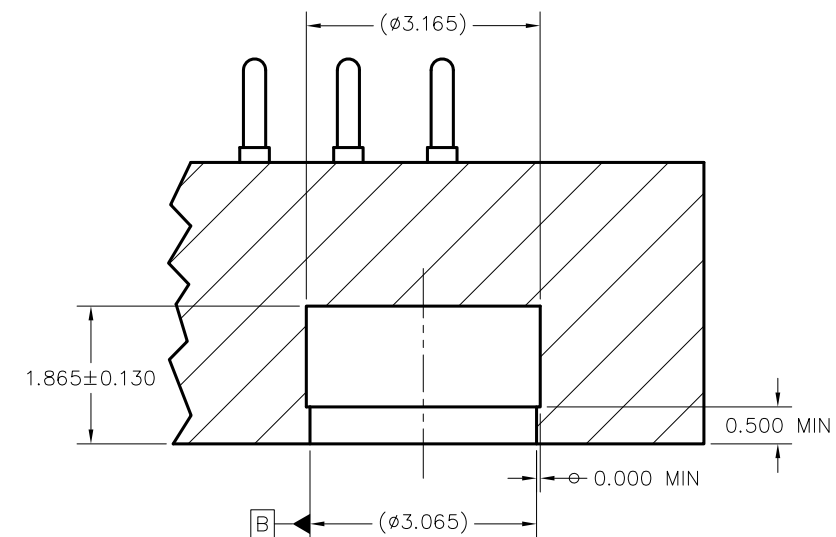
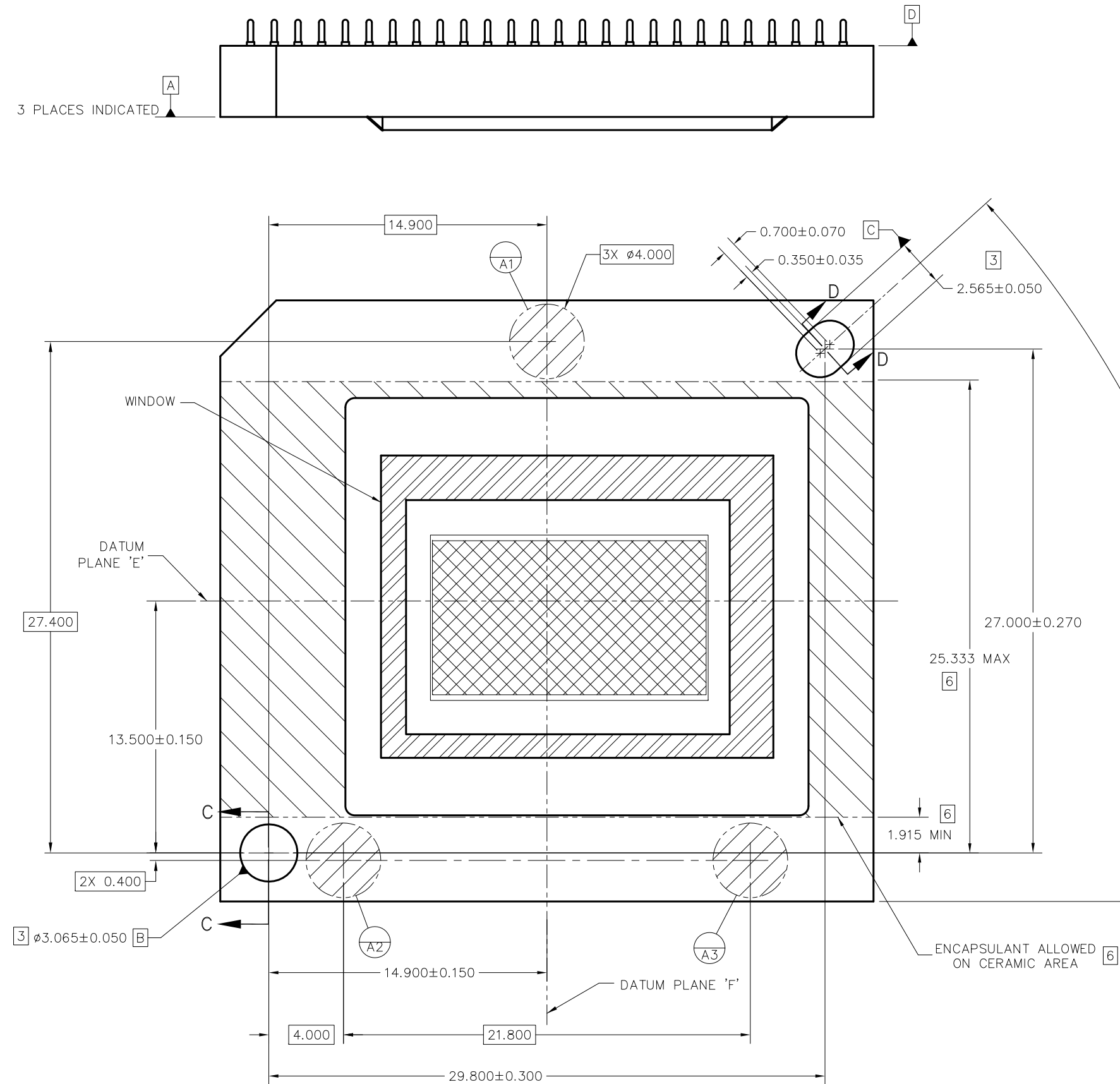
3.810±0.240

350X 1.400±0.100

(φ0.305)

SECTION A-A
SCALE 20/1

QTY	ITEM NO	PART OR IDENTIFYING NUMBER	NOMENCLATURE OR DESCRIPTION	NOTES
PARTS LIST				
OWN	M. AVERY	DATE	11/18/2014	
ENGR	F. ARMSTRONG	DATE	11/18/2014	
QA	P. KONRAD	DATE	12/04/2014	
E	CARPENTER	DATE	12/04/2014	
CQE	M. DORAK	DATE	12/04/2014	
S	SUSI	DATE	12/04/2014	
UNLESS OTHERWISE SPECIFIED DIMENSIONS ARE IN MILLIMETERS TOLERANCES: ANGLES ± 1° 2 PLACE DECIMALS ±0.25 3 PLACE DECIMALS ±0.50		REMOVE ALL BURRS AND SHARP EDGES INTERPRET DIMENSIONS IN ACCORDANCE WITH ASME Y14.5-1994 DIMENSIONAL LIMITS APPLY BEFORE PROCESSES PARENTHEICAL INFO FOR REF ONLY		
THIRD ANGLE PROJECTION	NONE	0314DA		
	NEXT ASSY	USED ON		
	APPLICATION			
TEXAS INSTRUMENTS Dallas, Texas		ICD, MECHANICAL, DMD .66 UHD HB MTRP 2XLVDS SERIES 610 (FYG PACKAGE)		
SIZE	D	DRAWING NO	2514366	REV D
SCALE	4/1	SHEET	1 OF 4	



8

7

6

5

4

3

DWG NO

2514366

SH

4

1

D

D

C

C

B

B

A

A

3 PLACES INDICATED

DATUM PLANE 'E'

 10.000 ± 0.250 11.100 ± 0.250

SEE DETAIL G

350X $\phi 0.305^{+0.050}_{-0.025}$ PINS

ϕ	$\phi 0.500$	D	E	F
ϕ	$\phi 0.250$	D		

[3] SYMBOLIZATION PAD

VIEW F-F (SHEET 1)
PINS AND SYMBOLIZATION PAD
SCALE 8/1

(35.000)

 $25 \times 1.270 = 31.750$

15.875

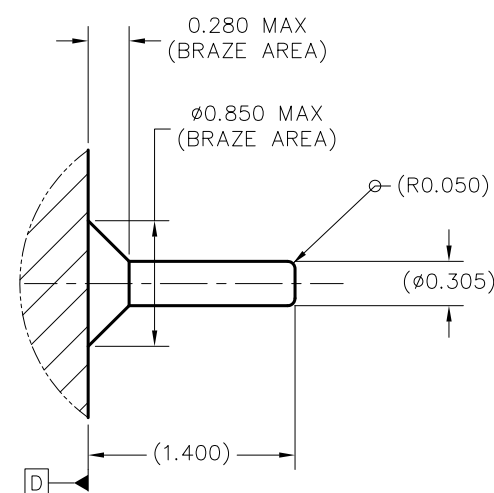
DATUM PLANE 'F'

(PINS A1, A2, A12, A13, A14,
A15, A26, B1, AA1, AA12, AA13,
AA14, AA15, AA26 OMITTED)A
B
C
D
E
F
G
H
J
K
L
M
N
P
R
T
U
V
W
X
Y
Z
AA $22 \times 1.270 = 27.940$

13.970

(2.130)

(32.200)

DETAIL G (350 PLACES)
PIN & BRAZE DIMENSIONS
SCALE 40/1

DWN DATE

ISSUE DATE

SIZE

D

SCALE 4/1

DRAWING NO

2514366

REV

D

SHEET 4