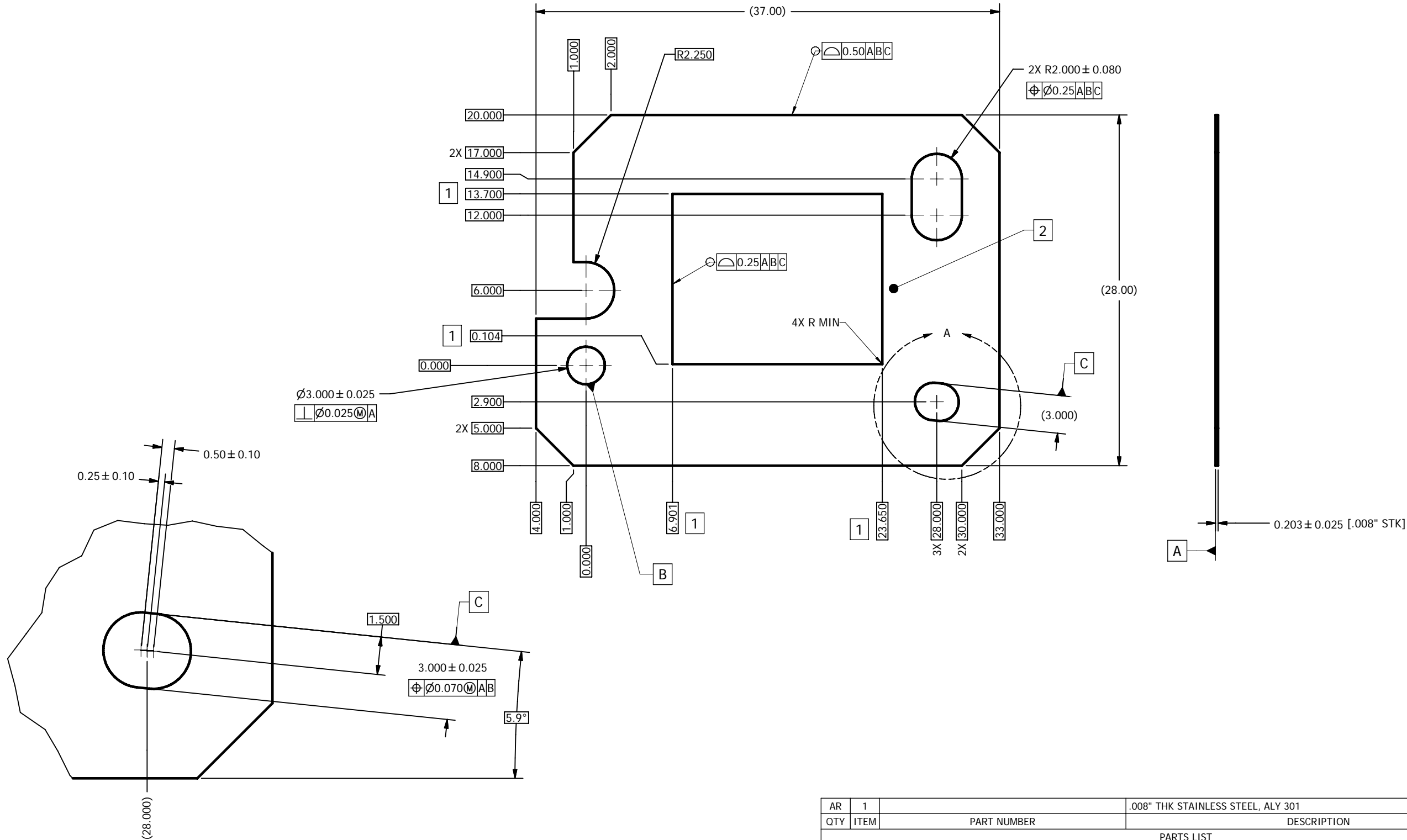


NOTES UNLESS OTHERWISE SPECIFIED:


- 1 EXAMPLE DIMENSION - EXACT DIMENSION WILL VARY BASED UPON THE OPTICAL DESIGN AND ARRAY SIZE
- 2 SURFACE CONDITION AND FINISH NEAR OPENING VERY CRITICAL FOR OPTICAL PERFORMANCE

© COPYRIGHT 2008 TEXAS INSTRUMENTS  
UN-PUBLISHED. ALL RIGHTS RESERVED.

REVISIONS			
REV	DESCRIPTION	DATE	BY
A	ECO 2089863 - INITIAL RELEASE	5/28/2008	DH



DETAIL A  
SCALE 12 : 1

AR	1	.008" THK STAINLESS STEEL, ALY 301		
QTY	ITEM	PART NUMBER	DESCRIPTION	NOTES
PARTS LIST				
DRAWN HOLAMON		DATE 4/30/2008	 TEXAS INSTRUMENTS <small>Dallas Texas</small>	
ENGINEER J. MCKINLEY		5/28/2008		
QA/CE				
CM				
APPROVED J. MCKINLEY			5/28/2008	
SIZE D		SCALE 6:1	DWG NO 2509646	REV A

2509479	0314RD
NEXT ASSY	USED ON
APPLICATION	

- UNLESS OTHERWISE SPECIFIED
- DIMENSIONS ARE IN MILLIMETERS
  - TOLERANCES:
    - ANGLES ± 1°
    - 2 PLACE DECIMALS ± 0.25
    - 1 PLACE DECIMALS ± 0.50
  - DIMENSIONAL LIMITS APPLY BEFORE PROCESSES
  - INTERPRET DIMENSIONS IN ACCORDANCE WITH ASME Y14.5M-1994
  - REMOVE ALL BURRS AND SHARP EDGES
  - PARENTHETICAL INFORMATION FOR REFERENCE ONLY

TITLE  
APERTURE, PIN GUIDE, SERIES 450