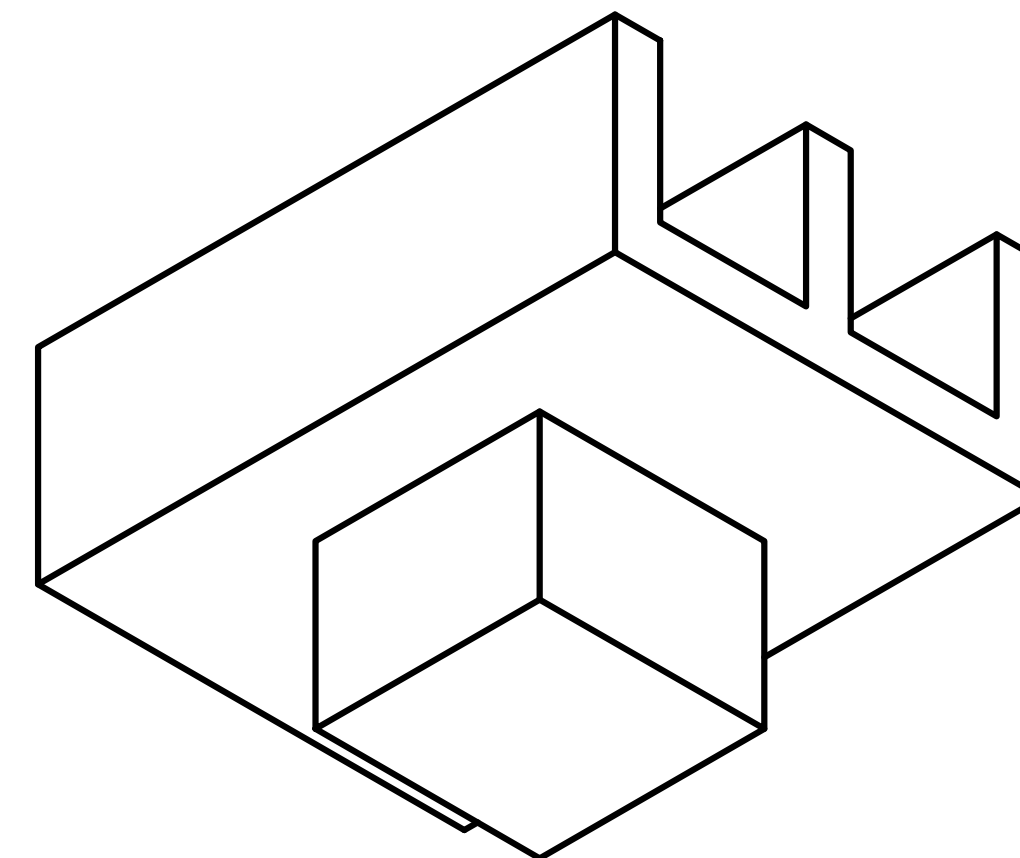
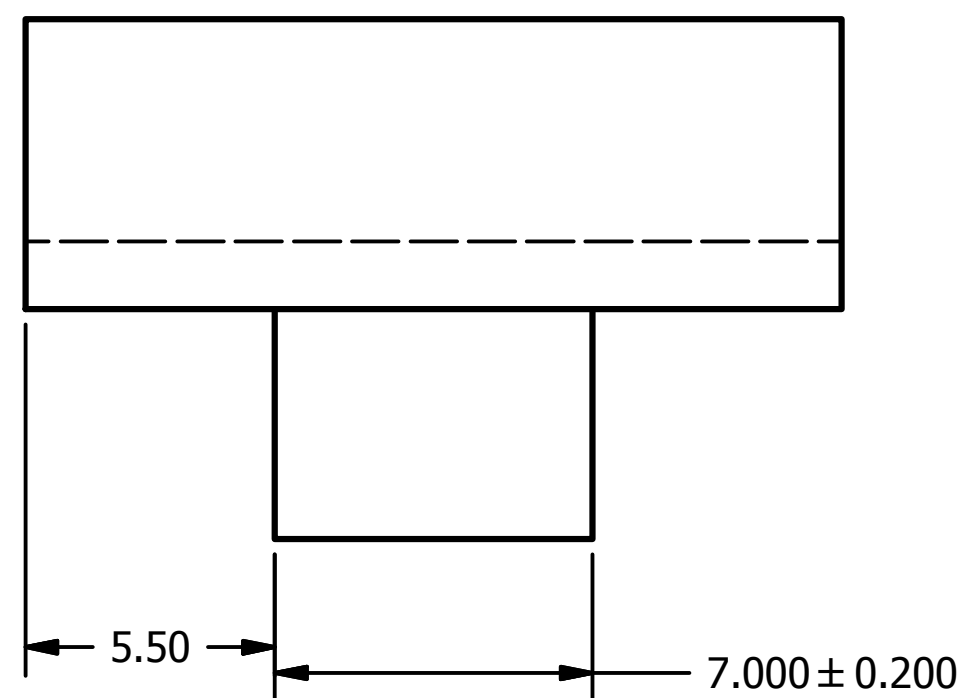
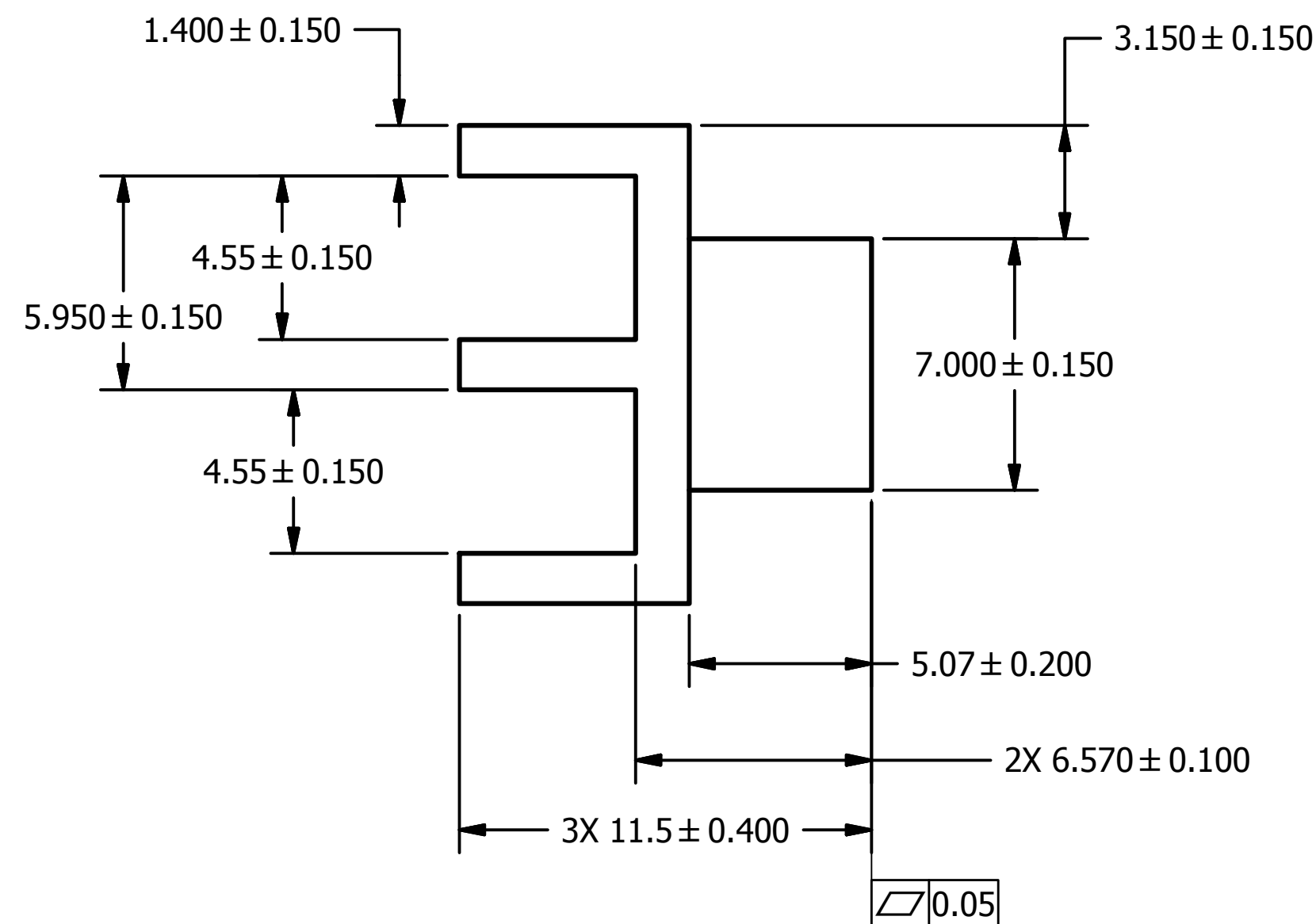
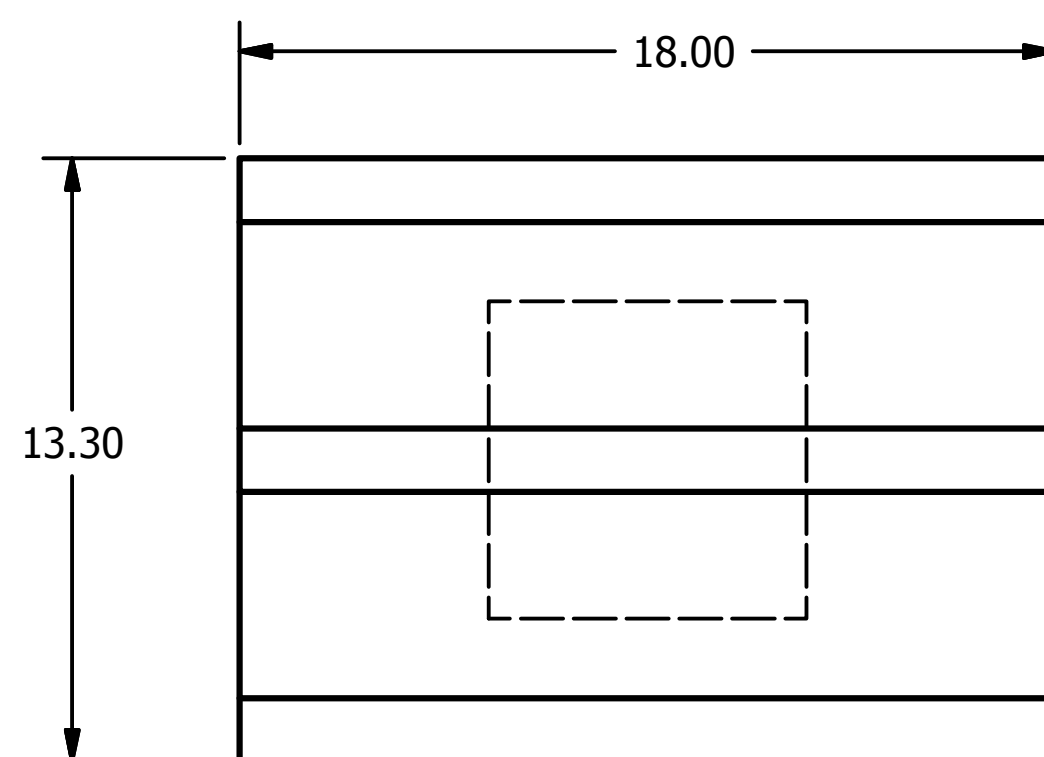



NOTES UNLESS OTHERWISE SPECIFIED:

1. THIS DESIGN IS REPRESENTATIVE OF THE FEATURES TO ATTACH THE HEATSINK. A THERMAL ANALYSIS AND TESTING OF THE SYSTEM SHOULD BE DONE TO DETERMINE THE THERMAL PERFORMANCE CHARACTERISTICS REQUIRED.

© COPYRIGHT 2010 TEXAS INSTRUMENTS
UN-PUBLISHED, ALL RIGHTS RESERVED.

REVISIONS			
REV	DESCRIPTION	DATE	BY
A	INITIAL RELEASE	07-02-2010	JTM



AR	1			ALUMINUM ALY, 6063 - T5 OR T6					
QTY	ITEM	PART NUMBER		DESCRIPTION				NOTES	
PARTS LIST									
		<div>UNLESS OTHERWISE SPECIFIED</div> <div>● DIMENSIONS ARE IN MILLIMETERS</div> <div>● TOLERANCES:</div> <div> ANGLES ± 1°</div> <div> 2 PLACE DECIMALS ± 0.25</div> <div> 1 PLACE DECIMALS ± 0.50</div> <div>● DIMENSIONAL LIMITS APPLY BEFORE PROCESSES</div> <div>● INTERPRET DIMENSIONS IN ACCORDANCE WITH ASME Y14.5M-1994</div> <div>● REMOVE ALL BURRS AND SHARP EDGES</div> <div>● PARENTHETICAL INFORMATION FOR REFERENCE ONLY</div>		DRAWN		DATE		<div></div> <div>TITLE</div> <div>HEATSINK, CONCEPT #2</div>	
				J. McKINLEY		7/2/2010			
				ENGINEER					
				McKINLEY		7/2/2010			
				QA/CE					
				CM					
0314RD				TITLE					
USED ON				HEATSINK, CONCEPT #2					
LOCATION				SIZE	DWG NO		REV		
				D	2511350		A		
				SCALE	6:1		SHEET 1 OF 1		

