

NOTES: UNLESS OTHERWISE SPECIFIED:

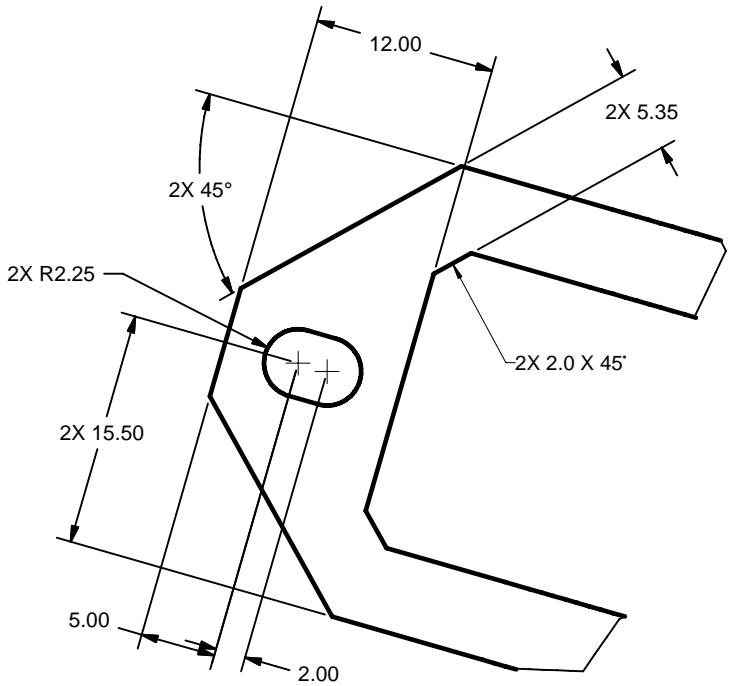
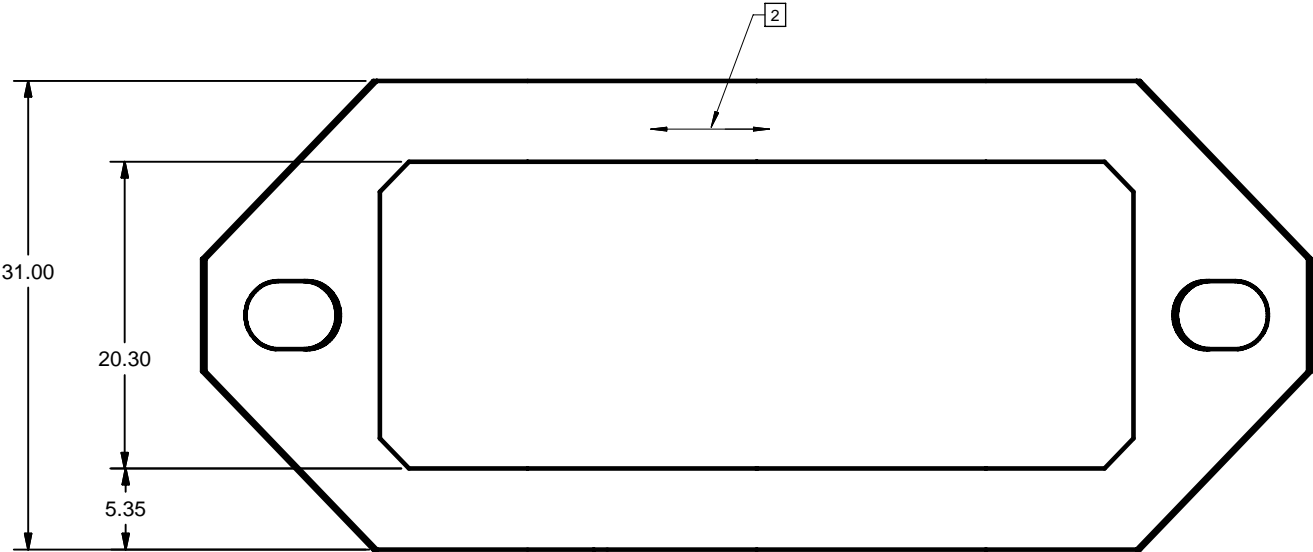
1 BURR SIDE FOR ALL PERIPHERY AND PIERCED HOLES

2 GRAIN DIRECTION

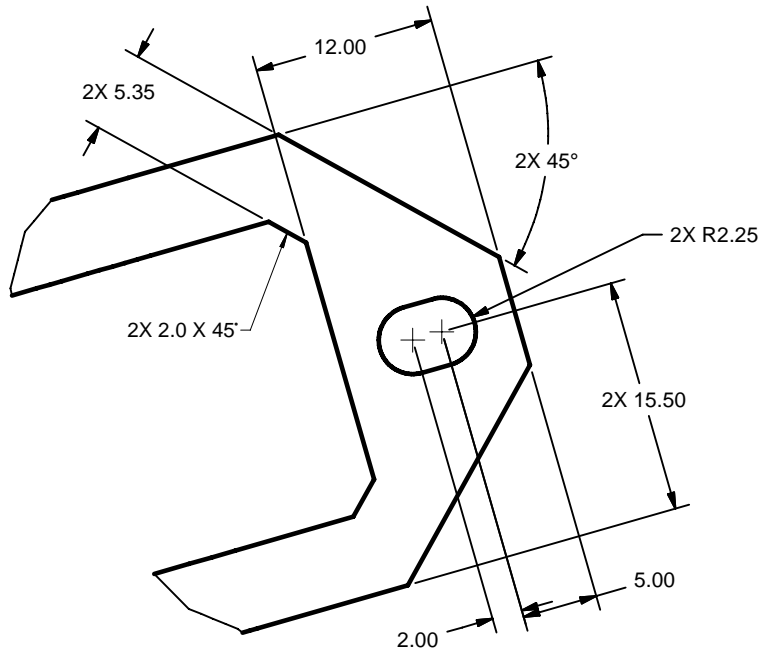
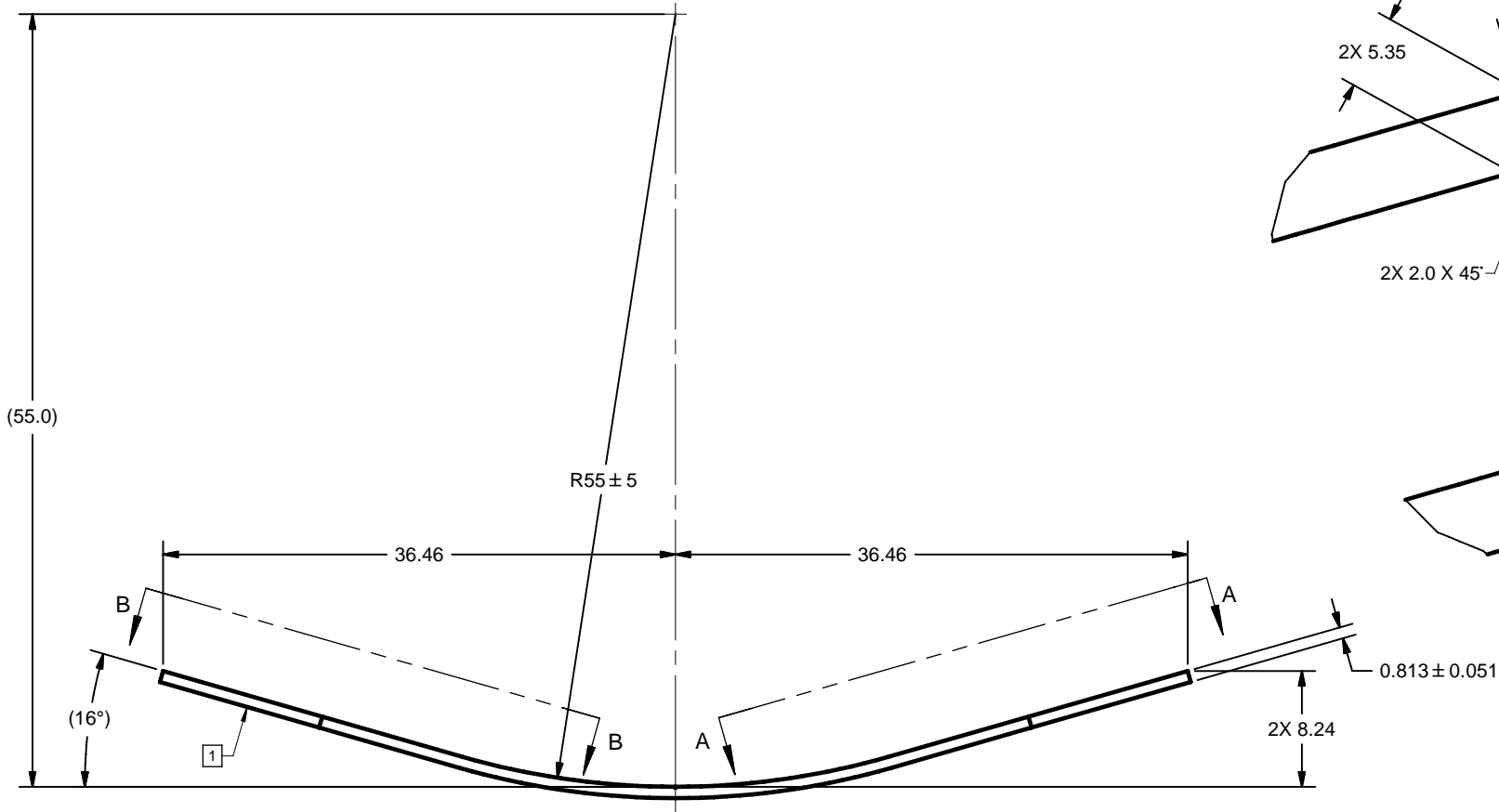
3. NO VISIBLE CRACKING PERMITTED

© COPYRIGHT 2006 TEXAS INSTRUMENTS
UN-PUBLISHED, ALL RIGHTS RESERVED.

REV		DESCRIPTION	DATE	UPDATED BY
A	ECO	#2066554 - INITIAL RELEASE	02-22-2006	JTM




VIEW B-B



VIEW A-A

AR	1		0.813mm [.032"] THK 301 STAINLESS STEEL SHEET, 1/2 HARD	
-1 QTY	ITEM	PART NUMBER	DESCRIPTION	NOTES

		<div>UNLESS OTHERWISE SPECIFIED</div> <ul style="list-style-type: none">● DIMENSIONS ARE IN MILLIMETERS● TOLERANCES: <div>ANGLES ± 1°</div><div>2 PLACE DECIMALS ± 0.25</div><div>1 PLACE DECIMALS ± 0.50</div>● DIMENSIONAL LIMITS APPLY BEFORE PROCESSES● INTERPRET DIMENSIONS IN ACCORDANCE WITH ASME Y14.5M-1994● REMOVE ALL BURRS AND SHARP EDGES● PARENTHETICAL INFORMATION FOR REFERENCE ONLY	DRAWN McKINLEY	DATE 2/13/2006	<div> TEXAS INSTRUMENTS Dallas Texas</div>					
			ENGINEER J. McKINLEY	3/1/2006		TITLE FLAT SPRING, 63mm SPACING				
			QA/CE C. LOWELL	3/1/2006						
			CM D. HOLAMON	3/3/2006						
2507473	0314RD					SIZE D	DWG NO 2507495	REV A		
2507472	0314RD									
NEXT ASSY	USED ON					APPROVED J. McKINLEY	3/1/2006	SCALE 4:1		SHEET 1 OF 1
APPLICATION										