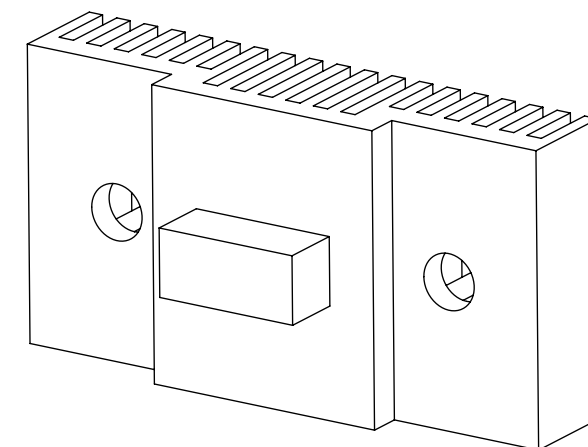
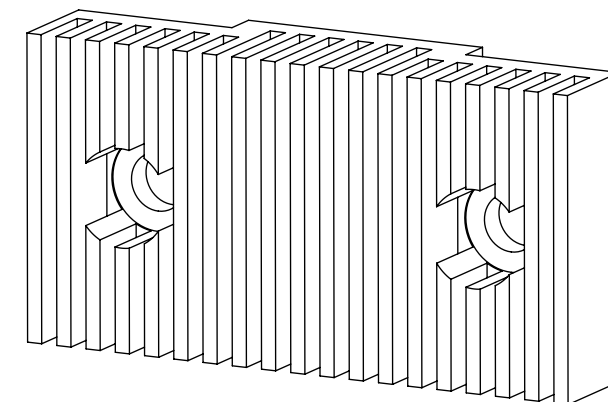
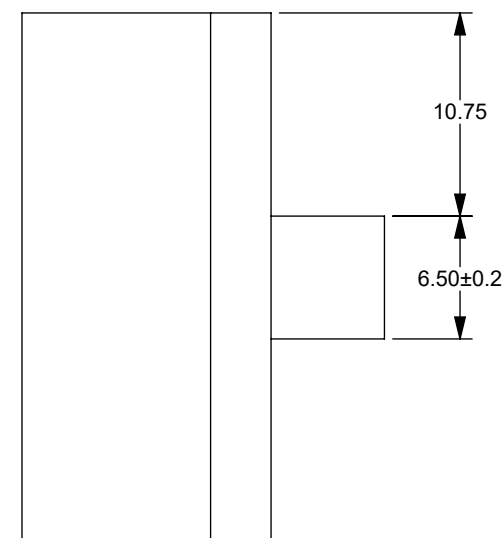



REV	DESCRIPTION	DATE	BY
A	INITIAL RELEASE	1/20/17	JTM
B	ADDED SERIES 317 TO TITLE	12/31/2018	JTM



SECTION A-A

AR	1		ALUMINUM ALY	
QTY	ITEM	PART NUMBER	DESCRIPTION	Notes

		<p>UNLESS OTHERWISE SPECIFIED</p> <ul style="list-style-type: none">● DIMENSIONS ARE IN MILLIMETERS● TOLERANCES: ANGLES $\pm 1^\circ$ 2 PLACE DECIMALS ± 0.25 1 PLACE DECIMALS ± 0.50● DIMENSIONAL LIMITS APPLY BEFORE PROCESSES● INTERPRET DIMENSIONS IN ACCORDANCE WITH ASME Y14.5M-1994● REMOVE ALL BURRS AND SHARP EDGES● PARENTHETICAL INFO FOR REF ONLY	DWN J. McKINLEY		DATE 12/16/2016	<div>TEXAS INSTRUMENTS</div> <div>HEAT SINK SERIES 316 AND 317</div>			
			Engr						
			CQE/QA						
			CM						
2515387	0314RD					SIZE B		DWG NO 2515389	REV B
NEXT ASSY	USED ON	APPLICATION		Apprvd McKINLEY	1/20/2017	SCALE 2:1			SHEET 1 OF 1

