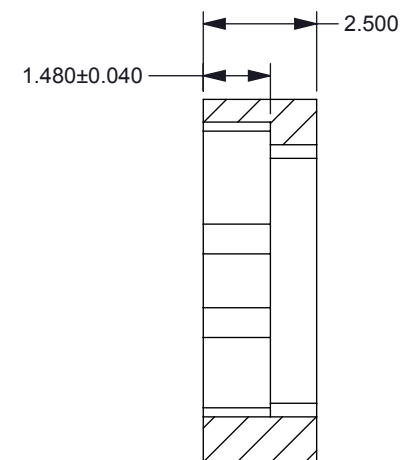


REVISIONS			
REV	DESCRIPTION	DATE	BY
A	INITIAL RELEASE	11/19/2012	JTM



A 3D perspective drawing of a rectangular metal plate. The plate has a central longitudinal slot. On the left side of the slot, there is a semi-circular cutout. On the right side of the slot, there is a rectangular protrusion. At the far left end of the plate, there is a circular hole. At the far right end of the plate, there is another circular hole. The drawing is a line art representation with no shading.

AR	1		ALUMINUM PLATE, 6061-T6	
QTY	ITEM	PART NUMBER	DESCRIPTION	Notes

		<div>UNLESS OTHERWISE SPECIFIED</div> <ul style="list-style-type: none">DIMENSIONS ARE IN MILLIMETERSTOLERANCES: ANGLES ±1° 2 PLACE DECIMALS ±0.25 1 PLACE DECIMALS ±0.50DIMENSIONAL LIMITS APPLY BEFORE PROCESSESINTERPRET DIMENSIONS IN ACCORDANCE WITH ASME Y14.5M-1994REMOVE ALL BURRS AND SHARP EDGESPARENTHETICAL INFO FOR REF ONLY	<div>DWN j. MCKINLEY</div> <div>DATE 11/13/2012</div>		<div><div><div></div><div>TEXAS INSTRUMENTS</div></div><div>INTERFACE, SERIES 244 CONCEPT #1</div></div>				
			<div>Engr</div>						
			<div>CQE/QA</div>						
			<div>CM</div>		<div>SIZE B</div>		<div>DWG NO 2512925</div>		<div>REV A</div>
0314RD	2512917				<div>Apprvd MCKINLEY</div> <div>11/19/2012</div>		<div>SCALE 5:1</div>		<div>SHEET 1 OF 1</div>
NEXT ASSY		USED ON							
APPLICATION									

SW-2012a