

8

7

6

5

4

3

DWG NO 2516659 SH 1

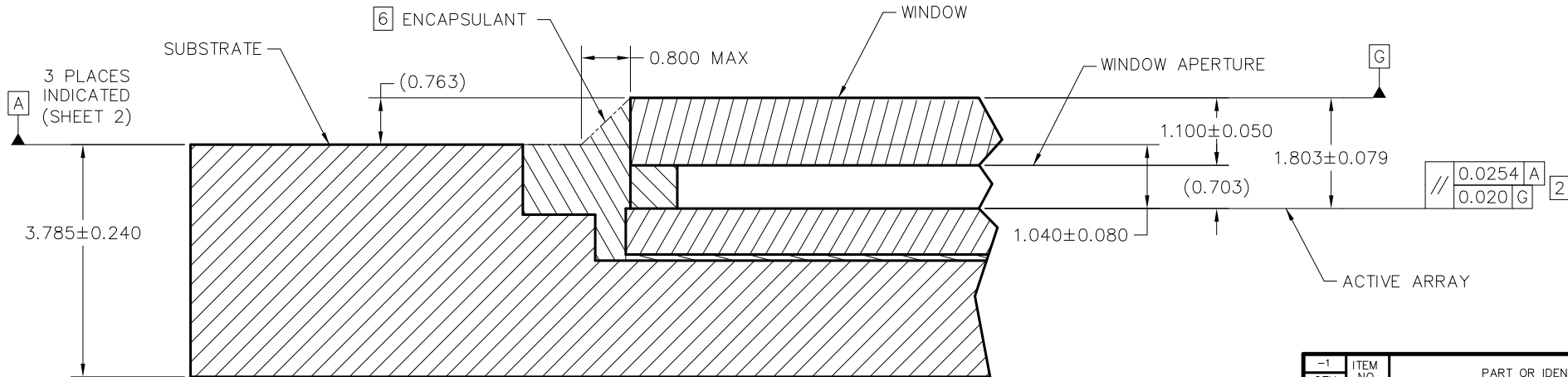
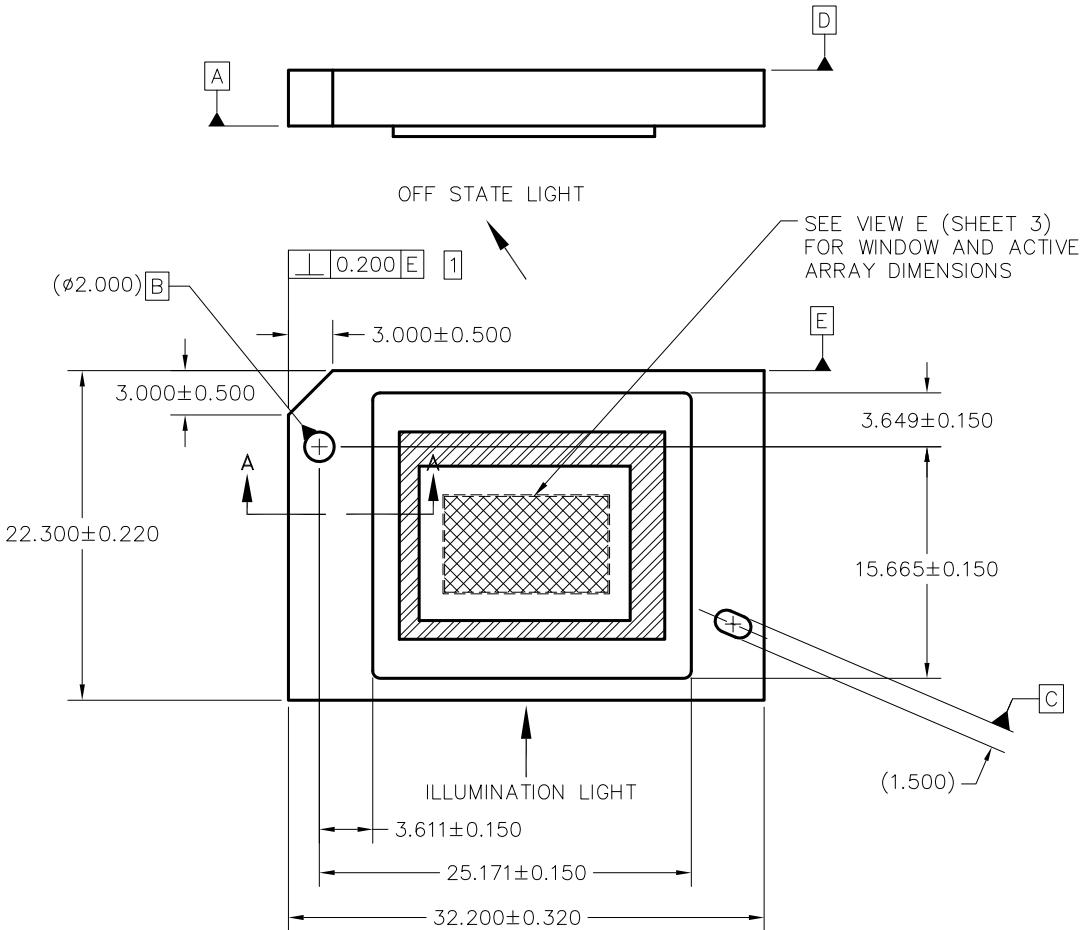
1

NOTES: UNLESS OTHERWISE SPECIFIED:

- 1
- SUBSTRATE EDGE PERPENDICULARITY TOLERANCE APPLIES TO ENTIRE SURFACE
- 2
- DIE PARALLELISM TOLERANCE APPLIES TO DMD ACTIVE ARRAY ONLY
- 3
- ROTATION ANGLE OF DMD ACTIVE ARRAY IS A REFINEMENT OF THE LOCATION TOLERANCE AND HAS A MAXIMUM ALLOWED VALUE OF 0.8 DEGREES
- 4
- SUBSTRATE SYMBOLIZATION PAD, AND PLATING AT BOTTOM OF DATUMS B AND C HOLES TO BE ELECTRICALLY CONNECTED TO VSS PLANE WITHIN THE SUBSTRATE
- 5
- BOUNDARY MIRRORS SURROUNDING THE DMD ACTIVE AREA
- 6
- MAXIMUM ENCAPSULANT PROFILE SHOWN
- 7
- ENCAPSULANT ALLOWED ON THE SURFACE OF THE CERAMIC IN THE AREA SHOWN IN VIEW B (SHEET 2). ENCAPSULANT SHALL NOT EXCEED 0.200 THICKNESS MAXIMUM.
- 8
- SUBSTRATES PLATED WITH Ni/Au SHALL HAVE THE THREE-DIGIT NUMERICAL MARKING IN THE AREA TO THE LEFT OF THE SYMBOLIZATION PAD. SUBSTRATES PLATED WITH Ni/Pd/Au SHALL HAVE THE MARKING IN THE AREA TO THE RIGHT OF THE SYMBOLIZATION PAD.

© COPYRIGHT 2019 TEXAS INSTRUMENTS UN-  
PUBLISHED, ALL RIGHTS RESERVED.

REVISIONS			
REV	DESCRIPTION	DATE	APPROVED
A	ECO 2181188, INITIAL RELEASE	05/07/2019	F. ARMSTRONG



SECTION A-A  
SCALE 20/1

-1 QTY		ITEM NO	PART OR IDENTIFYING NUMBER	NOMENCLATURE OR DESCRIPTION	NOTES
PARTS LIST					
DWN	F. ARMSTRONG	DATE	05/07/19	 TEXAS INSTRUMENTS Dallas, Texas	
ENGR	F. ARMSTRONG	DATE	05/07/19		
QA	P. KONRAD	DATE	05/14/19		
CQE	M. DORAK	DATE	05/14/19		
UNLESS OTHERWISE SPECIFIED DIMENSIONS ARE IN MILLIMETERS TOLERANCES: ANGLES ± 1° 2 PLACE DECIMALS ±0.25 3 PLACE DECIMALS ±0.50 REMOVE ALL BURRS AND SHARP EDGES INTERPRET DIMENSIONS IN ACCORDANCE WITH ASME Y14.5-1994 DIMENSIONAL LIMITS APPLY BEFORE PROCESSES PARENTHEetical INFO FOR REF ONLY				ICD, MECHANICAL, DMD .50" MTRP 2xLVDS HB SERIES 410 (FXK PACKAGE)	
NONE				0314DA	REV A
NEXT ASSY				USED ON	SCALE 4/1
APPLICATION					SHEET 1 OF 4



8

7

6

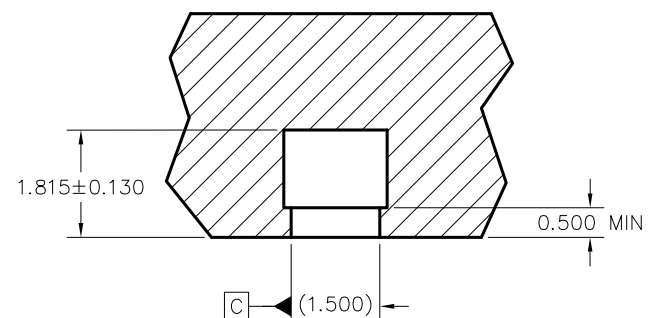
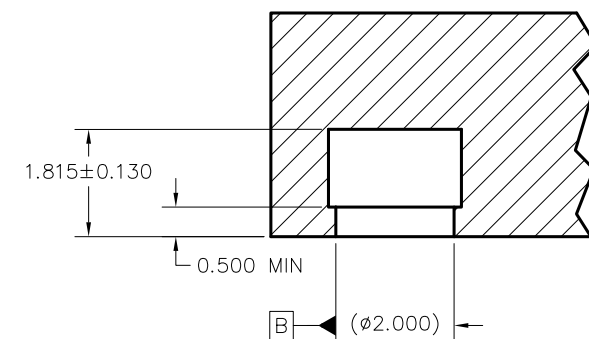
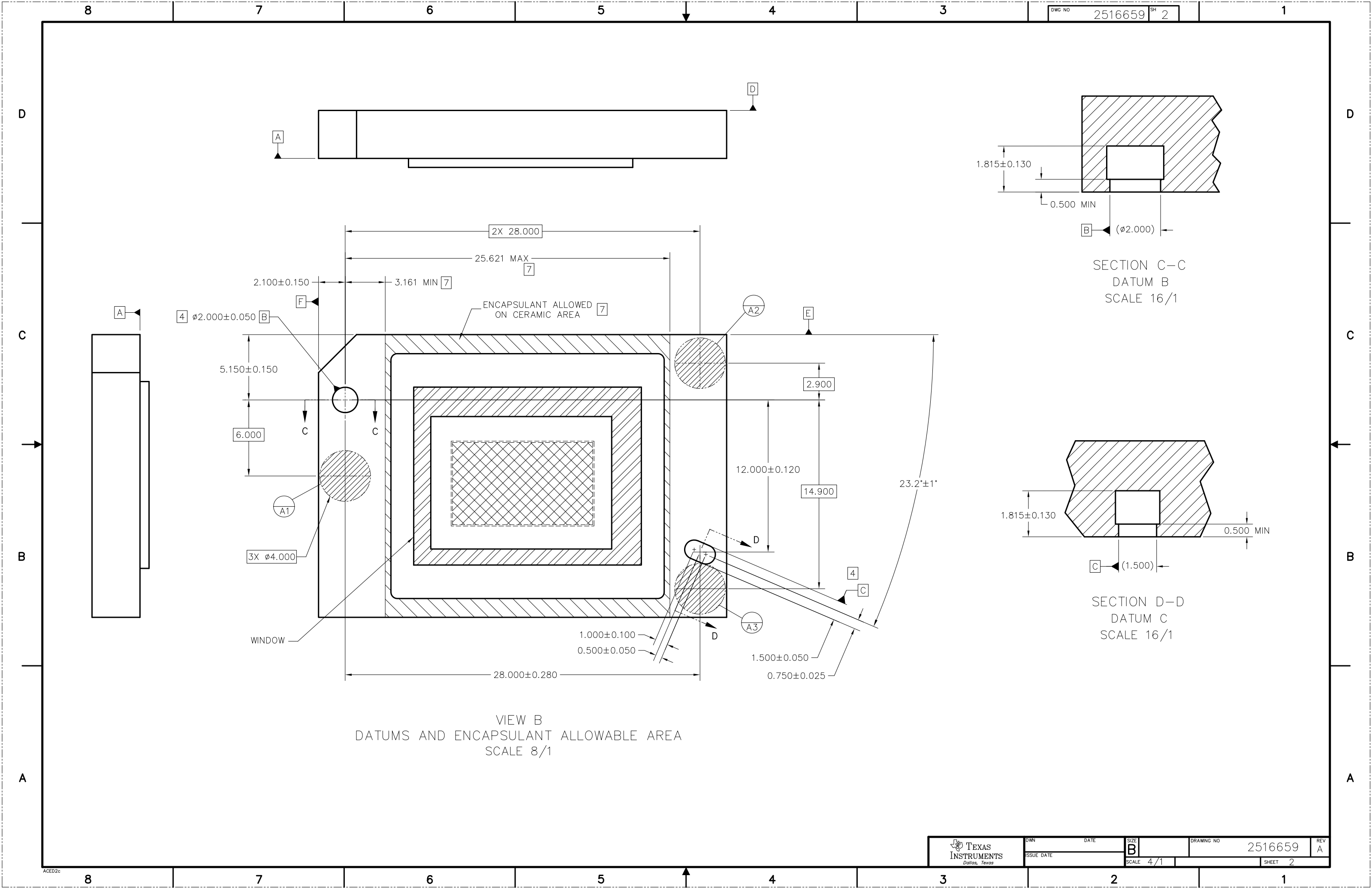
5

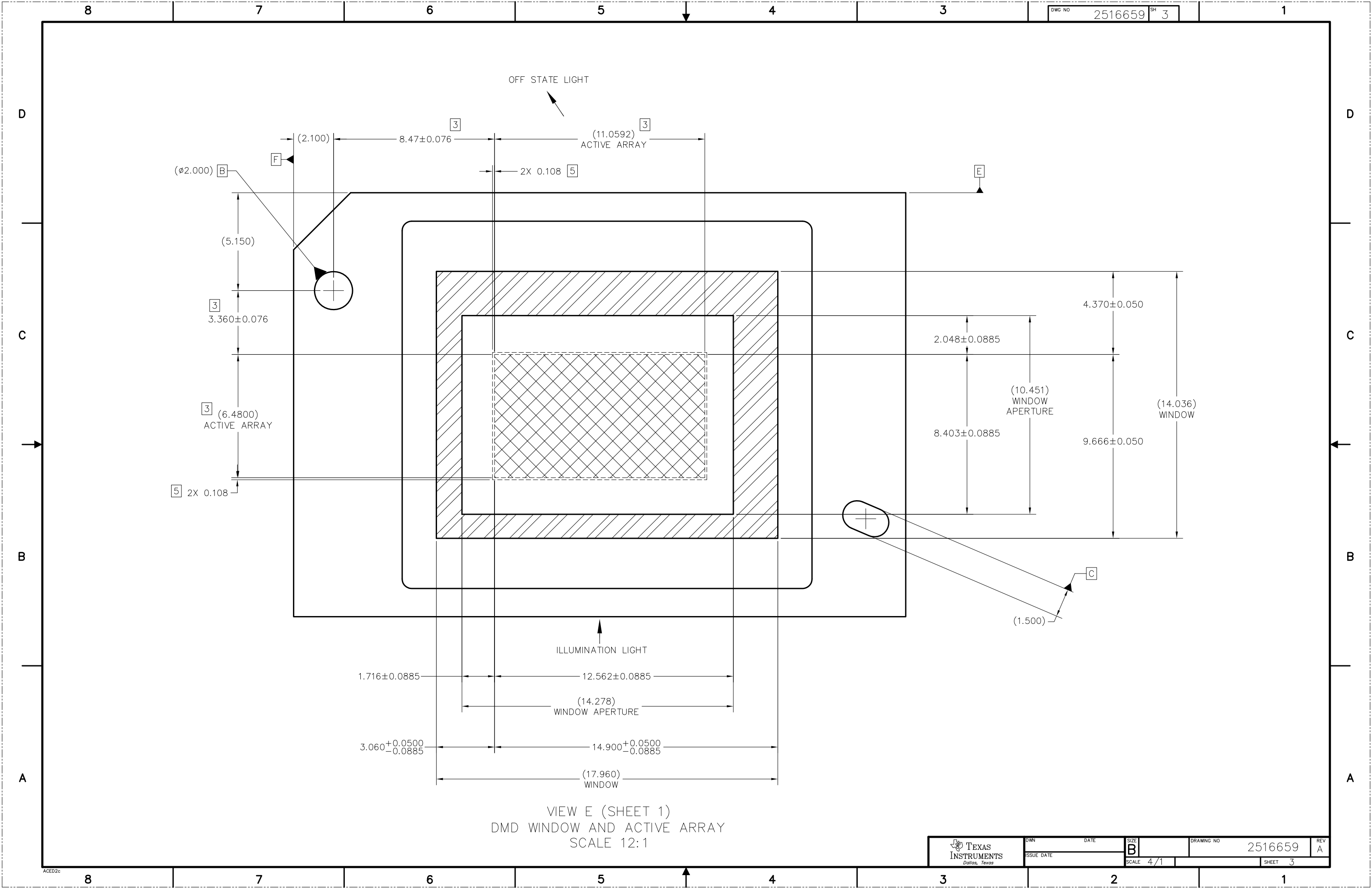
4

3

2

1





VIEW E (SHEET 1)  
DMD WINDOW AND ACTIVE ARRAY  
SCALE 12:1

