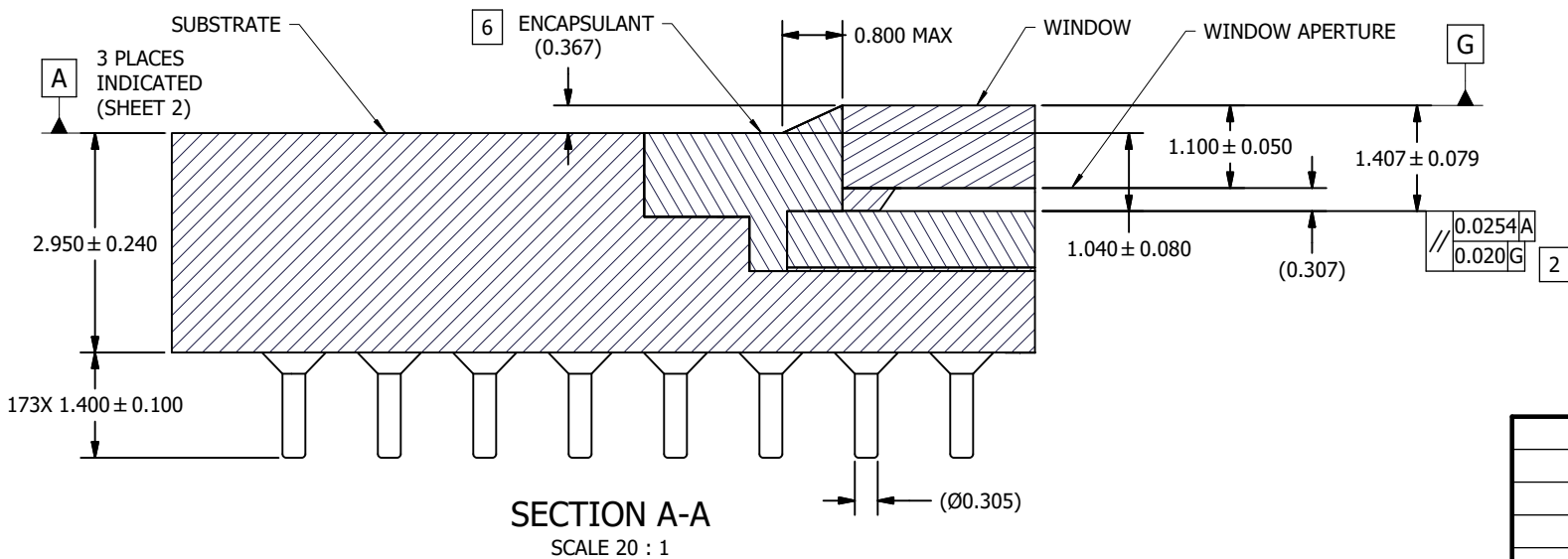
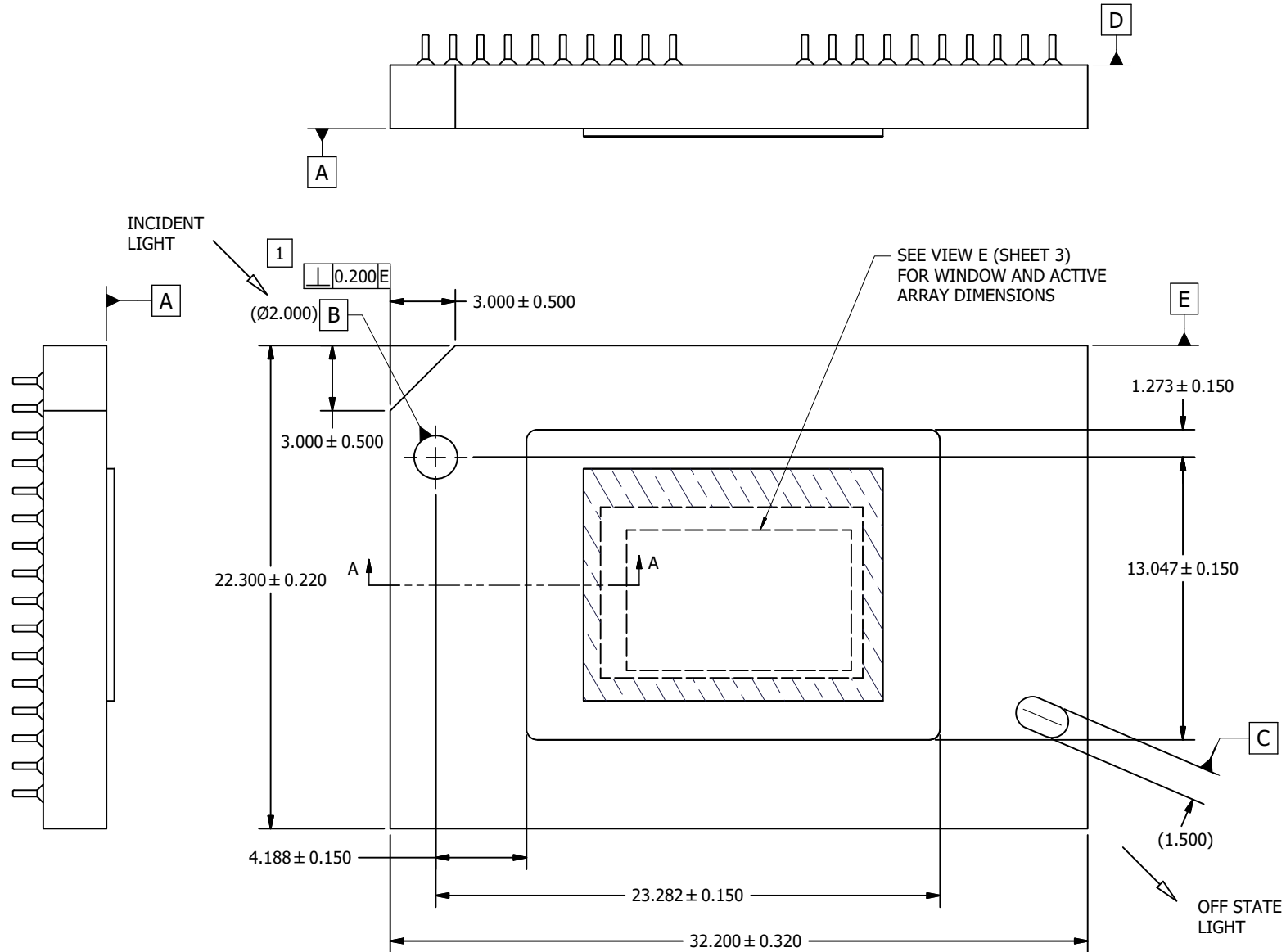


NOTES UNLESS OTHERWISE SPECIFIED:

- 1 SUBSTRATE EDGE PERPENDICULARITY TOLERANCE APPLIES TO ENTIRE SURFACE.
- 2 DIE PARALLELISM TOLERANCE APPLIES TO DMD ACTIVE ARRAY ONLY.
- 3 ROTATION ANGLE OF DMD ACTIVE ARRAY IS A REFINEMENT OF THE LOCATION TOLERANCE AND HAS A MAXIMUM VALUE OF 0.8 DEGREES.
- 4 SUBSTRATE SYMBOLIZATION PAD AND PLATING AT BOTTOM OF DATUMS B AND C HOLES TO BE ELECTRICALLY CONNECTED TO VSS PLANE WITHIN THE SUBSTRATE.
- 5 BOUNDARY MIRRORS SURROUNDING THE ACTIVE ARRAY.
- 6 MAXIMUM ENCAPSULANT PROFILE SHOWN.
- 7 ENCAPSULANT ALLOWED ON THE SURFACE OF THE CERAMIC IN THE AREA SHOWN IN VIEW B (SHEET 2). ENCAPSULATION SHALL NOT EXCEED 0.2 THICKNESS MAXIMUM.
- 8 SUBSTRATES PLATED WITH Ni/Au SHALL HAVE THE THREE-DIGIT NUMERICAL MARKING IN THE AREA ABOVE THE SYMBOLIZATION PAD. SUBSTRATES PLATED WITH Ni/Pd/Au SHALL HAVE THE MARKING IN THE AREA BELOW THE SYMBOLIZATION PAD.

© COPYRIGHT 2024 TEXAS INSTRUMENTS
UN-PUBLISHED, ALL RIGHTS RESERVED.

REVISIONS			
REV	DESCRIPTION	DATE	BY
A	ECO 2209564: INITIAL RELEASE	8/06/2024	JER



SECTION A-A
SCALE 20 : 1

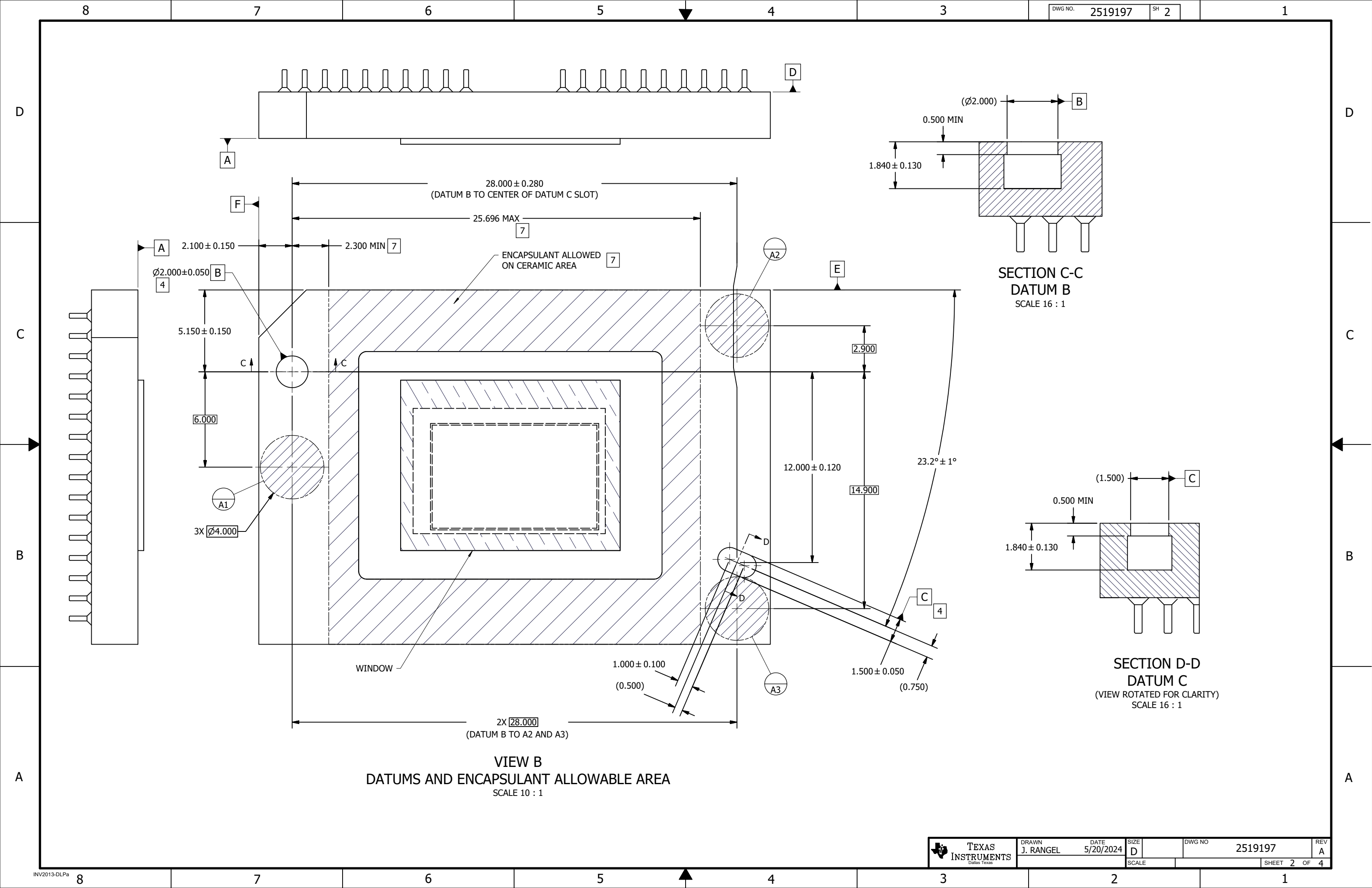


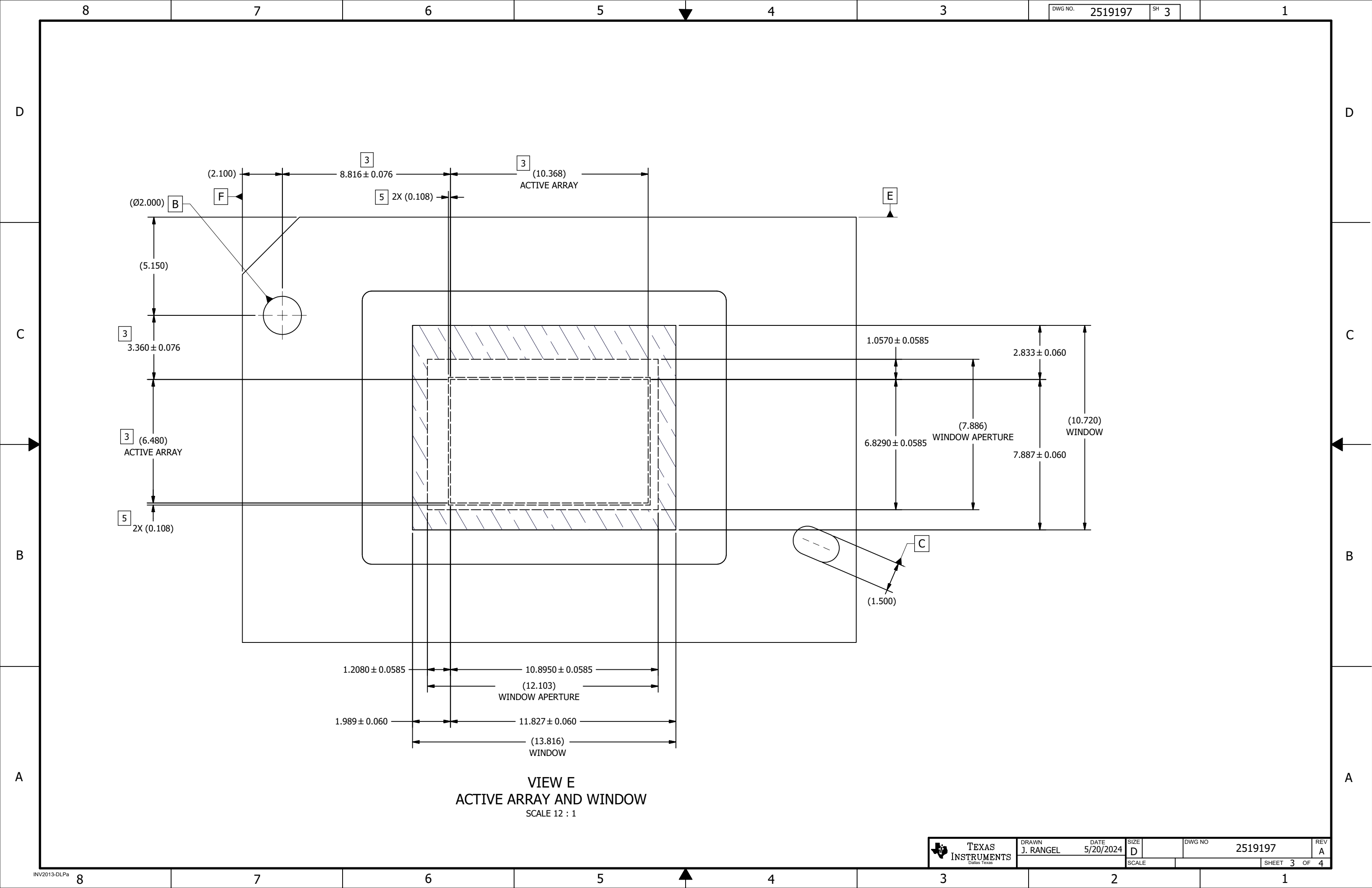
NONE	0314DA
NEXT ASSY	USED ON
APPLICATION	

UNLESS OTHERWISE SPECIFIED
• DIMENSIONS ARE IN MILLIMETERS
• TOLERANCES:
ANGLES ± 1°
2 PLACE DECIMALS ± 0.25
1 PLACE DECIMALS ± 0.50
• ~~DIMENSIONAL LIMITS APPLY BEFORE PROCESSES~~
• INTERPRET DIMENSIONS IN ACCORDANCE WITH ASME Y14.5M-1994
• ~~REMOVE ALL BURRS AND SHARP EDGES~~
• PARENTHETICAL INFORMATION FOR REFERENCE ONLY

DRAWN J. RANGEL	DATE 5/20/2024
ENGINEER H. GAGLIARDI	5/20/2024
QA/CE M. DORAK	8/6/2024
CM M. GARCIA	8/6/2024
APPROVED J. MCKINLEY	8/8/2024

TEXAS INSTRUMENTS Dallas, Texas	
TITLE ICD, MECHANICAL, DMD .48" SST subLVDS SERIES 460 (FXM PACKAGE)	
SIZE D	DWG NO 2519197
SCALE 7:1	SHEET 1 OF 4





D

C

B

A

D

C

B

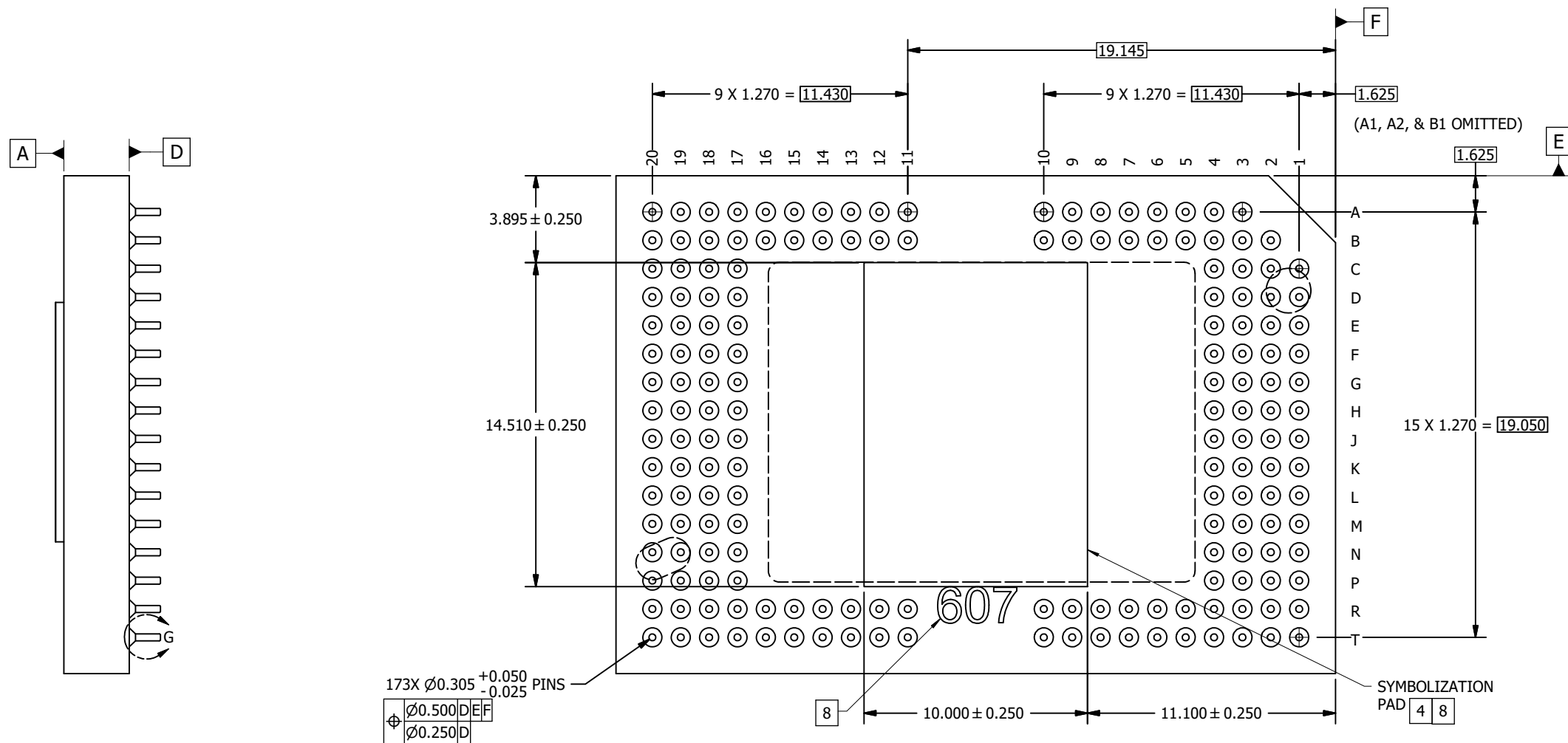
A

D

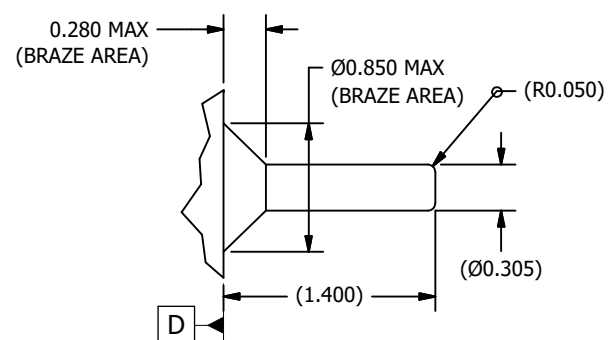
C

B

A



VIEW F
PINS AND SYMBOLIZATION PAD
SCALE 8 : 1



DETAIL G
PIN AND BRAZE DIMENSIONS
173 PLACES
SCALE 40 : 1