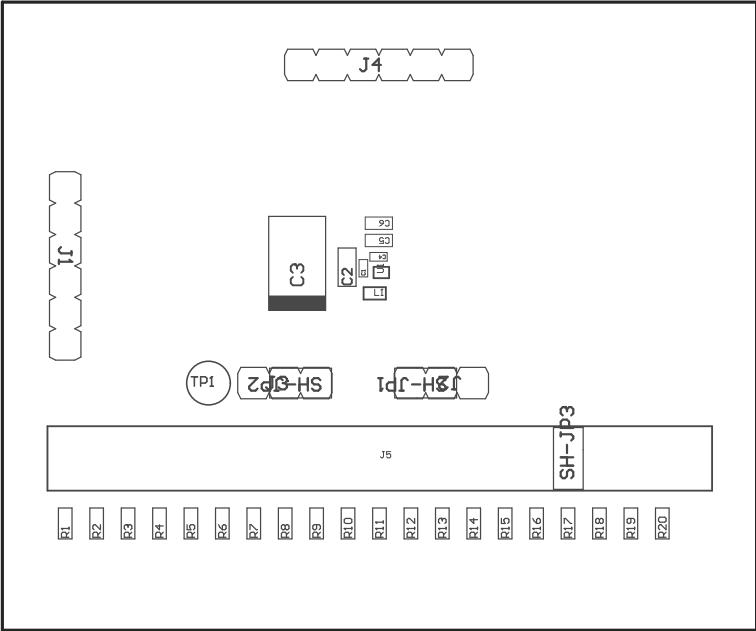
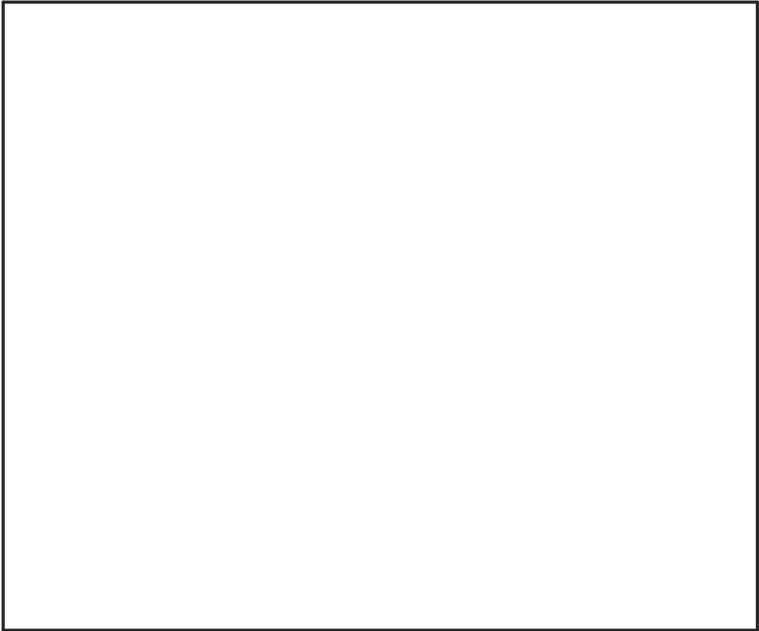


- ZZ1 ■ These assemblies are ESD sensitive, ESD precautions shall be observed.
- ZZ2 ■ These assemblies must be clean and free from flux and all contaminants. Use of no clean flux is not acceptable.
- ZZ3 ■ These assemblies must comply with workmanship standards IPC-A-610 Class 2, unless otherwise specified.
- ZZ4 ■ Install Shunt Jumper SH-JP1 onto header J2 Pin2,3.
- ZZ5 ■ Install Shunt Jumper SH-JP2 onto header J3 Pin2,3.
- ZZ6 ■ Install Shunt Jumper SH-JP3 onto header J5 Pin 9,10



COMPONENTS MARKED 'DNP' SHOULD NOT BE POPULATED.
ASSEMBLY VARIANT: 001

PCB VIEWED FROM TOP SIDE	BOARD #: BMC103	REV: A	SVN REV: Not in version control
	TID #: N/A		
PLOT NAME = Top Assembly Drawing	GENERATED : 3/16/2023 1:54:18 PM		TEXAS INSTRUMENTS



COMPONENTS MARKED 'DNP' SHOULD NOT BE POPULATED.
ASSEMBLY VARIANT: 001

PCB VIEWED FROM BOTTOM SIDE	BOARD #: BMC103	REV: A	SVN REV: Not in version control
	TID #: N/A		
PLOT NAME = Bottom Assembly Drawing	GENERATED : 3/16/2023 1:54:37 PM		TEXAS INSTRUMENTS