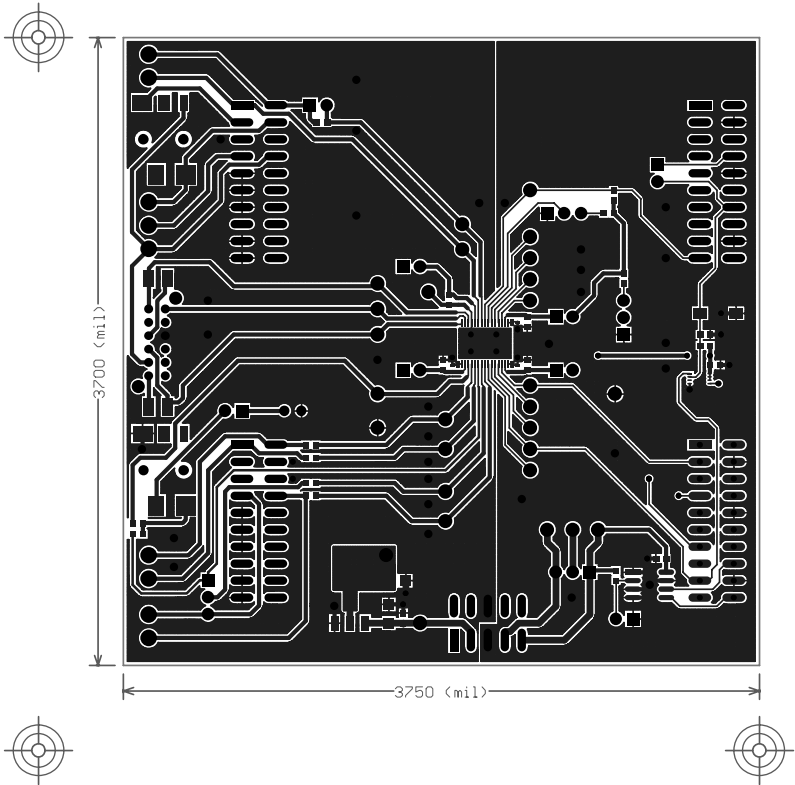
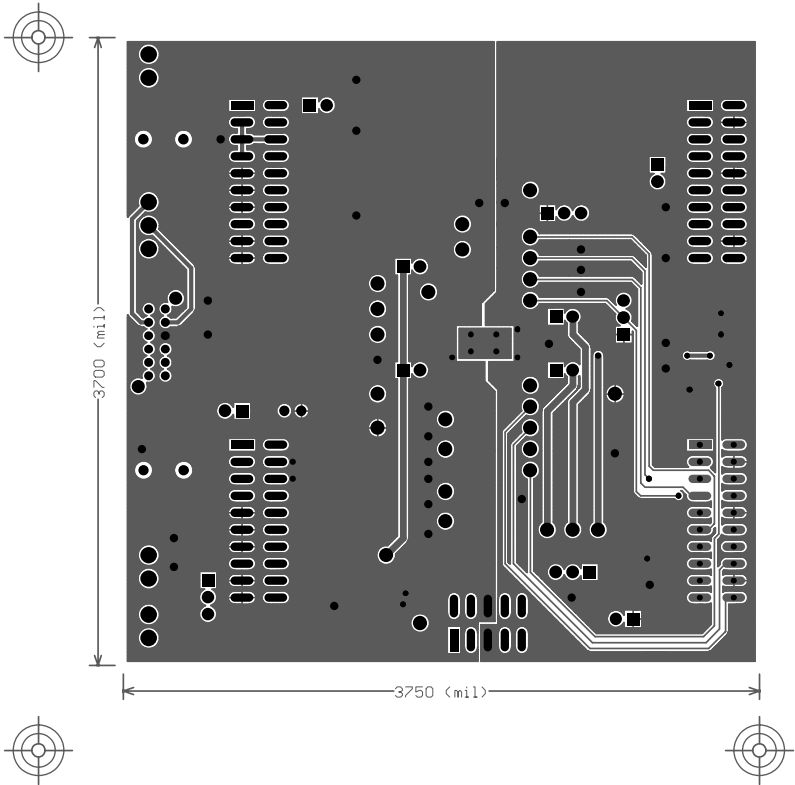


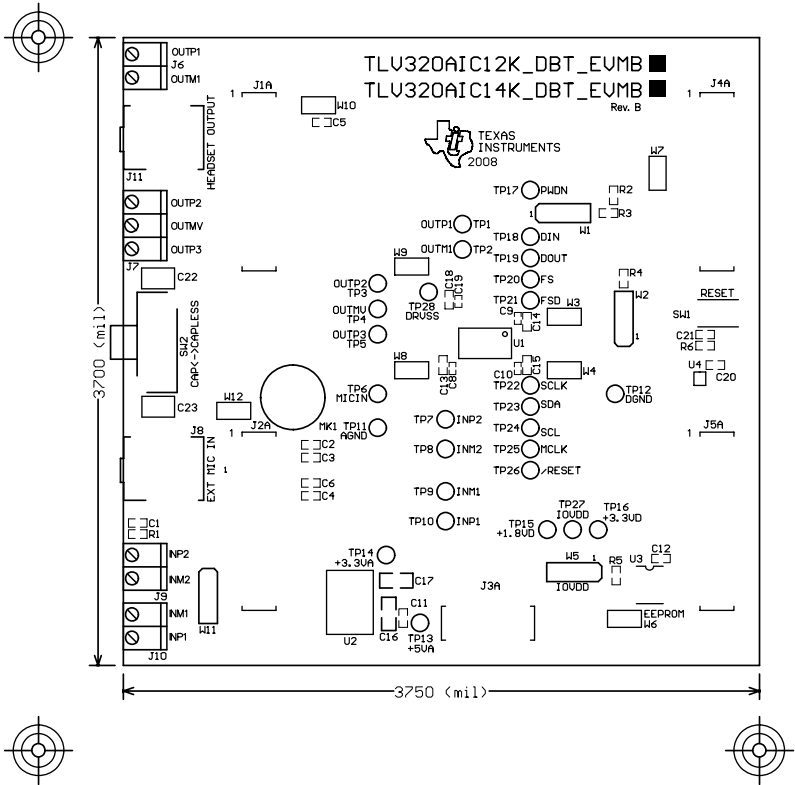
Texas Instruments, Inc. 12500 TI Boulevard, Dallas, TX 75243		
TLV320AIC12K_14K_DBT_EUMB		Drawn By: Steve Leggio
		Eng: Jorge Arbona
REV: B	SCALE: 0.89	DOCUMENT CONTROL # N/A
19-Aug-2008      Top Layer		



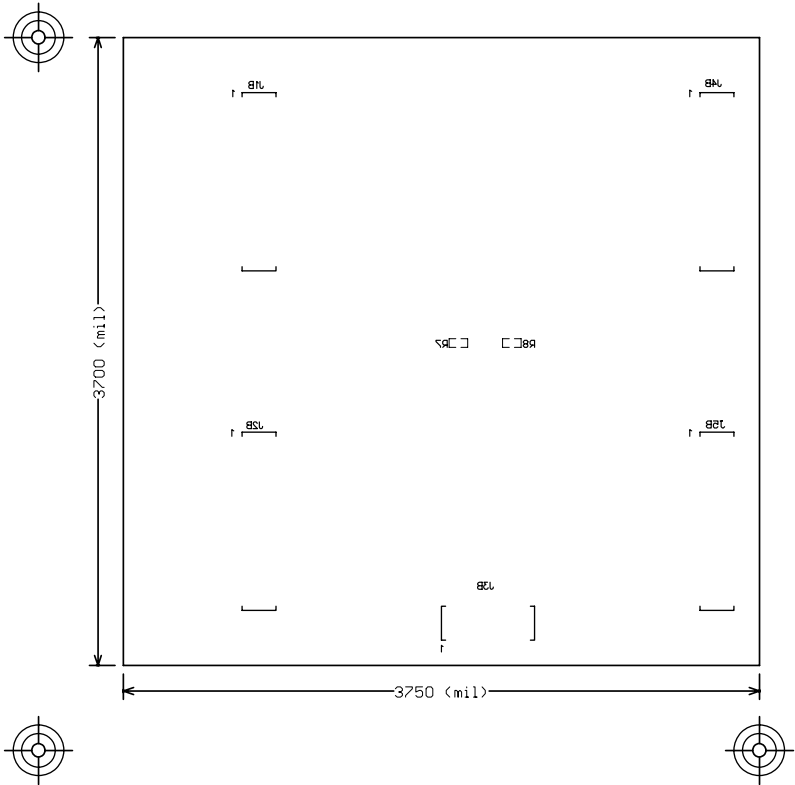
Texas Instruments, Inc. 12500 TI Boulevard, Dallas, TX 75243		
TLV320AIC12K_14K_DBT_EUMB		Drawn By: Steve Leggio
		Eng: Jorge Arbona
REV: B	SCALE: 0.89	DOCUMENT CONTROL # N/A
19-Aug-2008 Bottom Layer		



<b>Texas Instruments, Inc.</b> 12500 TI Boulevard, Dallas, TX 75243		
TLV320AIC12K_14K_DBT_EUMB		<small>Drawn By:</small> Steve Leggio <small>Eng:</small> Jorge Arbona
REV: B	SCALE: 0.89	DOCUMENT CONTROL # N/A
19-Aug-2008      Top Overlay		



Texas Instruments, Inc. 12500 TI Boulevard, Dallas, TX 75243		
TLV320AIC12K_14K_DBT_EUMB		Drawn By: Steve Leggio
		Eng: Jorge Arbona
REV: B	SCALE: 0.89	DOCUMENT CONTROL # N/A
19-Aug-2008		



Texas Instruments, Inc. 12500 TI Boulevard, Dallas, TX 75243		
TLV320AIC12K_14K_DBT_EUMB		Drawn By: Steve Leggio
		Eng: Jorge Arbona
REV: B	SCALE: 0.89	DOCUMENT CONTROL # N/A
19-Aug-2008      Drill Drawing		

Notes:

1. PWB TO BE MANUFACTURED RoHS COMPLIANT AND MARKED AS PER IPC-1066.
2. PWB TO BE FABRICATED TO MEET OR EXCEED IPC-6012, CLASS 3 STANDARDS AND WORKMANSHIP SHALL CONFORM TO IPC-A-600, CLASS 3 - CURRENT REVISIONS
3. BOARD MATERIAL AND CONSTRUCTION TO BE UL APPROVED AND MARKED ON THE FINISHED BOARD.
4. LAMINATE MATERIAL: COPPER-CLAD FR-4 HIGH Tg MATERIAL; Tg >= 175 DEGREES C, Td >= 350 DEGREES C.
5. COPPER WEIGHT: 1oz FINISHED, ALL LAYERS
6. FINISHED THICKNESS: .062 +/- .010
7. MIN PLATING THICKNESS IN THROUGH HOLES: .001"
8. BOARD FINISH: IMMERSION SILVER
9. LPI SOLDERMASK BOTH SIDES USING APPROPRIATE LAYER ARTWORK: COLOR = GREEN
10. LPI SILKSCREEN AS REQUIRED: COLOR - WHITE
11. VENDOR INFORMATION TO BE INCORPORATED ON BACK SIDE WHENEVER POSSIBLE
12. MINIMUM COPPER CONDUCTOR WIDTH IS: 8 MILS  
MINIMUM CONDUCTOR SPACING IS: 8 MILS
13. NUMBER OF FINISHED LAYERS: 2
14. BOARD DIMENSIONS: 3.75 in. X 3.7 in.

Drill Hole Sizes:

□	111	15mil	0.381mm	PTH
▽	31	28mil	0.7112mm	PTH
□	12	31.496mil	0.8mm	PTH
*	28	37mil	0.9398mm	PTH
⌘	2	39.37mil	1mm	PTH
○	28	40mil	1.016mm	PTH
◇	2	49.213mil	1.25mm	PTH
x	9	55.118mil	1.4mm	PTH
◊	4	62.992mil	1.6mm	NPTH
	227	Total		

