


**LMX2582**  
**LMK04828**  
**PAGES 6-8**

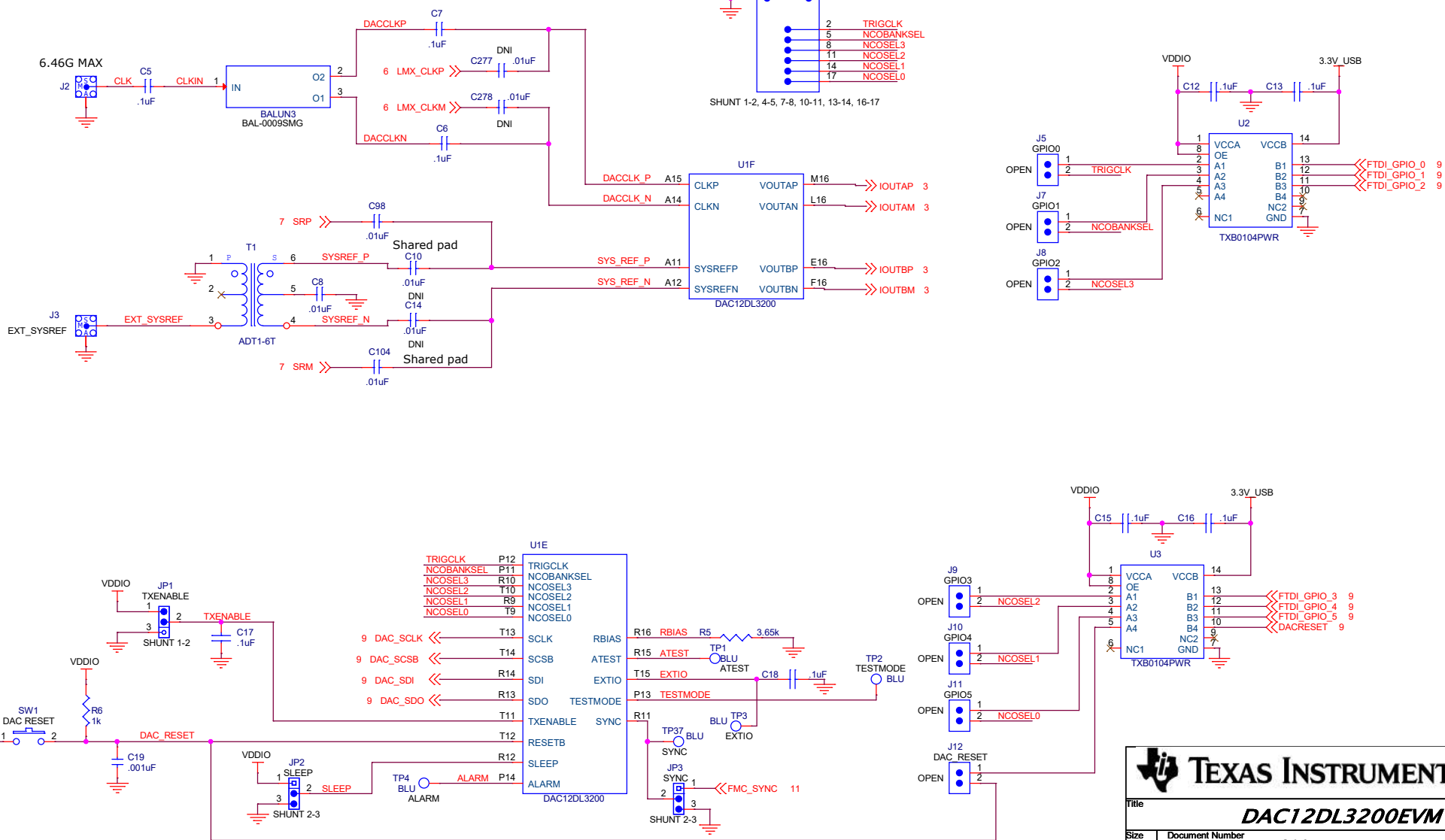
**DAC12DL3200**  
**PAGES 2-5**

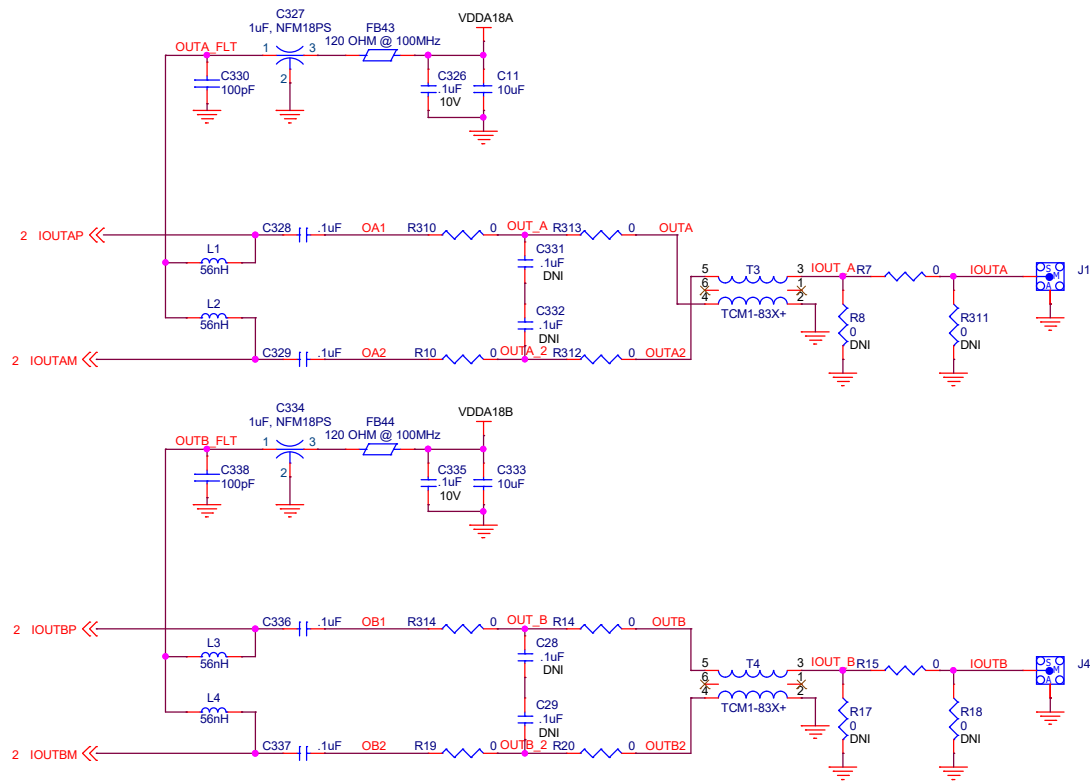
**FMC CONNECTOR**  
**PAGES 10-11**

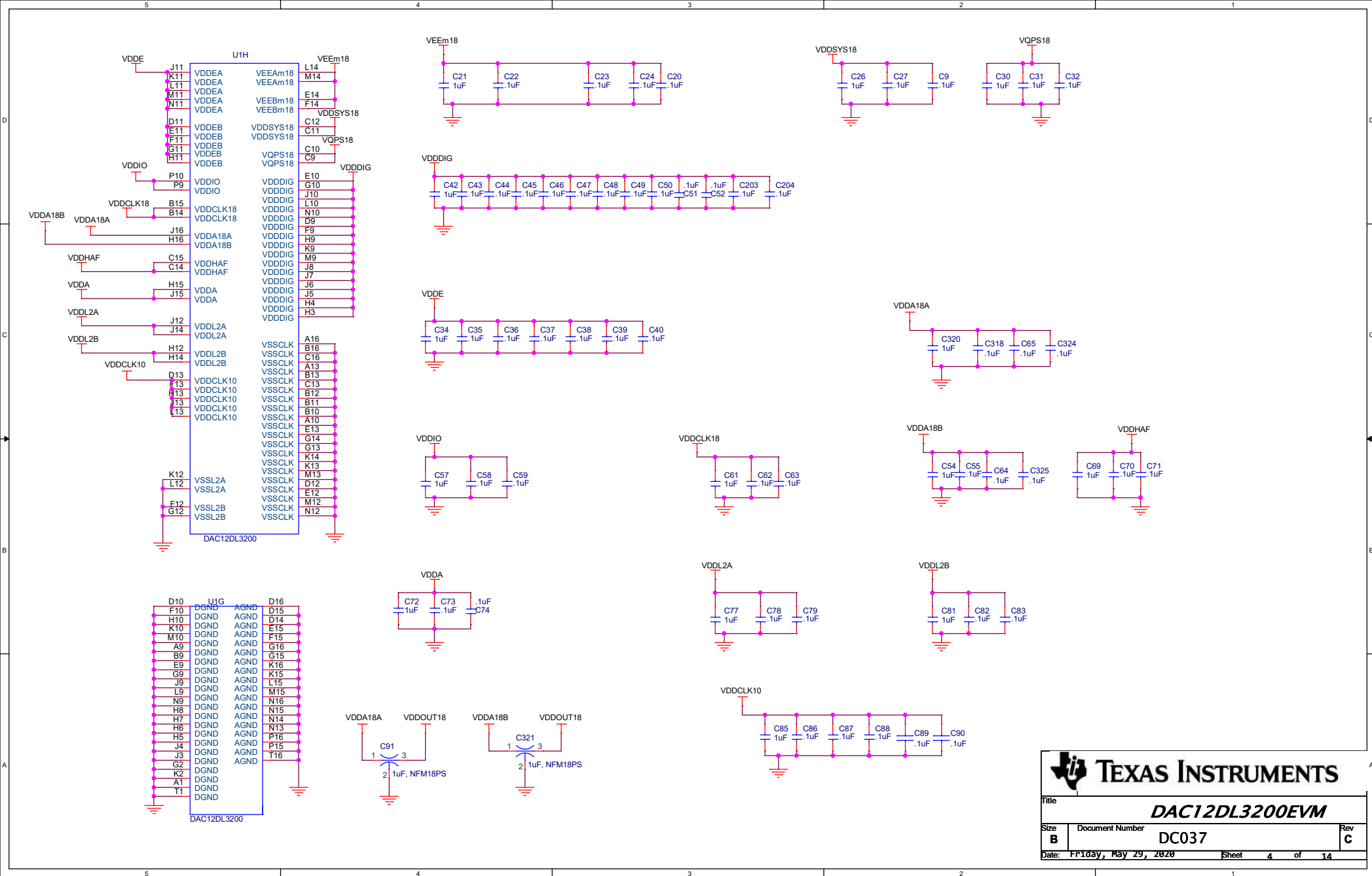
**USB PORT**  
**PAGE 9**

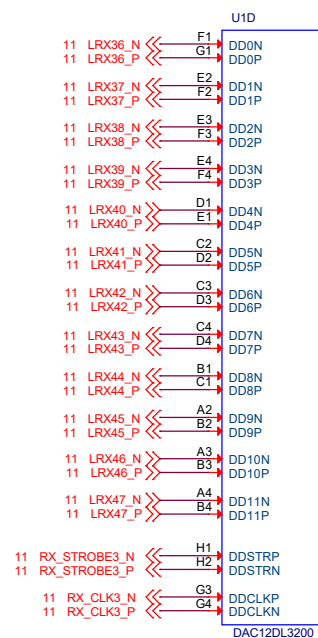
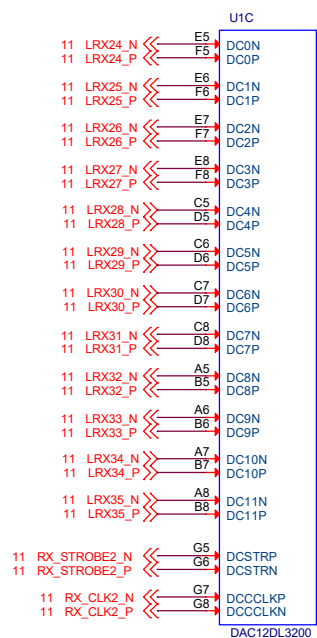
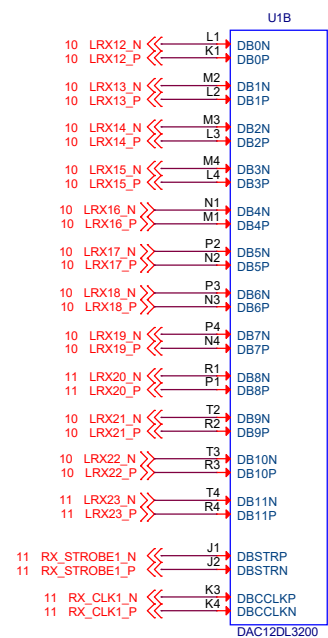
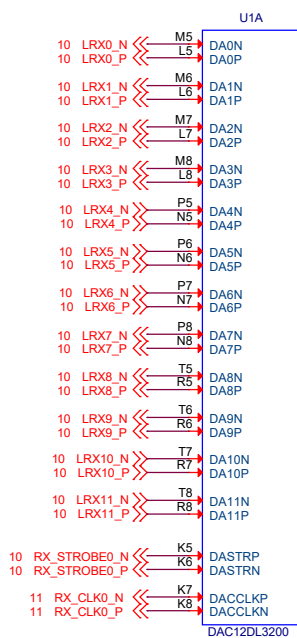
**POWER SUPPLIES**  
**PAGES 12-14**


 <b>TEXAS INSTRUMENTS</b>		
Title <b><i>DAC12DL3200EVM</i></b>		
Drawn: <b>L. NGUYEN</b> 10/2017	Size <b>B</b>	Document Number <b>DC037</b>
Engineer: <b>J. SETON</b> 10/2017	Date: <b>Friday, May 29, 2020</b>	
Sheet <b>1</b> of <b>15</b>		Rev <b>C</b>









 **TEXAS INSTRUMENTS**

Title

**DAC12DL3200EVM**

Size

Document Number

Rev

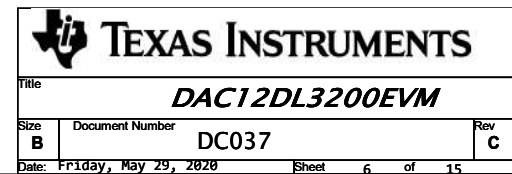
**B**

**DC037**

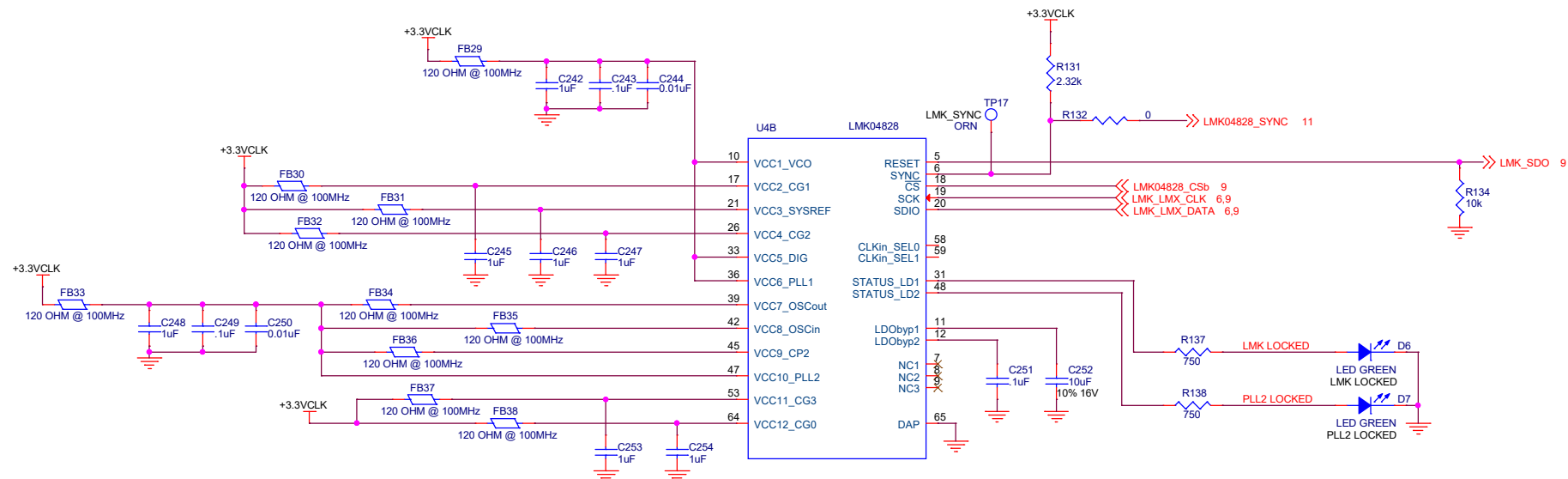
**C**

Date: Friday, May 29, 2020

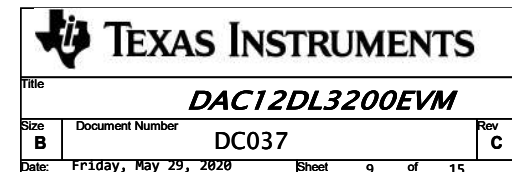
Sheet 5 of 15

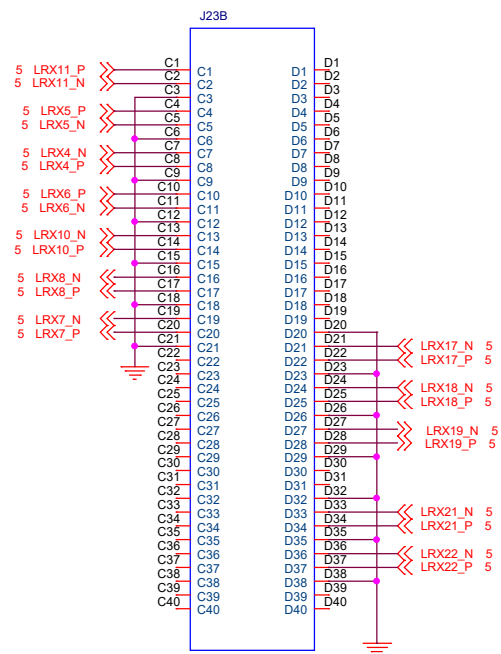
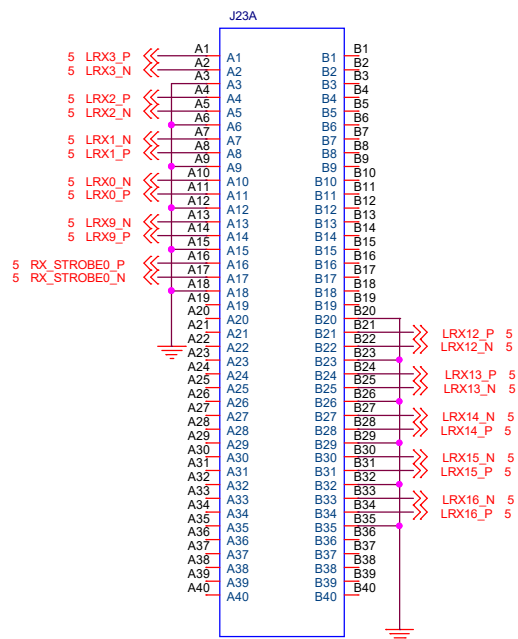















TEXAS INSTRUMENTS

Title

*DAC12DL3200EVM*

Size

B

Document Number

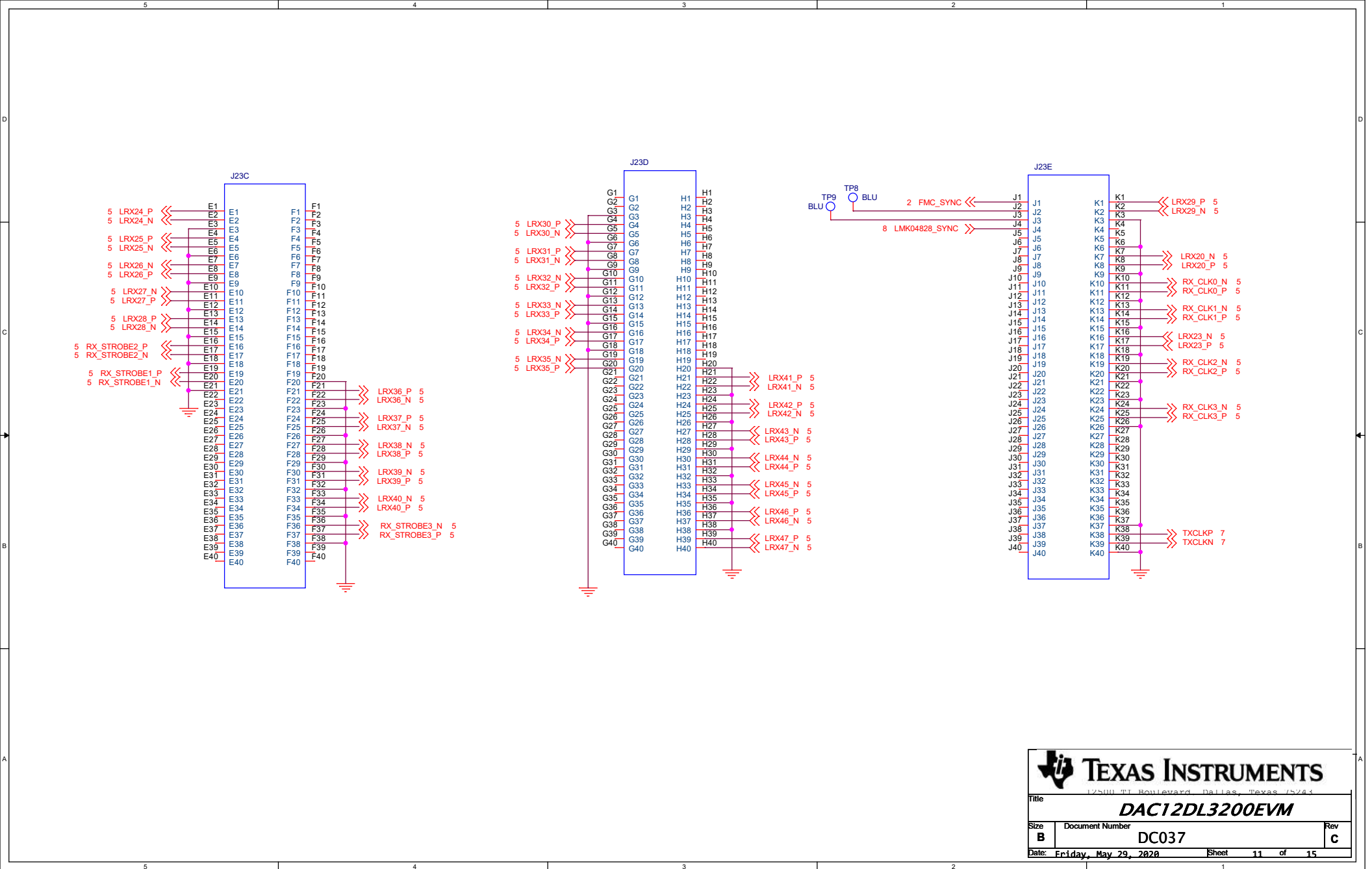
DC037

Rev

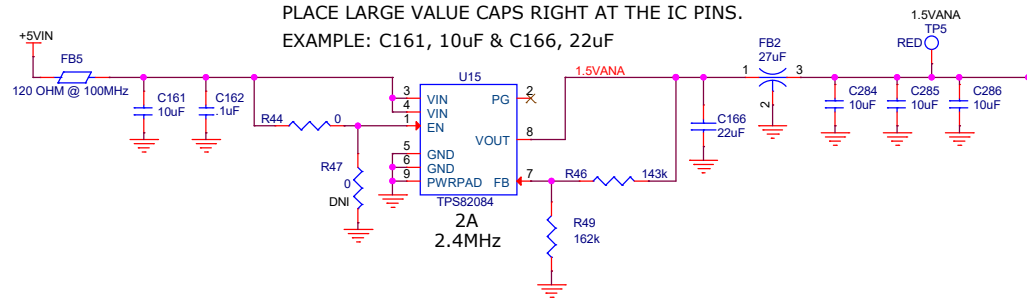
C

Date: Friday, May 29, 2020

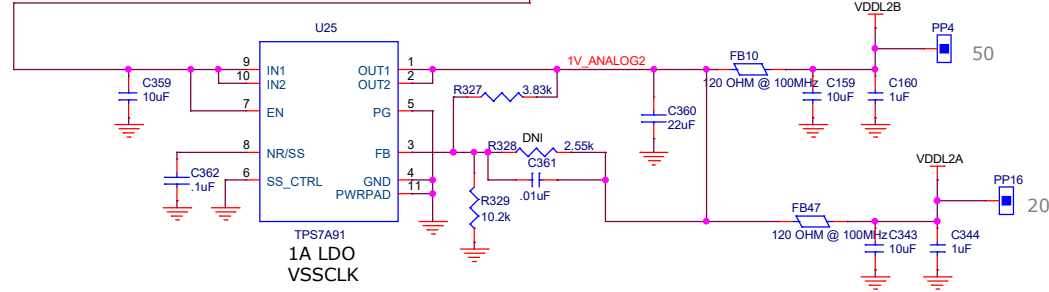
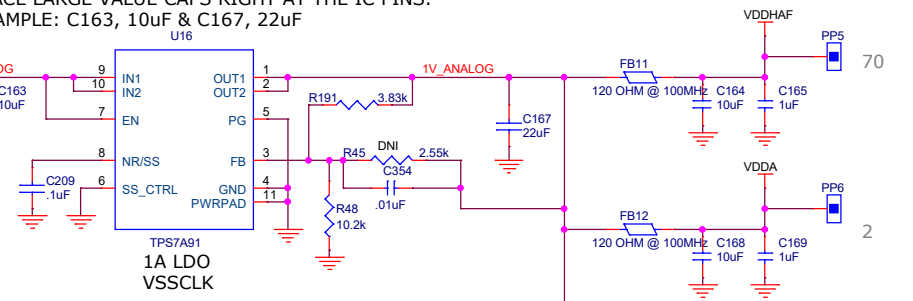
Sheet 10 of 15



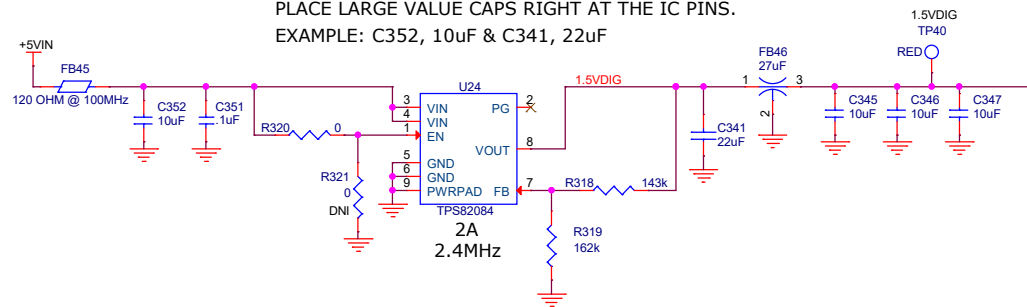
PLACE LARGE VALUE CAPS RIGHT AT THE IC PINS.  
EXAMPLE: C161, 10uF & C166, 22uF



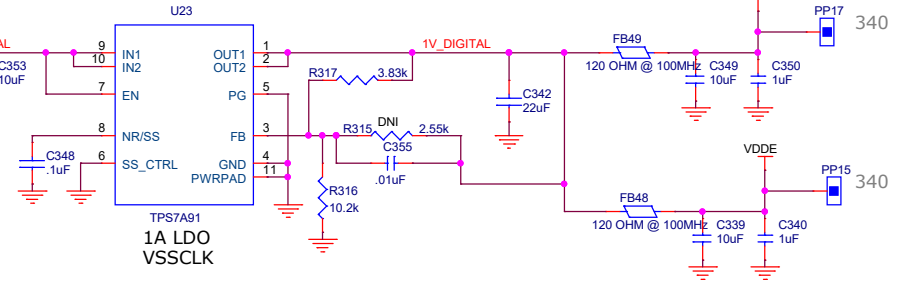
PLACE LARGE VALUE CAPS RIGHT AT THE IC PINS.  
EXAMPLE: C163, 10uF & C167, 22uF



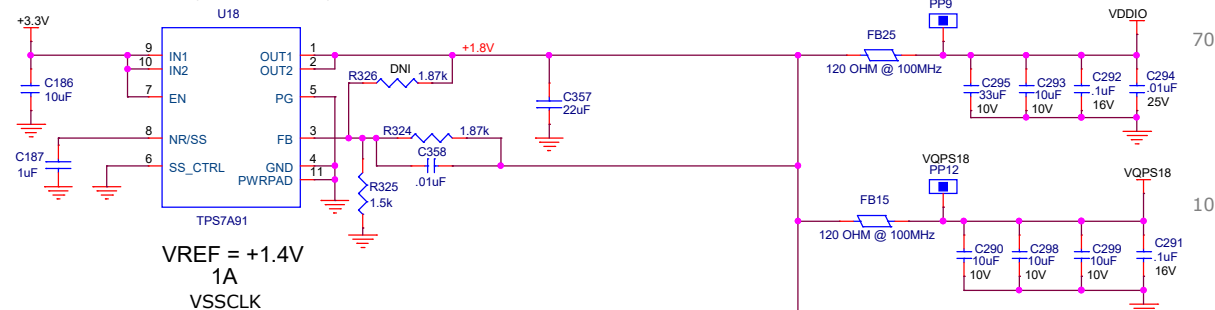
PLACE LARGE VALUE CAPS RIGHT AT THE IC PINS.  
EXAMPLE: C352, 10uF & C341, 22uF



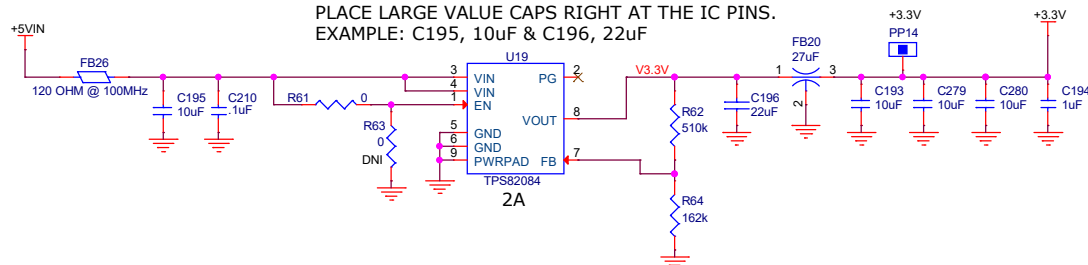
PLACE LARGE VALUE CAPS RIGHT AT THE IC PINS.  
EXAMPLE: C353, 10uF & C342, 22uF



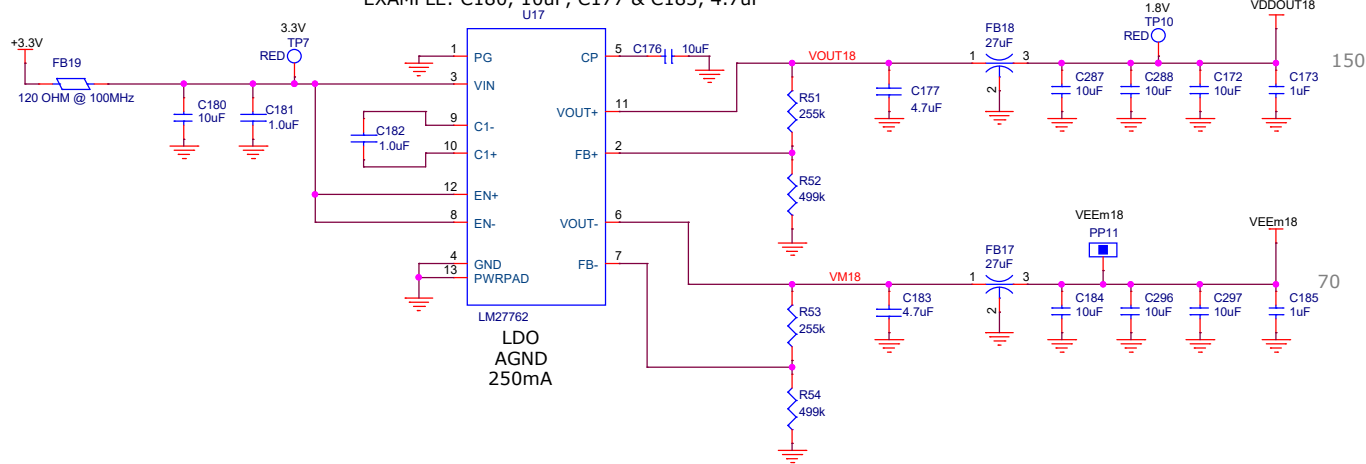
PLACE LARGE VALUE CAPS RIGHT AT THE IC PINS.  
EXAMPLE: C186, 10uF & C357, 22uF

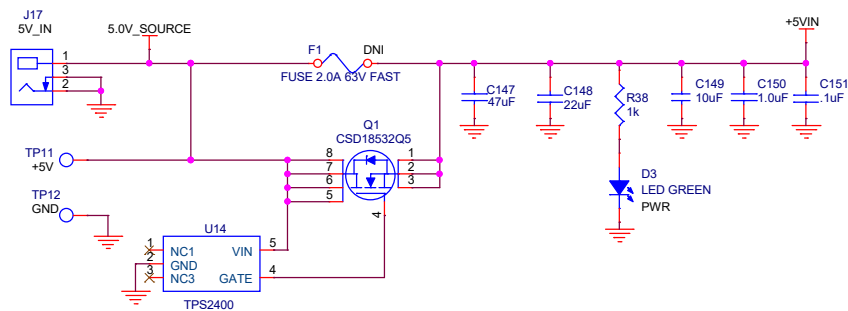


PLACE LARGE VALUE CAPS RIGHT AT THE IC PINS.  
EXAMPLE: C195, 10uF & C196, 22uF

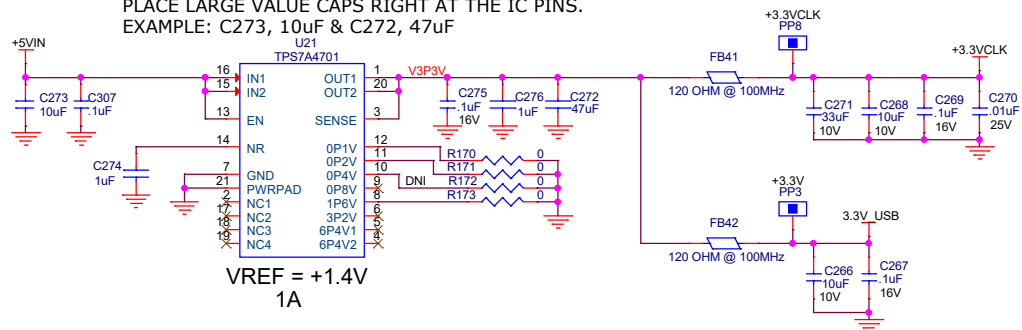


PLACE LARGE VALUE CAPS RIGHT AT THE IC PINS.  
EXAMPLE: C180, 10uF, C177 & C183, 4.7uF

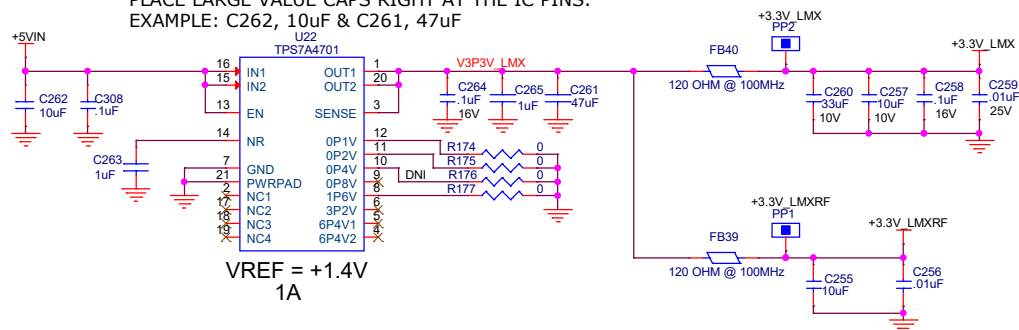




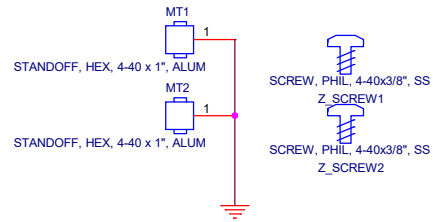
PLACE LARGE VALUE CAPS RIGHT AT THE IC PINS.  
EXAMPLE: C273, 10uF & C272, 47uF



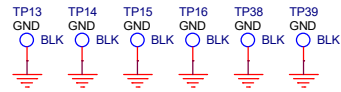
PLACE LARGE VALUE CAPS RIGHT AT THE IC PINS.  
EXAMPLE: C262, 10uF & C261, 47uF




Title		
DAC12DL3200EVM		
Size	Document Number	Rev
B	DC037	C
Date: Friday, May 29, 2020		
Sheet 14 of 15		



BARE BOARD, DAC12DL3200EVM



 <b>TEXAS INSTRUMENTS</b>		
Title <b><i>DAC12DL3200EVM</i></b>		
Size <b>B</b>	Document Number <b>DC037</b>	Rev <b>C</b>
Date: <b>Friday, May 29, 2020</b>		
Sheet <b>1</b> of <b>15</b>		